

In the 1950s the London Brick Company went to Italy to recruit workers, primarily in the regions of Puglia and Campania. By 1960 there were 3000 Italians working in Peterborough.

The Italian workers brought their families, food, festivals and language to the city and today the Italian community in Peterborough is the third largest in England.



And became the London Brick Company. Large areas of London were built using Peterborough bricks, including 10 million bricks used to construct Westminster Cathedral.

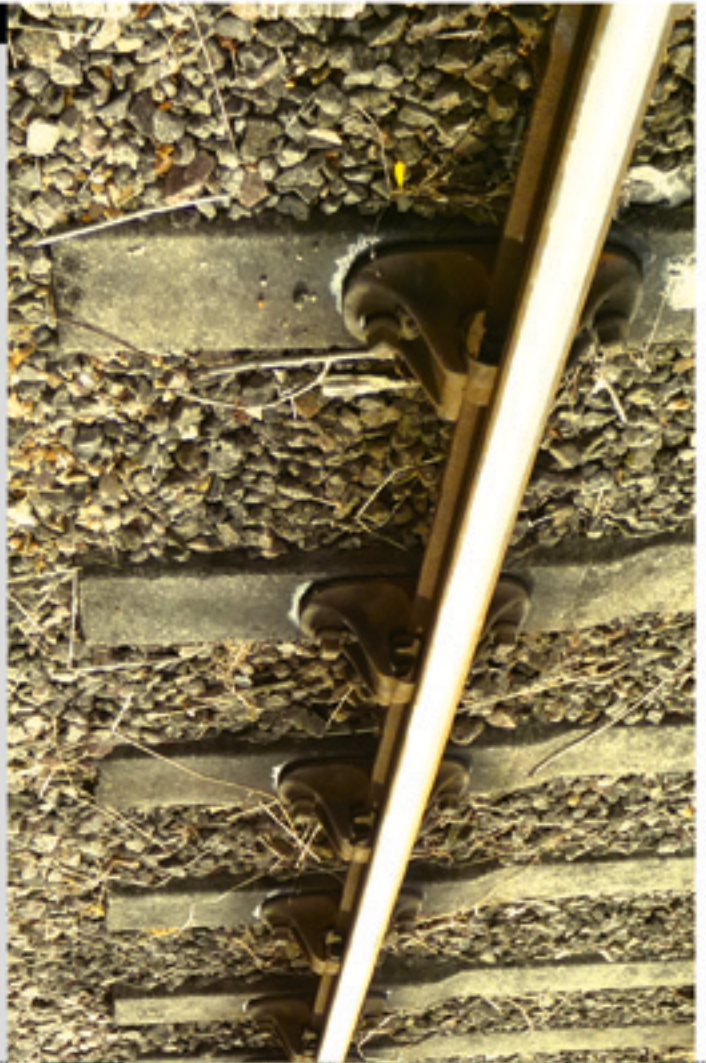


In the 1890s a means to industrialize the craft of brick-making which existed in Peterborough was found. A large area of land was auctioned off and the Fletton Brick Company was born, named after the area of Peterborough, south of the river Nene, in which it was based. The brick industry had an enormous impact on the landscape around Peterborough. The brick-making process left large pits which gradually filled with water and today are home to a huge diversity of wildlife including 63 varieties of water beetle.

## Blocks of Change



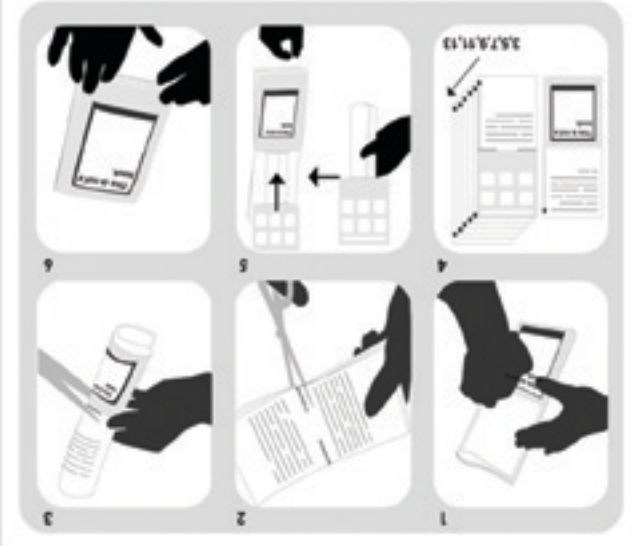
Proboscis



11



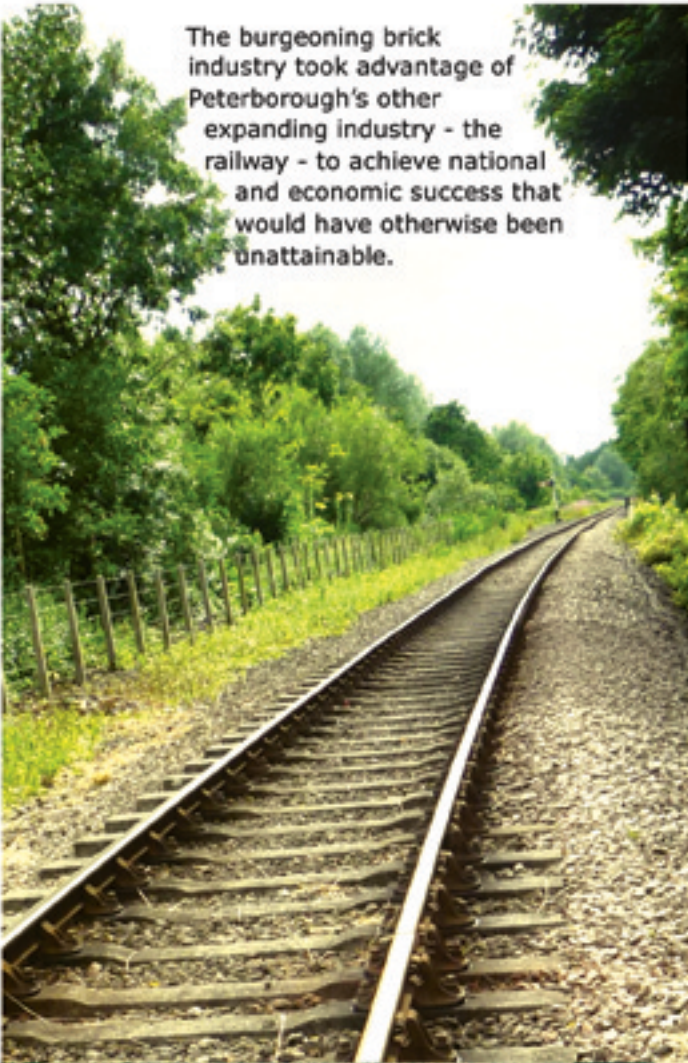
4 3



www.diffusion.org.uk  
DIFFUSION eBooks are designed to be freely available to download, print out and share.

**Blocks of Change**  
Probocks  
Created on: Mon Apr 14 14:38:38 2008

The burgeoning brick industry took advantage of Peterborough's other expanding industry - the railway - to achieve national and economic success that would have otherwise been unattainable.



In 1985, the Italian Community Association opened a social and community space in Fletton offering facilities for business and social activities for all types of Peterborough community groups. The Fleet Centre also acts as a focal point for Italian festivals and cultural activities.



The Fletton Brick Company grew.

