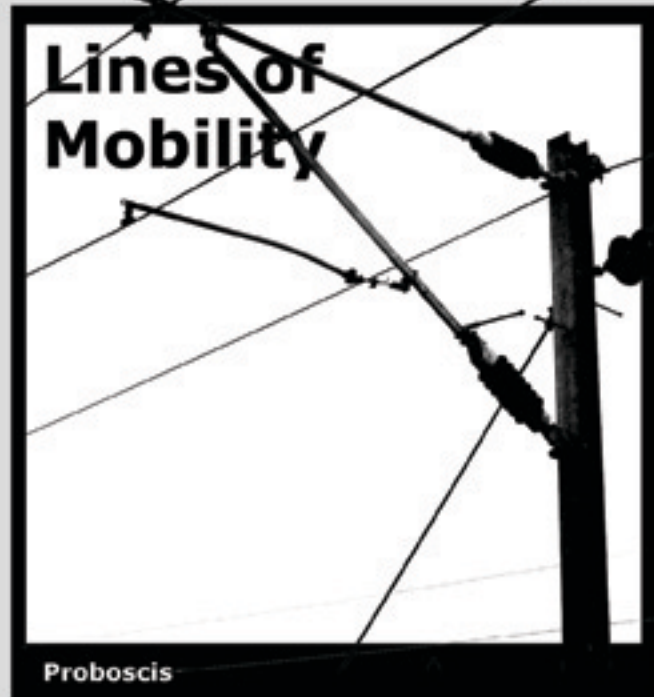
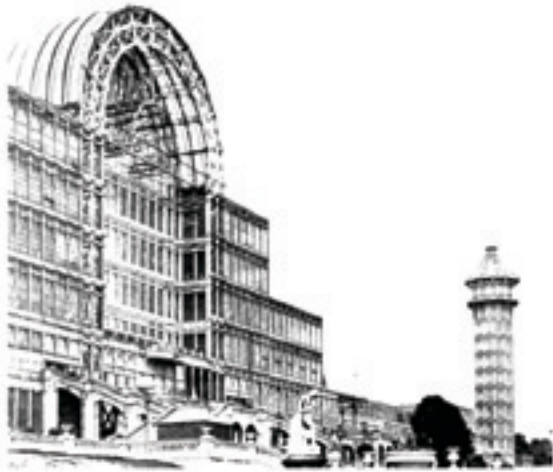
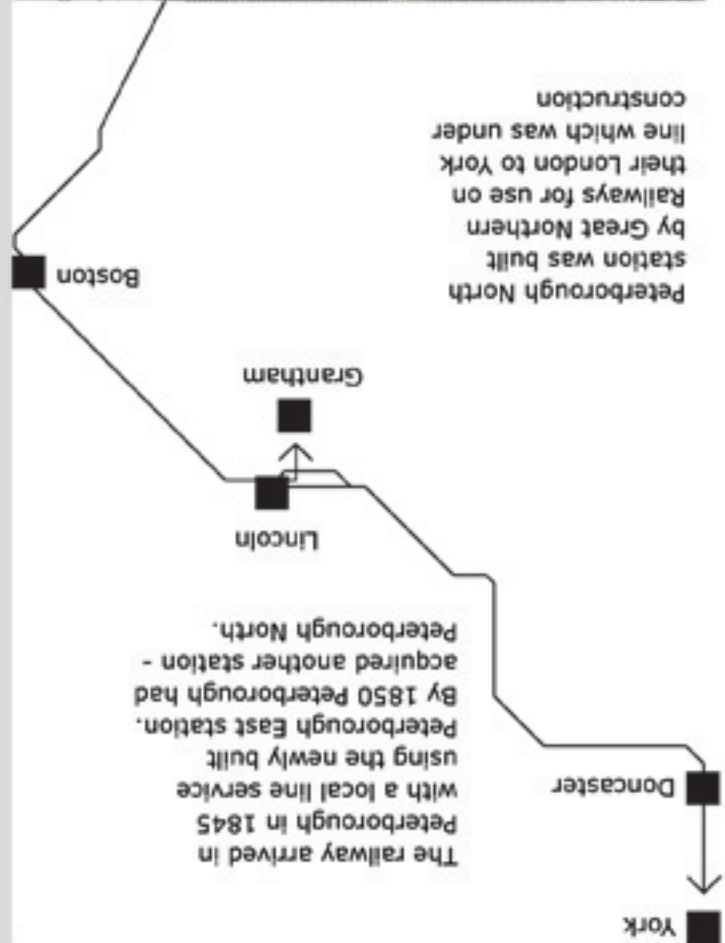
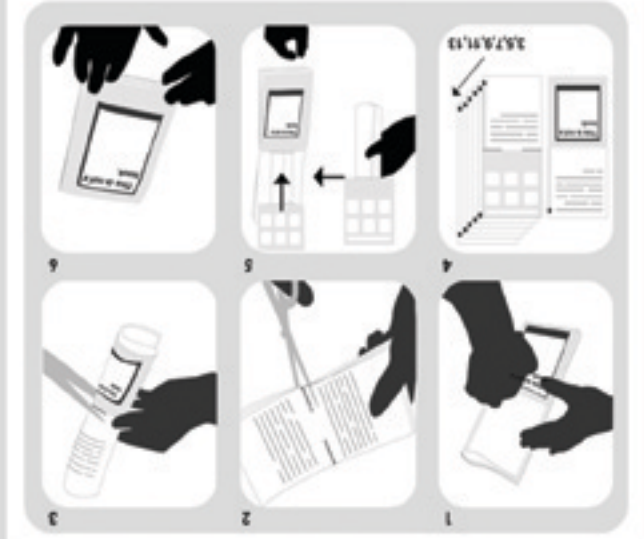


With the opening of the railway, people in Peterborough had the opportunity to travel beyond the city for business and pleasure. In 1851, just one year after the opening of the line connecting Peterborough to London, it was possible to make a day trip to see the Great Exhibition in London for just five shillings.



DIFFUSION GENERATOR





Lines of Mobility
Prodocs
 Created on: Mon Apr 14 14:38:38 2008
 www.diffusion.org.uk
 DIFFUSION ebooks are designed to be freely available to download, print out and share.

Peterborough

The opening of the London - York line transformed Peterborough from a small market town to an industrial centre.

Hitchin

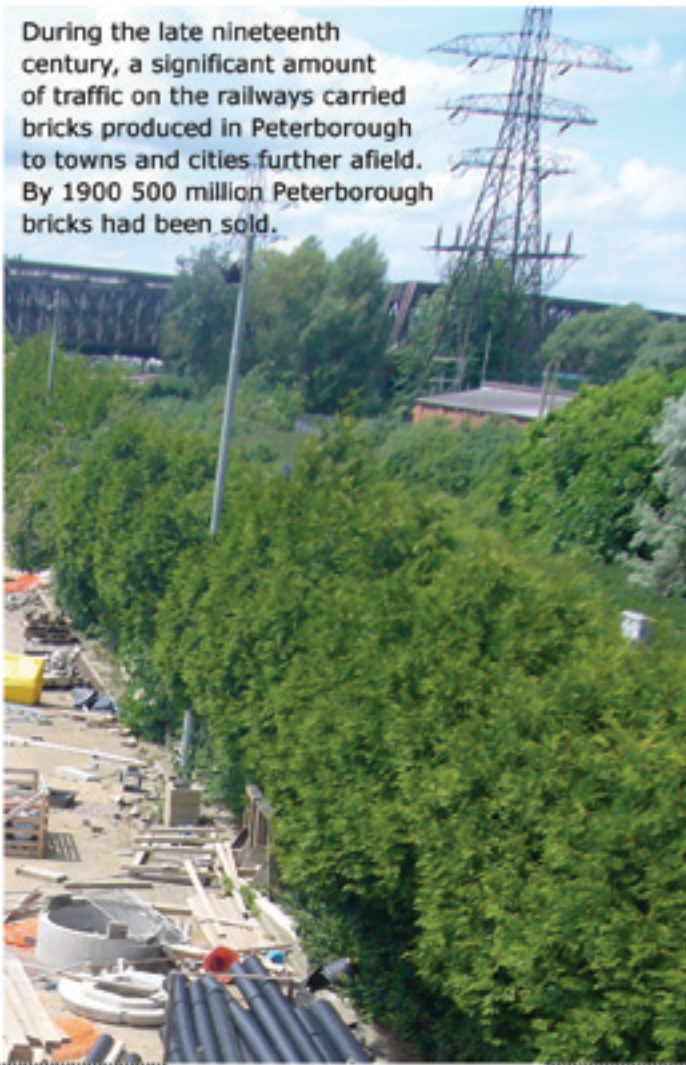
Peterborough East station closed in 1966. Last year 3.96 million passengers travelled through Peterborough North station, now known simply as Peterborough.

London

To accommodate the railway workers employed in the engine sheds and marshalling yards, Great Northern Railways built more than 250 houses and a school in an area of Peterborough known as New England.



During the late nineteenth century, a significant amount of traffic on the railways carried bricks produced in Peterborough to towns and cities further afield. By 1900 500 million Peterborough bricks had been sold.



10 6



Gradually the railway industry in Peterborough declined and fewer workers were employed. New England, the area of Peterborough built by Great Northern Railways, is now home to a new community. The Faldhan-e-Madina Mosque opened in 2003.

In 1860 a group of railway workers established the Peterborough Provincial Benefit Building Society to enable members to construct their own homes. Societies of this kind were necessary as the growth of Peterborough - in part due to the railway - meant that the town was suffering from a housing shortage. During this expansion the population of Peterborough doubled to 15,500 between 1841 and 1871. The Peterborough Provincial Benefit Building Society is today part of the Norwich and Peterborough Building Society.



5 9

