

Predation on *Stegodyphus* (Araneae: Eresidae) by *Hyllus semicupreus* (Araneae: Salticidae) in Tamil Nadu, India

Muralidharan S¹

¹ Slater nagar, Perundurai. Erode 638053 Tamilnadu, India, *email* murezhi@gmail.com

While observing a *Stegodyphus* web I witnessed a female *Hyllus semicupreus* (Simon 1885) feeding on a *Stegodyphus* sp. indet. near my home in Tamil Nadu (Figures 1-2; Perundurai, Erode District, 11°17'53.22"N, 77°33'55.24"E, 08:30 18 AUG 2022).

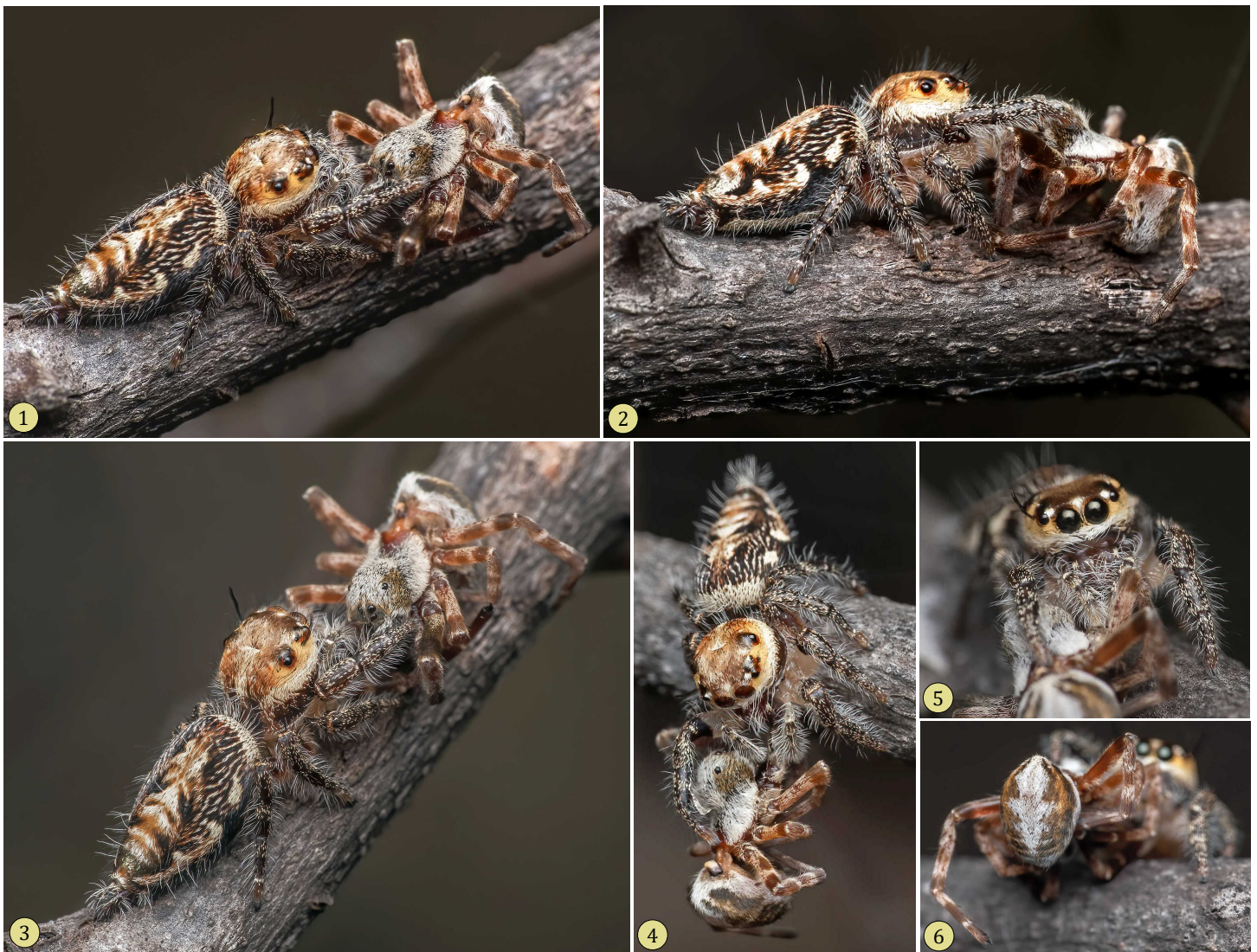


Figure 1. Female *Hyllus semicupreus* feeding on a *Stegodyphus* sp.



Figure 2. Female *Hyllus semicupreus* feeding on a *Stegodyphus* sp. (arrows). Note the relative position of the *Stegodyphus* web (at right).

The webs of these social velvet spiders extend for several meters and they usually emerge only in response to the vibration of insects trapped in the web (Wright et al. 2020). Although there are many records of predation on spiders by *Hyllus* (e.g., Gilman 2016; Sharma & Oli 2021; Khalap 2022), this record of predation on a *Stegodyphus* may be unique.

References

- Gilman, R. T. 2016.** Intraguild predation by a salticid (*Hyllus brevitarsus*) on a large orb weaver (*Nephila senegalensis*). *Peckhamia* 134.1: 1-2.
- Khalap, R. 2022.** Nonsexual cannibalism by a female *Hyllus semicupreus* (Araneae: Salticidae: Plexippina). *Peckhamia* 260.1: 1-2.
- Sharma, M. and B. R. Oli. 2021.** Araneophagy by *Hyllus semicupreus*. *Peckhamia* 244.1: 1-2.
- Wright, C. M., J. L. L. Lichtenstein, L. P. Luscuskie, G. A. Montgomery, S. Geary, J. N. Pruitt, N. Pinter-Wollman and C. N. Keiser. 2020.** Spatial proximity and prey vibratory cues influence collective hunting in social spiders. *Israel Journal of Ecology and Evolution* 66 (1-2): 26-31.