

# A Caribbean in the South Atlantic: first records of *Hentzia antillana* Bryant 1940, with notes on other previously reported jumping spider species (Araneae: Salticidae), from Ascension Island

Danniella Sherwood<sup>1,2,3,5</sup> and Adam Sharp<sup>3,4</sup>

<sup>1</sup> Arachnology Research Association, London, UK

<sup>2</sup> Fundación Ariguanabo, San Antonio de los Baños, Cuba

<sup>3</sup> IUCN Species Survival Commission, Mid-Atlantic Islands Invertebrate Specialist Group, Sailsbury, UK

<sup>4</sup> Conservation & Fisheries Directorate, Ascension Island Government, Georgetown, Ascension Island

<sup>5</sup> Corresponding author; *email* danni.sherwood@hotmail.com

**Abstract.** The salticid fauna of Ascension Island is discussed. Additional records of the previously recorded *Hasarius adansoni* (Audouin 1826), *Menemerus bivittatus* (Dufour 1831) and *Plexippus paykulli* (Audouin 1826) are presented and the first records of *Hentzia antillana* Bryant 1940 are made, based on specimens of both sexes. We also discuss the possible identity of '*Dendryphantes* sp.' recorded by Dahl (1892) and not found again since its first report.

**Keywords.** distribution, faunistic, non-native, salticid

## Introduction

Ascension Island is one of the most remote inhabited islands in the world, part of the United Kingdom Overseas Territory (UKOT) of Saint Helena, Ascension and Tristan da Cunha. The spider fauna of Ascension is made up almost exclusively of non-native species (Berland 1926; Ashmole & Ashmole 1997, 2000) and most 'endemic' species have turned out to be synonyms of widespread non-native taxa (WSC 2023). Four species of the family Salticidae have been hitherto recorded: '*Dendryphantes* sp.', *Hasarius adansoni* (Audouin 1826), *Menemerus bivittatus* (Dufour 1831), and *Plexippus paykulli* (Audouin 1826) (Dahl 1892; Berland 1926; Duffey 1964; Ashmole & Ashmole 1997, 2000).

Recent samples of spiders collected by Adam Sharp and others on Ascension Island, sent to the senior author for identification, contained specimens of a species of the genus *Hentzia* Marx 1883, hitherto known only from the Caribbean region (northern South America to Southeastern United States; WSC 2023). In this work, we report *Hentzia antillana* Bryant 1940 from the South Atlantic for the first time and provide complimentary photographs of both sexes. We also discuss other species previously recorded from Ascension Island by earlier workers.

## Material and methods

Specimens were examined under a binocular stereomicroscope. Images were made by the senior author using a Canon EOS 6D Mark II attached to a Leica MZ12.5 stereomicroscope, with images stacked using Helicon Focus software. Abbreviations: ASC = Ascension Island Conservation collection, Georgetown, Ascension Island (it is intended in the future that the ASC invertebrate collection will be donated and

moved to the Saint Helena National Trust, Jamestown, Saint Helena); BMNH = Natural History Museum, London, United Kingdom; coll. = collector; colln. = collection ; det. = determined by; MMUE = Manchester Museum, Manchester, United Kingdom. Salticids were commonly found mixed in tubes with other spiders particularly in the Duffey collection. However, since the species on Ascension are synanthropic and widespread this is not surprising, and we feel no need to list other spider families found in these samples in the present work as they are likely to be coincidental and not particular associations and are thus outside of its scope. In cases where two salticid species were found in one sample, the specimens of each species can be found with the same accession number under the respective species section.

### Ascension faunistic records

#### *Hasarius adansonii* (Audouin 1826)

*Attus adansonii* Audouin 1826: 404, pl. 7, f. 8 (♂♀).

For full taxonomic synonymy list, see WSC 2023.

**Material examined.** 1 ♀ (ASC K19 1 HC), Ascension Island, -7.967324, -14.330846, 246 m, 11/01/2022, coll. A. Sharp; 1 ♀ (ASC I18 3 HPF), Ascension Island, -7.956676, -14.349571, 614 m, 20/01/2022, coll. A. Sharp; 2 ♀♀ (ASC H14 2 PFM), Ascension Island, -7.923031, -14.363801, 208 m, 27/01/2022, coll. A. Sharp; 1 ♀ (ASC I17 2 PFM), Ascension Island, -7.949012, -14.354728, 540 m, 28/01/2022, coll. A. Sharp; 1 ♂ (ASC 01394), Ascension Island, -7.948188528, -14.31186706, 04/04/13, coll. L. F. White; 1 ♀ (ASC 01277), Ascension Island, -7.912300761, -14.40160336, 14/03/13, coll. L. F. White; 1 ♀ (ASC 01557), Ascension Island, -7.948188528, -14.31186706, 02/05/13, coll. L. F. White; 1 ♀ (ASC 01716), Ascension Island, -7.948188528, -14.31186706, 29/05/13, coll. L. F. White; 1 ♀ (ASC 01237), Ascension Island, -7.948188528, -14.31186706, 08/03/13, coll. L. F. White; 1 ♀, 1 imm. (ASC H14 2 PFF), Ascension Island, -7.923031, -14.363801, 208 m, 27/01/2022, coll. A. Sharp; 1 imm. (ASC K14 1 PFM), Ascension Island, -7.917393, -14.333651, 36 m, 03/02/2022, coll. A. Sharp; 1 imm. ♂ (ASC I17 3 HC), Ascension Island, -7.950638, -14.35274, 659 m, 25/01/2022, coll. A. Sharp; 1 imm. (ASC K14 2 PFJ), Ascension Island, -7.917888, -14.329306, 9 m, 03/02/2022, coll. A. Sharp; 1 imm. ♂ (ASC I18 2 VB), Ascension Island, -7.960243, -14.348867, 463 m, 14/01/2022, coll. A. Sharp; 2 imm. ♂ (ASC I18 1 PFF), Ascension Island, -7.957993, -14.350751, 507 m, 17/01/2022, coll. A. Sharp; 1 ♀, 2 imm. (ASC K19 2 HC), Ascension Island, -7.961744, -14.334000, 392 m, 14/01/2022, coll. A. Sharp; 1 imm. ♀ (ASC I18 2 PFJ), Ascension Island, -7.960243, -14.348867, 463 m, 17/01/2022, coll. A. Sharp; 1 ♀ (ASC I18 3 PFF), Ascension Island, -7.956676, -14.349571, 614 m, 20/01/2022, coll. A. Sharp; 1 imm. (ASC B15 2 PFM), Ascension Island, -7.927149, -14.414751, 15 m, 04/02/2022, coll. A. Sharp; 1 imm. (ASC I17 3 SN), Ascension Island, -7.950638, -14.35274, 659 m, 25/01/2022, coll. A. Sharp; 1 ♀ (ASC I17 2 HC), Ascension Island, -7.949012, -14.354728, 540 m, 25/01/2022, coll. A. Sharp; 1 imm. (ASC I17 2 HPJ), Ascension Island, -7.949012, -14.354728, 540 m, 28/01/2022, coll. A. Sharp; 1 imm. (ASC I17 3 PFF), Ascension Island, -7.950638, -14.35274, 659 m, 28/01/2022, coll. A. Sharp; 1 imm. (ASC L16 2 HC), Ascension Island, -7.93578, -14.324432, 483 m, 21/02/2022, coll. A. Sharp; 1 ♀ (ASC I17 1 PFM), Ascension Island, -7.945128, -14.351484, 536 m, 28/01/2022, coll. A. Sharp; 1 imm. (ASC E19 1 PFM), Ascension Island, -7.963792, -14.388453, 118 m, 18/02/2022, coll. A. Sharp; 1 ♂, 1 ♀ (ASC I17 2 PFU), Ascension Island, -7.949012, -14.354728, 540 m, 28/01/2022, coll. A. Sharp; 1 ♀ (ASC I17 2 SN), Ascension Island, -7.949012, -14.354728, 540 m, 25/01/2022, coll. A. Sharp; 1 imm. ♂ (ASC I17 1 PFF), Ascension Island, -7.945128, -14.351484, 536 m, 28/01/2022, coll. A. Sharp; 1 ♀ (ASC L16 1 PFV), Ascension Island, -7.938235, -14.327193, 472 m, 24/02/2022, coll. A. Sharp; 1 ♀ (ASC L16 1 SN), Ascension Island, -7.938235, -14.327193, 472 m, 21/02/2022, coll. A. Sharp; 1 ♂ (ASC K14 1 PFF), Ascension Island, -7.917393, -14.333651, 36 m, 03/02/2022, coll. A. Sharp; 1 ♀ (ASC J15 1 HPF), Ascension Island, -7.927534, -14.343771, 137 m, 24/01/2022, coll. A. Sharp; 1 ♀ (ASC E12 3 PFF), Ascension Island, -7.903365, -14.387783, 35 m, 17/02/2022, coll. A. Sharp; 1 ♀ (ASC H20 2 PFF), Ascension Island, -7.974894, -14.359704, 178 m, 04/03/2022, coll. A. Sharp; 1 imm. (ASC F17 1 HC), Ascension Island, -7.949646, -14.381901, 164 m, 28/02/2022, coll. A. Sharp; 1 ♀ (ASC L16 1 PFM), Ascension Island, -7.938235, -14.327193, 472 m, 24/02/2022, coll. A. Sharp; 1 imm. (ASC H12 1 PFJ), Ascension Island, -7.903623, -14.358961, 20 m, 10/03/2022, coll. A. Sharp; 1 imm. (ASC H20 3 PFM), Ascension Island, -7.975506, -14.363417, 161 m, 04/03/2022, coll. A. Sharp; 1 ♀ (ASC M17 3 HC), Ascension Island, -7.945941, -14.316707, 511 m, 22/02/2022, coll. A. Sharp; 1 ♀ (ASC G16 2 PFJ), Ascension Island, -7.939099, -14.365941, 315 m, 11/03/2022, coll. A. Sharp; 1 ♀ (ASC CTLB I2), Long Beach 2023, coll. A. Sharp; 1 ♂, 1 ♀, 3 imm. (ASC LBOX FLAT OPP1), Ascension Island, 14.299, -7.946, 23/09/2022, coll. A. Sharp; 3 imm. (ASC WR EPS NAT), Ascension Island, -7.95208, -14.34007, 758 m, 25/04/2023, coll. A. Sharp; 1 ♀ (ASC ITMB 5008), Mars Bay, 500m inland, 2023, coll. A. Sharp; 1 imm. (ASC CTLB I1), Long Beach 2023, coll. A. Sharp; 1 ♂ (ASC ITNE 500B), Northeast Bay, 500m inland, 2023, coll. A. Sharp; 1 imm. (ASC CTLB I1), Ascension Island, -7.948188528, -14.31186706, 1 m, 18/10/2012, coll. L. F. White; 1 ♂ (ASC ITNE 500B), Northeast Bay, 500m inland, 2023, coll. A. Sharp; 1 imm. ♂, 1 ♀, 1 imm. (ASC 0260), South Gannet Pools, search, 24/03/1990, coll. and colln. P. Ashmole and M. Ashmole; 2 ♀♀ (ASC 0727), Packers Hole Lava, search, 28/03/1990, coll. and colln. P. Ashmole and M. Ashmole; 1 ♀, 1 imm.

(ASC 0596), South Gannet Flow, upper, 23–27/03/1990, coll. and colln. P. Ashmole and M. Ashmole; 1 ♀ (ASC 0477), Porpoise Point Lava, 30/03–02/04/1990, coll. and colln. P. Ashmole and M. Ashmole; 2 ♀♀ (ASC 0721), Letterbox B, search, 22/03/1990, coll. and colln. P. Ashmole and M. Ashmole, 766213; 1 ♂, 1 imm. (ASC 0740), Letterbox, 18–22/03/1990, coll. and colln. P. Ashmole and M. Ashmole; 4 imm. (ASC 0265), Packers Hill Lava, 17–21/03/1990, coll. and colln. P. Ashmole and M. Ashmole; 1 imm. (ASC 0274), Command Hill Lava, search, 02/04/1990, coll. and colln. P. Ashmole and M. Ashmole; 5 ♀♀, 3 imm. (ASC 0708), South Gannet Pools, 20–24/03/1990, coll. and colln. P. Ashmole and M. Ashmole; 1 ♀ (ASC 0825), South Gannet, Flow Off, 23–27/03/1990, coll. and colln. P. Ashmole and M. Ashmole; 1 imm. ♀ (ASC 0603), Command Hill Cave, 21/05/1995, coll. and colln. P. Ashmole and M. Ashmole; 1 ♀ (ASC 1138), South Gannet Hill craters, near *Euphorbia*, 17/05/1995, coll. and colln. P. Ashmole and M. Ashmole; 1 imm. (ASC 1173), Boatswain Bird Island, 26–27/05/1995, coll. and colln. P. Ashmole and M. Ashmole; 1 imm. (ASC 1149), South Gannet Hill, off *Euphorbia*, 25/05/1995, coll. and colln. P. Ashmole and M. Ashmole; 1 ♀, 1 imm. (ASC ACN-1M), Ascension Island [no other data]; 1 imm. (ASC, no number), Mars Bay, 16/06/2019, no collector stated; 1 imm. (ASC 00188), Ascension Island, -7.978102948, -14.3947483, 01/06/12, coll. L. F. White; 1 ♀ (ASC NW450), Ascension Island, -7.922906985, -14.3392617, 25/04/13, coll. L. F. White; 1 imm. ♂ (ASC H20 1 HC), Ascension Island, -7.932288, -14.412699, 28 m, 04/02/2022, coll. A. Sharp; 1 imm. (ASC 01163), Ascension Island, -7.912300761, -14.40160336, 14/02/13, coll. L. F. White; 1 imm. (ASC 00124), Ascension Island, -7.938235, -14.327193, 472 m, 24/02/2022, coll. A. Sharp; 1 imm. (ASC 00050), Ascension Island, -7.978102948, -14.3947483, 21/05/12, coll. L. F. White; 1 imm. (ASC 00167), Ascension Island, -7.978102948, -14.3947483, 29/05/12, coll. L. F. White; 1 ♀, 6 imm. (BMNH), Boatswain Bird Island, Ascension Island, 12–31/09/1957, coll. E. A. Duffey, tube 62; 1 ♂ (BMNH), Ascension Island, 12–31/09/1957, coll. E. A. Duffey, tube 49; 2 ♂ (BMNH), [same data, except tube 44]; 3 ♀♀, 1 imm. (BMNH), [same data, except tube 76]; 3 imm. ♀ (BMNH), [same data, except tube 70]; 1 imm. (BMNH), [same data, except tube 72]; 1 ♀ (BMNH), [same data, except tube 92]; 3 ♀♀ (BMNH), [same data, except tube 86]; 1 ♂ (BMNH), [same data, except tube 2]; 1 ♀ (BMNH), [same data, except tube Bou 33]; 1 imm. ♀ (BMNH), [same data, except tube 53]; 1 ♀ (BMNH), [same data, except tube 3008/2]; 1 imm. (BMNH), [same data, except tube 133]; 1 imm. (BMNH), [same data, except tube 57]; 1 ♀ (BMNH), [same data, except tube 120]; 1 ♂ (BMNH), [same data, except tube 94]; 1 imm ♀, 5 imm. (BMNH), [same data, except tube 99]; 1 ♂ (BMNH), [same data, except tube 10]; 1 ♀ (BMNH), [same data, except tube 48]; 2 ♂♂, 1 ♀, 3 imm. ♀, 2 imm. (BMNH), [same data, except tube 102]; 1 imm. ♂ (BMNH), [same data, except tube 293]; 1 ♂ (BMNH), [same data, except tube 60]; 1 ♂ (BMNH), [same data, except tube 9]; 1 ♂ (BMNH), [same data, except tube 2005]; 1 ♀ (BMNH), [same data, except tube Bou 45]; 2 imm. (BMNH), [same data, except tube 73]; 2 ♂♂, 1 ♀, 1 imm. (BMNH), [same data, except tube 106]; 1 imm. ♀ (BMNH), [same data, except tube 3008/1]; 1 imm. (BMNH), [same data, except tube 36]; 1 imm. ♂, (BMNH), [same data, except tube 18]; 3 imm. (BMNH), [same data, except tube 96]; 1 ♂, 1 imm. (BMNH), [same data, except tube 125]; 1 ♀ (BMNH), [same data, except tube 37]; 1 ♂, 1 ♀, 1 imm. (BMNH), [same data, except tube 25]; 2 ♂♂, 1 imm. ♂, 1 ♀ (BMNH), [same data, except tube 129]; 1 ♂ (BMNH), [same data, except tube 4]; 1 imm. ♂, 1 ♀ (BMNH), [same data, except tube 87]; 2 ♀♀, 2 imm. (BMNH), [same data, except tube 34]; 1 ♀ (BMNH), [same data, except tube 16]; 1 ♀ (BMNH), [same data, except tube 45]; 2 ♂♂, 2 ♀♀ (MMUE G7572.13359), Ascension Island, Lava, 03/1990, coll. P. Ashmole, 21819, J. A. Murphy and F. M. Murphy colln.

**Distribution.** Described by Audouin (1826) from Egypt, probably indigenous to the Middle East and Northern Africa. Introduced worldwide in the Americas, Europe and parts of South Asia, Southeast Asia, and Oceania (WSC 2023).

**Remarks.** A very common synanthropic species found throughout all habitat types. Duffey (1964: 242) reported *H. adansoni* as common in the arid areas of the main island, and it was found on Boatswain Bird Island by Ashmole & Ashmole (1997). This distribution is also in keeping with more recently collected specimens.

### ***Hentzia antillana* Bryant, 1940**

(Figures 1-2)

*Hentzia antillana* Bryant 1940: 494, pl. 22, figs. 285, 289, 294 (♂♀).

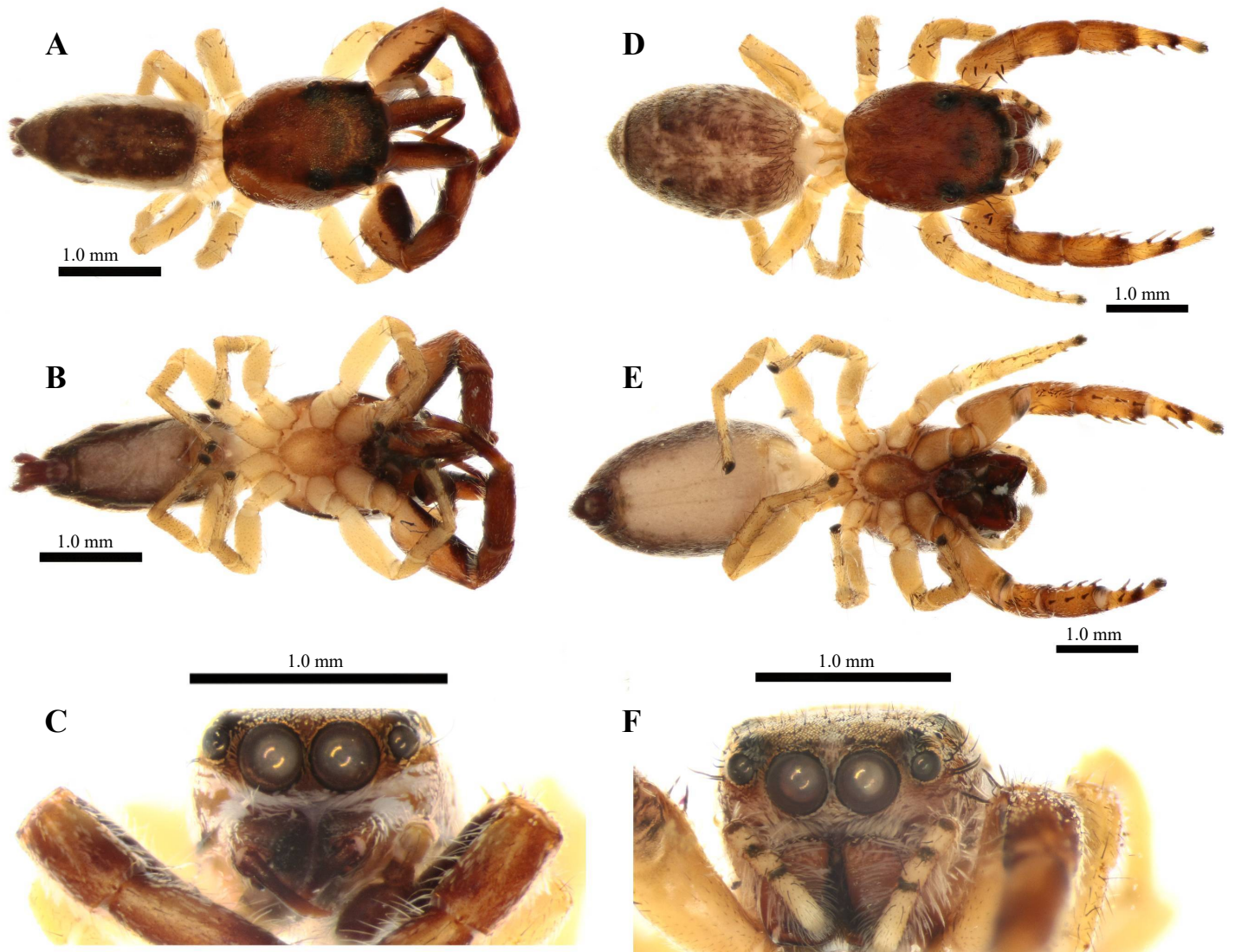
*Hentzia antillana*: Richman 1989: 326, figs. 3–4, 102–108 (♂♀).

**Material examined.** 1 ♂ (ASC J15 1 HRY), Ascension Island, -7.927534, -14.343771, 137 m, 24/01/2022, coll. A. Sharp; 1 imm. ♀ (ASC L16 1 VB), Ascension Island, -7.938235, -14.327193, 472 m, 21/02/2022, coll. A. Sharp; 1 ♀ (ASC E15 2 VB), Ascension Island, -7.932359, -14.384064, 133 m, 07/01/2022, coll. A. Sharp; 1 ♀ (ASC B15 2 HPF), Ascension Island, -7.927149, -14.414751, 15 m, 04/02/2022, coll. A. Sharp; 1 imm. ♀ (ASC E15 3 VB), Ascension Island, -7.928866, -14.387608, 119 m, 07/01/2022, coll. A. Sharp; 1 ♀ (ASC E19 2 VB), Ascension Island, -7.966313, -14.386926, 91 m, 15/02/2022, coll. A. Sharp; 1 ♂ (ASC J15 2 VB), Ascension Island, -7.932092, -14.345357, 180 m, 21/01/2022, coll. A. Sharp; 1 ♀ (ASC M17 1 PFF), Ascension Island, -7.945118, -14.319347, 444 m, 25/02/2022, coll. A. Sharp; 1 ♂ (ASC, no number), Georgetown, 18/07/20,

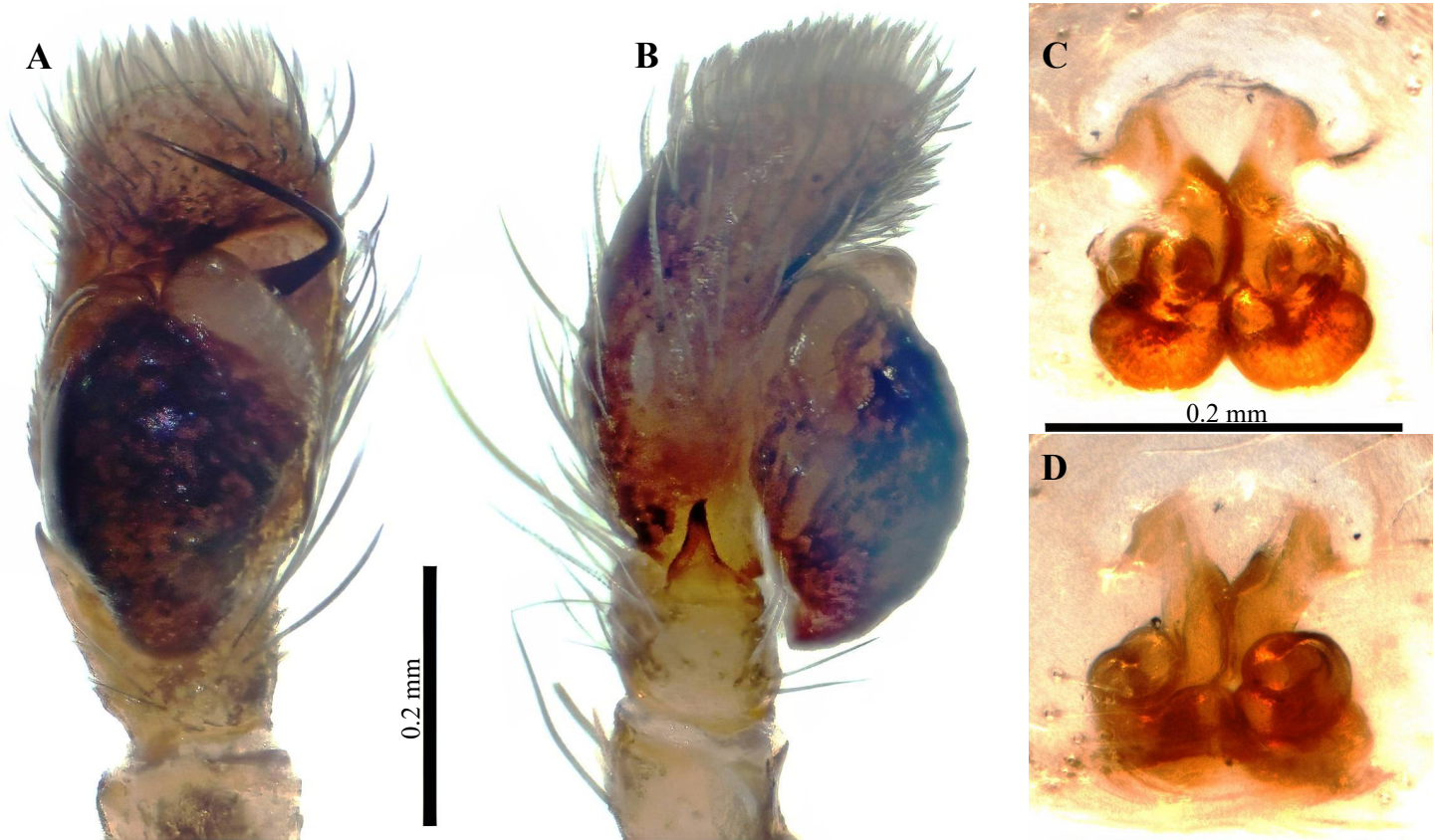
collector not stated; 1 ♂ (ASC, no number), Georgetown, 21/07/19, collector not stated; 2 imm. (ASC E19 3 VB), Ascension Island, -7.966313, -14.386926, 91 m, 15/02/2022, coll. A. Sharp; 1 imm. (ASC K19 2 HPF), Ascension Island, -7.938235, -14.327193, 472 m, 24/02/2022, coll. A. Sharp; 1 imm. (ASC J15 1 VB), Ascension Island, -7.963792, -14.388453, 118 m, 18/02/2022, coll. A. Sharp; 1 ♀ (ASC G16 1 HC), Ascension Island, -7.917752, -14.327999, 14 m, 03/02/2022, coll. A. Sharp; 1 imm. (ASC G16 2 VB), Ascension Island, -7.927576, -14.340473, 147 m, 24/01/2022, coll. A. Sharp; 1 imm. (ASC G16 3 VB), Ascension Island, -7.957993, -14.350751, 507 m, 14/01/2022, coll. A. Sharp.

**Distribution.** Originally described based on a type series from Antigua, Cuba, Haiti and the Virgin Islands (Bryant 1940), until now thought to be a Caribbean endemic. Antigua, Ascension Island (new record), Barbuda, British Virgin Islands, Cuba, Dominican Republic, Guadeloupe, Haiti, Martinique, Montserrat, Puerto Rico, Saba, Saint Kitts and Nevis, Saint Lucia and Saint Maarten (Bryant 1940; Richman 1989; this work).

**Remarks.** Newly recorded from Ascension (Figures 1-2), and indeed the first records from the South Atlantic. This species was very likely introduced with air freight or by shipping.



**Figure 1.** *Hentzia antillana* Bryant, 1940 adult male (A–C) and female (D–F) from Ascension Island. **A**, Male, habitus, dorsal. **B**, Same, ventral. **C**, Male, frontal view of eyes and chelicerae. **D**, Female habitus, dorsal. **E**, Same, ventral. **F**, Female, frontal view of eyes and chelicerae.



**Figure 2.** *Hentzia antillana* Bryant, 1940 adult male (A–B) and female (C–D) from Ascension Island. **A**, Right male palp, ventral view. **B**, Same, retrolateral view. **C**, Epigyne, ventral view. **D**, Epigyne, dorsal view.

***Menemerus bivittatus* (Dufour 1831)**

*Salticus bivittatus* Dufour 1831: 369, pl. 11, fig. 5 (♀).

For full synonymy list, see WSC 2023.

**Material examined.** 1 ♀ (ASC J15 1 PFM) Ascension Island, -7.927534, -14.343771, 137 m, 24/01/2022, coll. A. Sharp; 1 ♀ (ASC J15 1 PFF) Ascension Island, -7.927534, -14.343771, 137 m, 24/01/2022, coll. A. Sharp; 1 ♀ (ASC 00836) Ascension Island, -7.912300761, -14.40160336, 25/10/12, coll. L. F. White; 1 imm. (ASC J15 3 HPM) Ascension Island, -7.922999, -14.404769, 12 m, 18/03/2022, coll. A. Sharp; 1 ♂ (BMNH), Ascension Island, 12–31/09/1957, coll. E. A. Duffey, ‘tube 19’; 2 imm. (BMNH), Ascension Island, 12–31/09/1957, coll. E. A. Duffey, ‘tube 39’; 1 imm. (BMNH), Ascension Island, 12–31/09/1957, coll. E. A. Duffey, ‘tube Bou 44’.

**Distribution.** Described by Dufour (1831) from the Iberian Peninsula (as Hispania), probably indigenous to Northern Africa. Introduced worldwide in the Americas, Europe and parts of South Asia, Southeast Asia, and Oceania (World Spider Catalog, 2023).

**Remarks.** A reasonably common species, although not as frequently collected as *H. adansoni* and *P. paykulli* and restricted to areas of human habitation. Duffey (1964: 244) already noticed this and stated that this species: "... was only taken on or inside buildings. ...."

***Plexippus paykulli* (Audouin 1826)***Attus paykullii* Audouin 1826: 409, pl. 7, fig. 22 (♂).

For full taxonomic synonymy list, see WSC 2023.

**Material examined.** 1 ♀ (ASC BBISL OPP1), Boatswain Bird Island, 2016, coll. L. F. White; 1 ♀ (ASC BBISL OPP1), Boatswain Bird Island, 2016, coll. L. F. White; 1 ♂ (ASC H14 1 HPF), Ascension Island, -7.918706, -14.357854, 161 m, 27/01/2022, coll. A. Sharp; 1 imm. (ASC G16 3 HC), Ascension Island, -7.941495, -14.368996, 246 m, 08/03/2022, coll. A. Sharp; 1 imm. (ASC E15 3 HC), Ascension Island, -7.928866, -14.387608, 119 m, 07/01/2022, coll. A. Sharp; 1 ♀ (ASC G16 1 PFF), Ascension Island, -7.936308, -14.373035, 186 m, 11/03/2022, coll. A. Sharp; 1 imm. (ASC F17 2 HC), Ascension Island, -7.94918, -14.376301, 169 m, 28/02/2022, coll. A. Sharp; 1 ♀ (ASC L CREV PF), Comfortless Crevices, 2023, coll. A. Sharp; 1 imm. (ASC, number illegible), Ascension Island [no other data]; 2 imm. (ASC RS EPS NAT), Ascension Island, -7.95077, -14.34472, 808 m, 25/04/2023, coll. A. Sharp; 2 imm. (ASC WR EPS NAT), Ascension Island, -7.95208, -14.34007, 758 m, 25/04/2023, coll. A. Sharp; 2 ♀♀, 2 imm. (ASC 1160), Boatswain Bird Island 27/05/1995, hand collected, coll. and colln. P. Ashmole and M. Ashmole; 1 imm. (ASC 1173), Boatswain Bird Island, 26–27/05/1995, coll. and colln. P. Ashmole and M. Ashmole; 3 ♂♂, 3 imm. ♂, 1 imm. ♀, 1 imm. (ASC 1181), Boatswain Bird Island, 26–27/05/1995, coll. and colln. P. Ashmole and M. Ashmole; 1 ♂ (ASC 00376), Ascension Island, -7.912300761, -14.40160336, 04/07/12, coll. L. F. White; 1 ♀ (ASC NW500), Ascension Island, -7.922906985, -14.3392617, 28/02/13, coll. L. F. White; 1 imm. (ASC 00286), Ascension Island, -7.912300761, -14.40160336, 14/06/12, coll. L. F. White; 1 imm. (ASC G16 2 PFM), Ascension Island, -7.96276, -14.384734, 104 m, 15/02/2022, coll. A. Sharp; 3 ♂♂, 1 ♀ (BMNH), Ascension Island, 12–31/09/1957, coll. E. A. Duffey, tube 31; 1 ♂, 1 ♀ (BMNH), [same data, except tube 127]; 1 ♂ (BMNH), [same data, except tube 7]; 1 ♂ (BMNH), [same data, except tube 3015]; 1 ♂ (BMNH), [same data, except tube 90]; 1 ♂ (BMNH), [same data, except tube 122]; 1 imm. (BMNH), [same data, except tube 83]; 1 imm. (BMNH), [same data, except tube 43]; 1 ♀, 1 imm. ♀, 2 imm. (BMNH), [same data, except tube 81]; 1 ♀, 1 imm. (BMNH), [same data, except tube 20]; 1 imm. ♂ (BMNH), [same data, except tube 110]; 1 ♂ (BMNH), [same data, except tube 66]; 7 ♀, 2 imm. ♀, 6 imm. (BMNH), [same data, except tube 85]; 1 ♀ (BMNH), [same data, except tube 123]; 1 ♀ (BMNH), [same data, except tube 77]; 3 ♂♂, 6 ♀ (BMNH), [same data, except tube 65]; 1 imm. (BMNH), [same data, except tube 117]; 1 imm. ♂ (BMNH), [same data, except tube 6]; 1 ♂ (BMNH), [same data, except tube 116]; 1 ♀ (BMNH), [same data, except tube 80]; 1 imm. (BMNH), [same data, except tube 12]; 4 imm. (BMNH), [same data, except tube 52].

**Distribution.** Described by Audouin (1826) from Egypt, probably indigenous to the Middle East and Northern Africa. Introduced worldwide (WSC 2023), often found in sympatry with *H. adansoni* (see above).

**Remarks.** A very common and widespread species. Duffey (1964: 241) reports *P. paykulli* from Boatswain Bird Island, where he found it to be abundant. He also found it throughout the mainland. These observations are in keeping with recently collected material, showing the distribution of this species has apparently not radically changed since.

### Discussion

Dahl (1892), who presented the first records of spiders from Ascension, recorded '*Dendryphantès* sp.' from Ascension Island. We have seen any specimens of this genus from the island, nor has it been reported again in the published literature, and thus we cannot comment on it with any certainty. However, given that *Dendryphantès purcelli* Peckham & Peckham 1903 occurs on neighbouring Saint Helena (Clark & Benoit 1977; DS pers. obs.) this could have been the species found by Dahl. In any case, its continued existence on-island is doubtful since it has not been collected on Ascension Island for over 130 years (Duffey 1964; Ashmole & Ashmole 1997, 2000; AS pers. obs.). It is possible this [introduced?] species died out on Ascension, as happened with the Lycosidae (wolf spider) populations previously reported by Duffey (1964) (Russell-Smith & Sherwood in prep.).

## Acknowledgements

We thank Wayne Maddison (Beaty Biodiversity Museum, Canada) and Galina Azarkina (Institute of Systematics and Ecology of Animals, Russia) for assistance with identification of *Hentzia antillana*. Vicky Wilkins (Species Recovery Trust and IUCN Species Survival Commission Mid-Atlantic Islands Invertebrate Specialist Group) is thanked for supporting this work and commenting on early drafts. This work was made possible by funding to the senior author through the Darwin Plus grant DPLUS135: "From pseudoscorpions to crickets: securing Ascension Island's unique invertebrates," funded by the Darwin Plus Initiative, United Kingdom Government, and administered by Ascension Island Government and supported by the Species Recovery Trust.

## References

- Ashmole & Ashmole 1997.** N. P. Ashmole and M. J. Ashmole. The land fauna of Ascension Island: New data from caves and lava flows, and a reconstruction of the prehistoric ecosystem. *Journal of Biogeography* 24: 549–589.
- Ashmole & Ashmole 2000.** P. Ashmole and M. Ashmole. *St Helena and Ascension Island: a natural history*. Anthony Nelson Ltd., Shropshire, UK, 475 pp.
- Audouin 1826.** V. Audouin. Explication sommaire des planches d'araignées de l'Égypte et de la Syrie. In: Savigny, M. J. C. L. de: "Description de l'Égypte, ou recueil des observations et des recherches qui ont été faites en Égypte pendant l'expédition de l'armée française, publié par les ordres de sa Majesté l'Empereur Napoléon le Grand". *Histoire Naturelle* 1(4): 1–339 (arachnids, pp. 99–186, pl. 1–7).
- Berland 1926.** L. Berland. Les Araignées ubiquistes, ou à large répartition, et leurs moyens de dissémination. *Compte rendu sommaire des séances de la Société de biogéographie* 3. 65–67.
- Bryant 1940.** E. B. Bryant. Cuban spiders in the Museum of Comparative Zoology. *Bulletin of the Museum of Comparative Zoology* 86: 247–532.
- Clark & Benoit 1977.** D. J. Clark and P. L. G. Benoit. Fam. Salticidae. In: *La faune terrestre de l'île de Sainte-Hélène IV*. Annales, Musée Royal de l'Afrique Centrale, Sciences zoologiques (Zool.-Ser. 8°) 220: 87–103.
- Dahl 1892.** F. Dahl. Die Landfauna von Ascension. In: V. Hensen, *Ergebnisse der in dem Atlantischen Ocean von mitte Juli von Anfang Nov. 1889 aufgeführten Plankton-Expedition der Humboldt-Stiftung* 1: 204–209.
- Duffey 1964.** E. Duffey. The terrestrial ecology of Ascension Island. *Journal of Applied Ecology* 1: 219–251.
- Dufour 1831.** L. Dufour. Descriptions et figures de quelques Arachnides nouvelles ou mal connues et procédé pour conserver à sec ces Invertébrés dans les collections. *Annales des Sciences Naturelles, Zoologie, Paris* 22: 355–371, pl. 10–11.
- Marx 1883.** G. Marx. Araneina. In: Howard, L. O. (ed.) *A list of the invertebrate fauna of South Carolina*. Charleston, pp. 21–26.
- Peckham & Peckham 1903.** G. W. and E. G. Peckham. New species of the family Attidae from South Africa, with notes on the distribution of the genera found in the Ethiopian region. *Transactions of the Wisconsin Academy of Sciences, Arts and Letters* 14 (1): 173–278, pl. 19–29.
- Richman 1989.** D. B. Richman. A revision of the genus *Hentzia* (Araneae, Salticidae). *Journal of Arachnology* 17: 285–344.
- WSC 2023.** World Spider Catalog. Version 24.5. Natural History Museum Bern, online at <http://wsc.nmbe.ch>, accessed on 12 DEC 2023. doi: 10.24436/2