

## Selbuvotter Errata

I have made every effort to make the book as accurate as possible, but it is inevitable that mistakes will be found. Updated 1/7/2008.

**40-42** - Somehow the file that got included to make the chart for Annemor01 was messed up. No idea how that happened, because I remember fixing it. Whatever. Here's the [fixed chart](#) as a pdf.

Also note, you'll need to increase one stitch somewhere on the first row of the main chart, for 61 sts, and that you'll have 73, not 62, after doing all the thumb gusset increases. I fully admit my slackertude.

**44** - The chart is incomplete at the base of the thumb. [Download corrected chart.](#)

**48-49** - There's a few rounds missing, and the increases are in the wrong place. Work the lace cuff, then work a round plain in MC. Then work Chart A. Work two rounds in MC, increasing 2 stitches on the first round, for 50 sts. I think what Elisabeth did was to start the palm after one round, then start the handback a round later, but she's a real Norwegian who's been knitting this style of mittens for her whole life. Her kung fu is stronger than mine; I need to follow a chart more precisely. :)

**51** - in Chart B, the grey bar for the thumb hole should be 11 st, not 9. Please color in the white stitches on either side of the grey bar - and remember both palms.

**54** - The finger counts aren't correct. [Download corrected chart.](#)

**60** - in Chart B, the stitch counts are shifted one stitch to the left: the pinky is 9 sts, the rest are all 10. The right hand is correct. [Download a new pdf](#) for the correction.

**65** - The finger counts aren't correct. [Download corrected chart.](#)

**68** - The finger counts aren't correct. [Download corrected chart.](#)

**71** - The finger counts aren't correct. [Download corrected chart.](#)

**p 87** - in Chart A you are instructed to use a M1 increase in the thumb gusset. My stitch count was off, you can just knit that stitch in the MC.

Also on p 87 - in Chart A the top selburose has a petal that is bumped over one square. You can knit it correctly as the others are done, or have some wonderful authentically Selbu mittens by leaving the mistake in. It's your choice!

**88** - to clarify: After working Chart B you should have 48 stitches, which increases to 53 stitches on the first round of Chart C. Then after you increase for the thumb gusset you'll have 59 sts.

**92** - There is an error in the chart thumb gusset. [Download a new pdf](#) for the correction.

**97** - There is an error in the chart thumb gusset. [Download a new pdf](#) for the correction. (In short, there shouldn't be those white boxes on the outside of the middle Make 1.)

**101** - pick up 11 stitches for the Thumb, not 12. I miscounted on the chart when writing the instructions.

**102** - you will have 28 thumb stitches, not 29. See above, p101. Work thumb back in Chart C, not B. Duh.

**103** - There's a mistake in the chart - as you get to the fingertip you'll see missing black stitches in the Dancing Ants patten that's to the left of the hand back. Go ahead and color those in on your chart.

**104** - The "Lower Hand" section says to work Chart A a second time. It should say Chart B.

**108** - Pick up 13 stitches for the thumb, not 15.

Annemor #2 - chart correction

Selbuvotter

© Copyright 2007 Terri Shea. All Rights Reserved.



Chart A

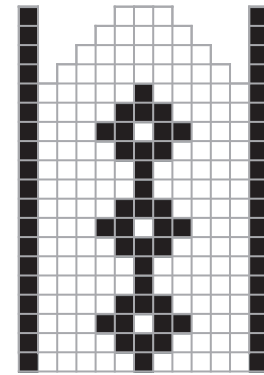


Chart C

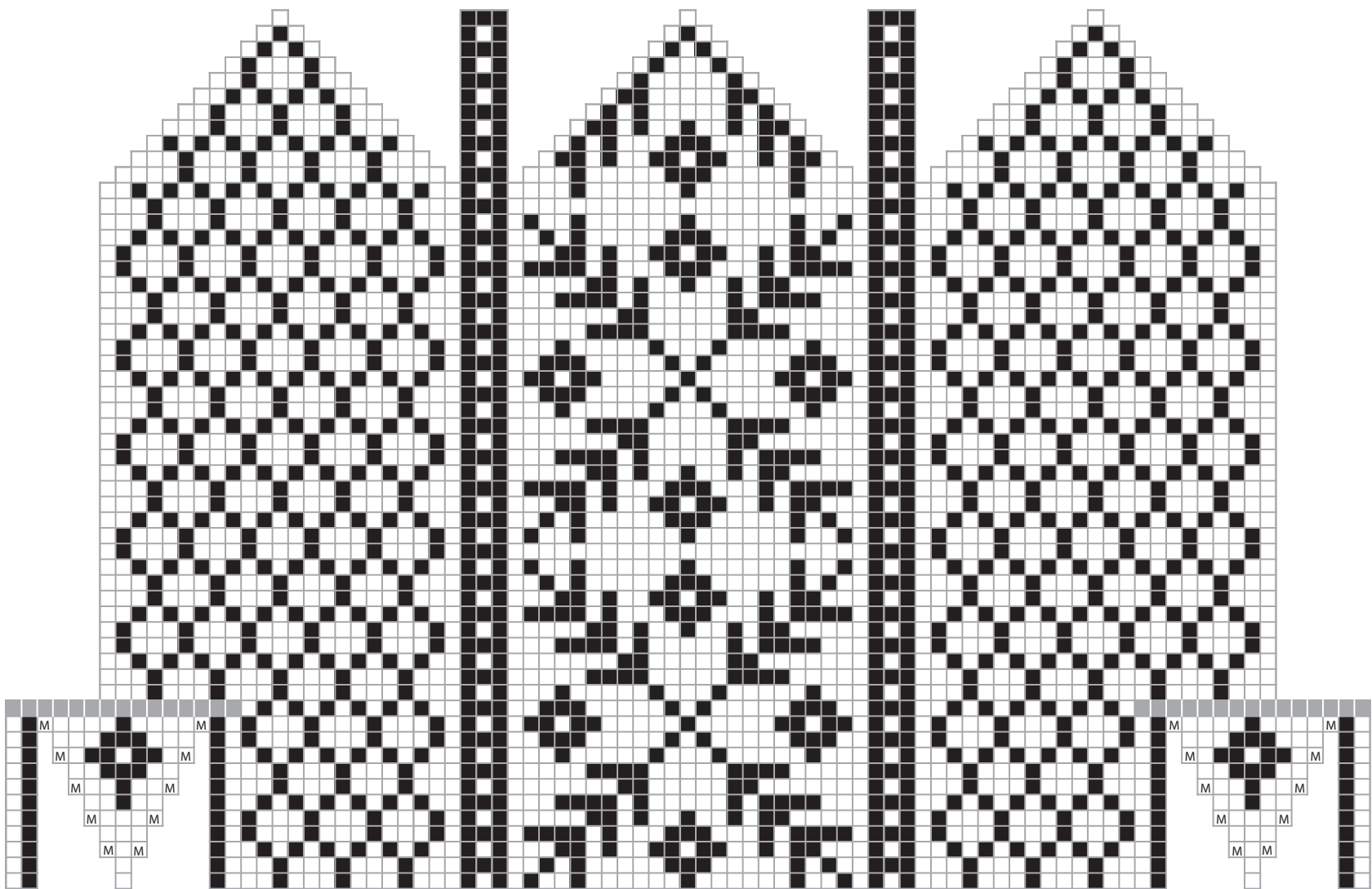


Chart B

Annemor 06 chart correction



Chart A

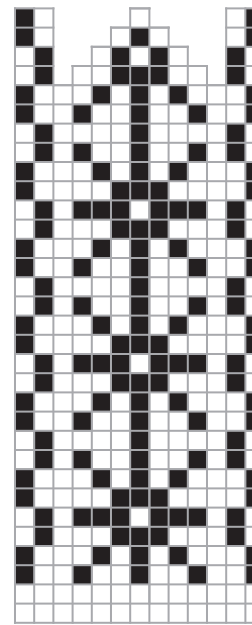


Chart C

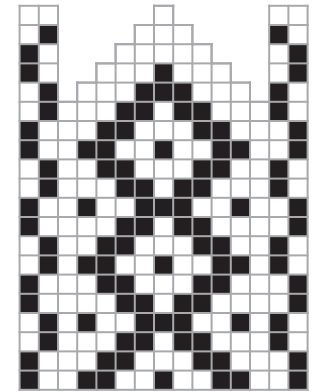


Chart D

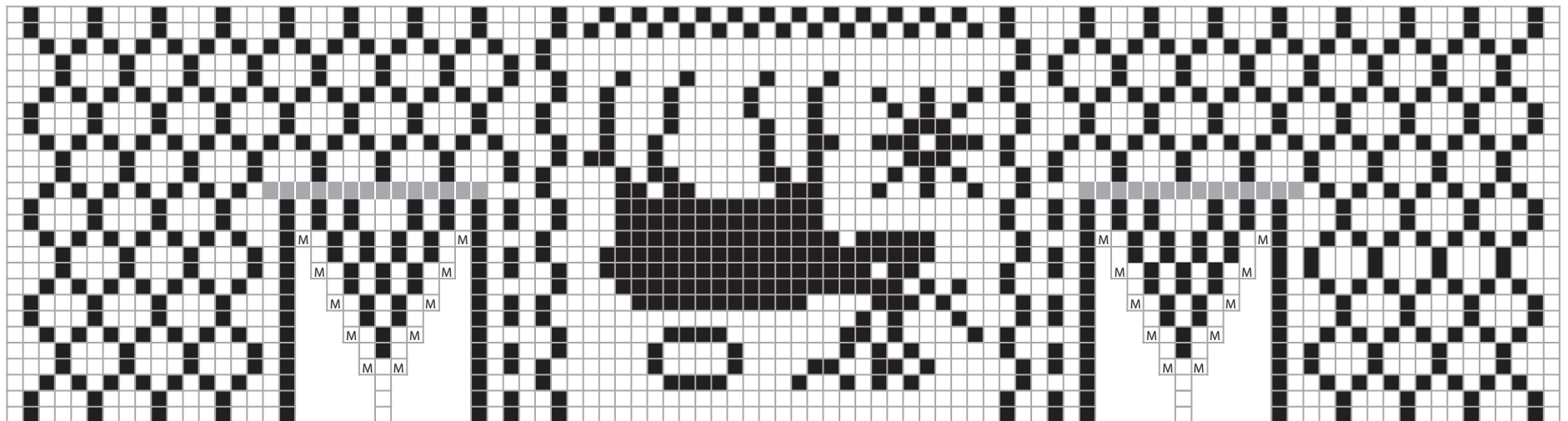


Chart B

Annemor 08 chart correction

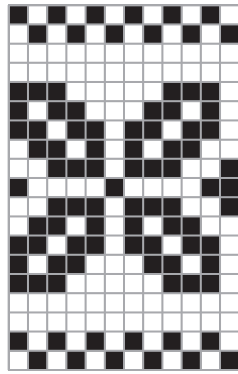
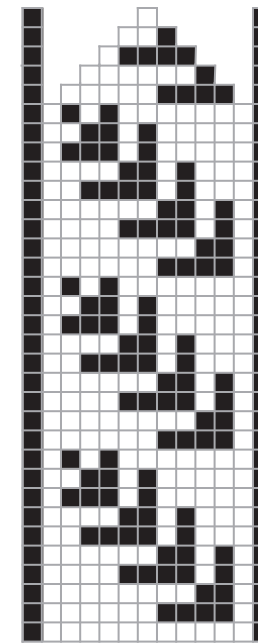
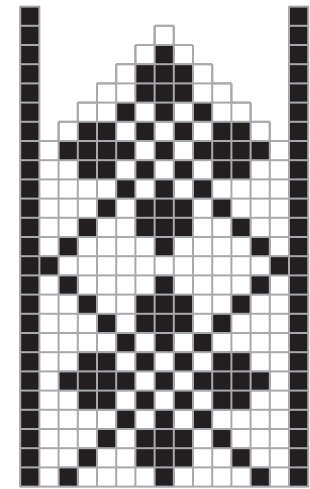


Chart A



Finger



Thumb

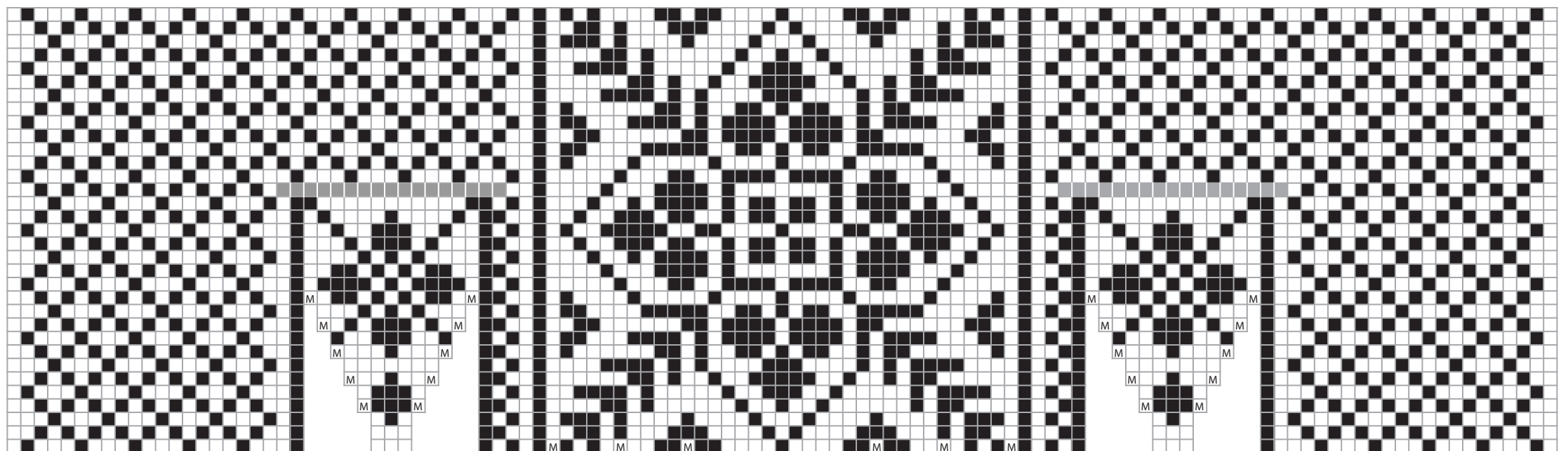


Chart B

annemor 10 chart correction

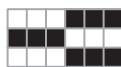


Chart A

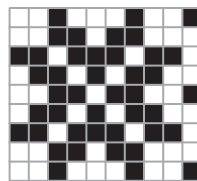


Chart B

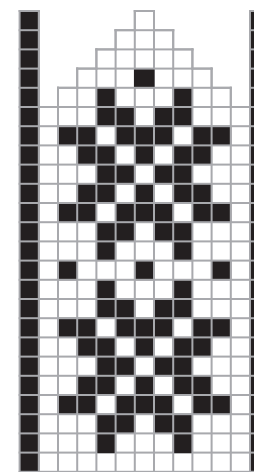


Chart D

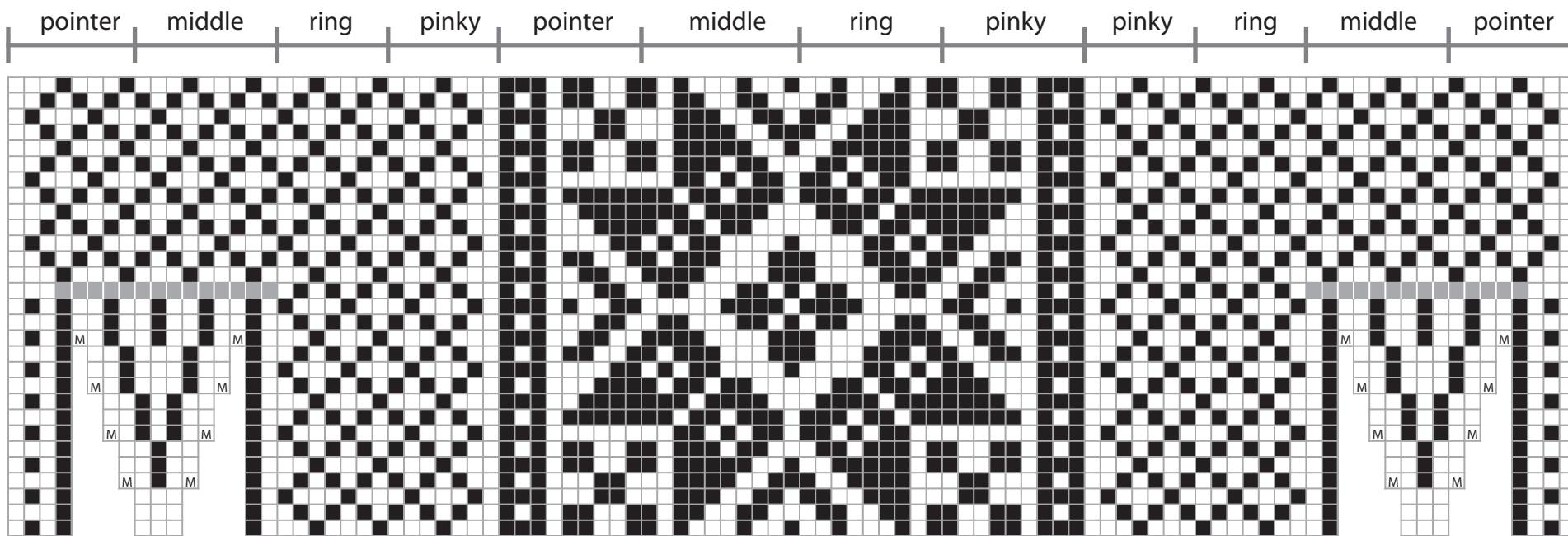


Chart C

Annemor 11 chart correction

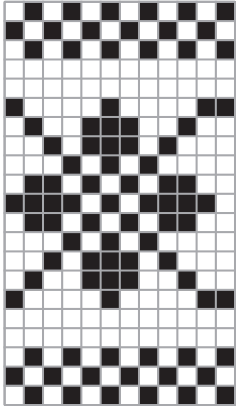


Chart A

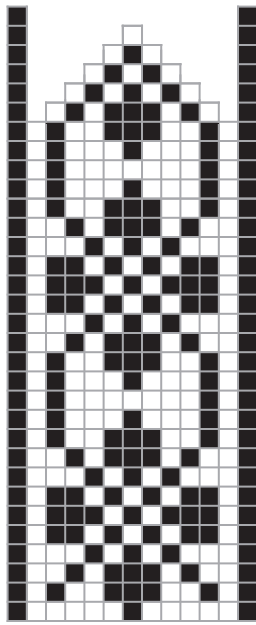


Chart C

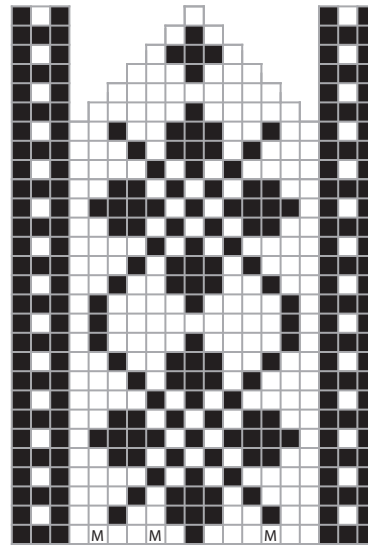


Chart D

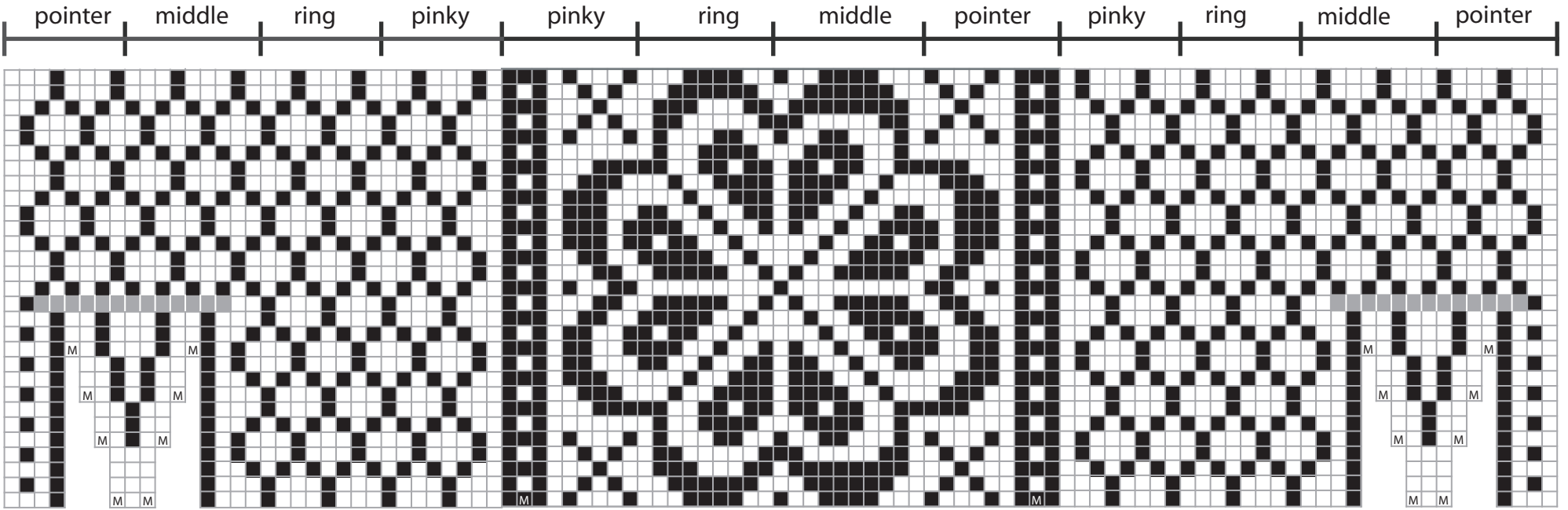


Chart B

Annemor12 chart correction

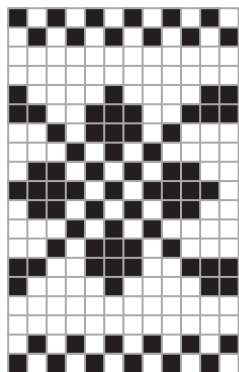


Chart A

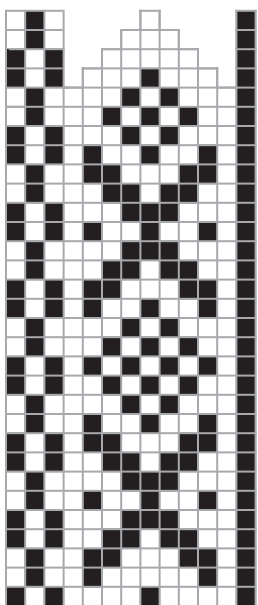


Chart C - Pointers & Pinkies

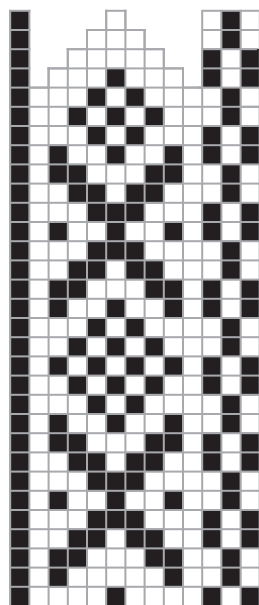


Chart C

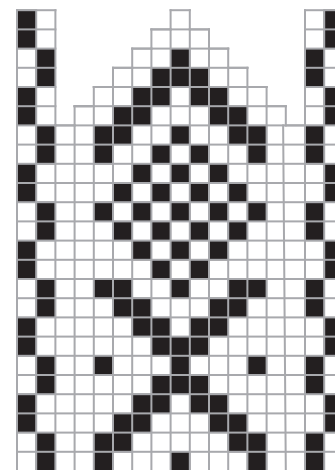


Chart D

pinky ring middle pointer pinky ring middle pointer pointer middle ring pinky

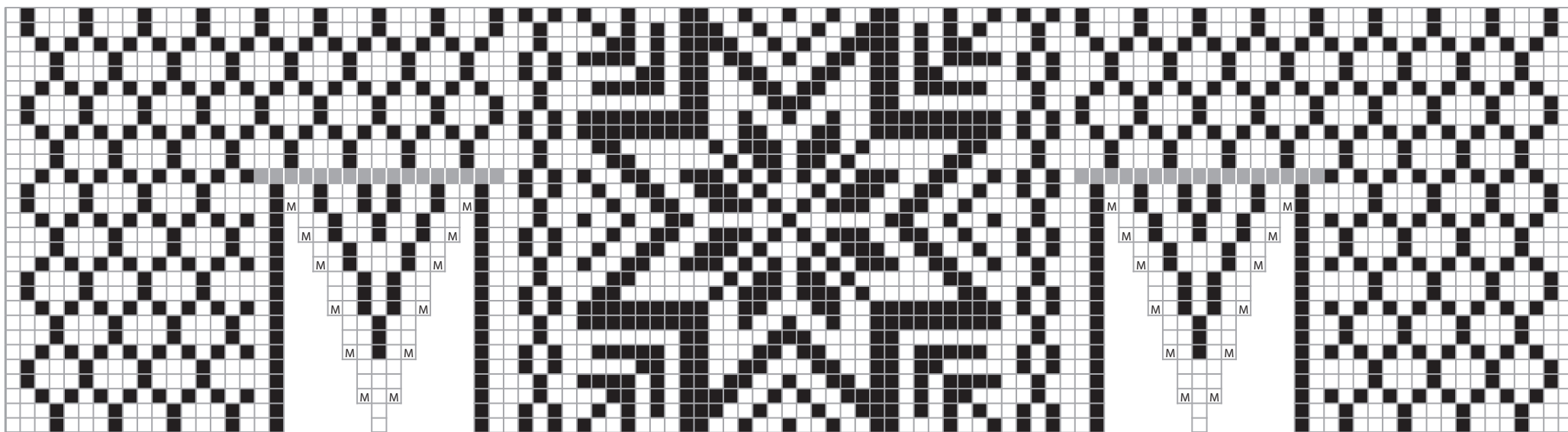


Chart B

Annemor13 chart correction

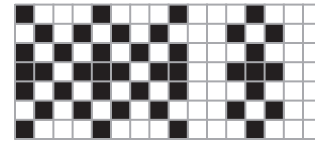


Chart A

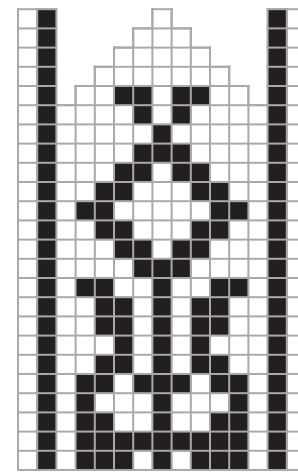


Chart C

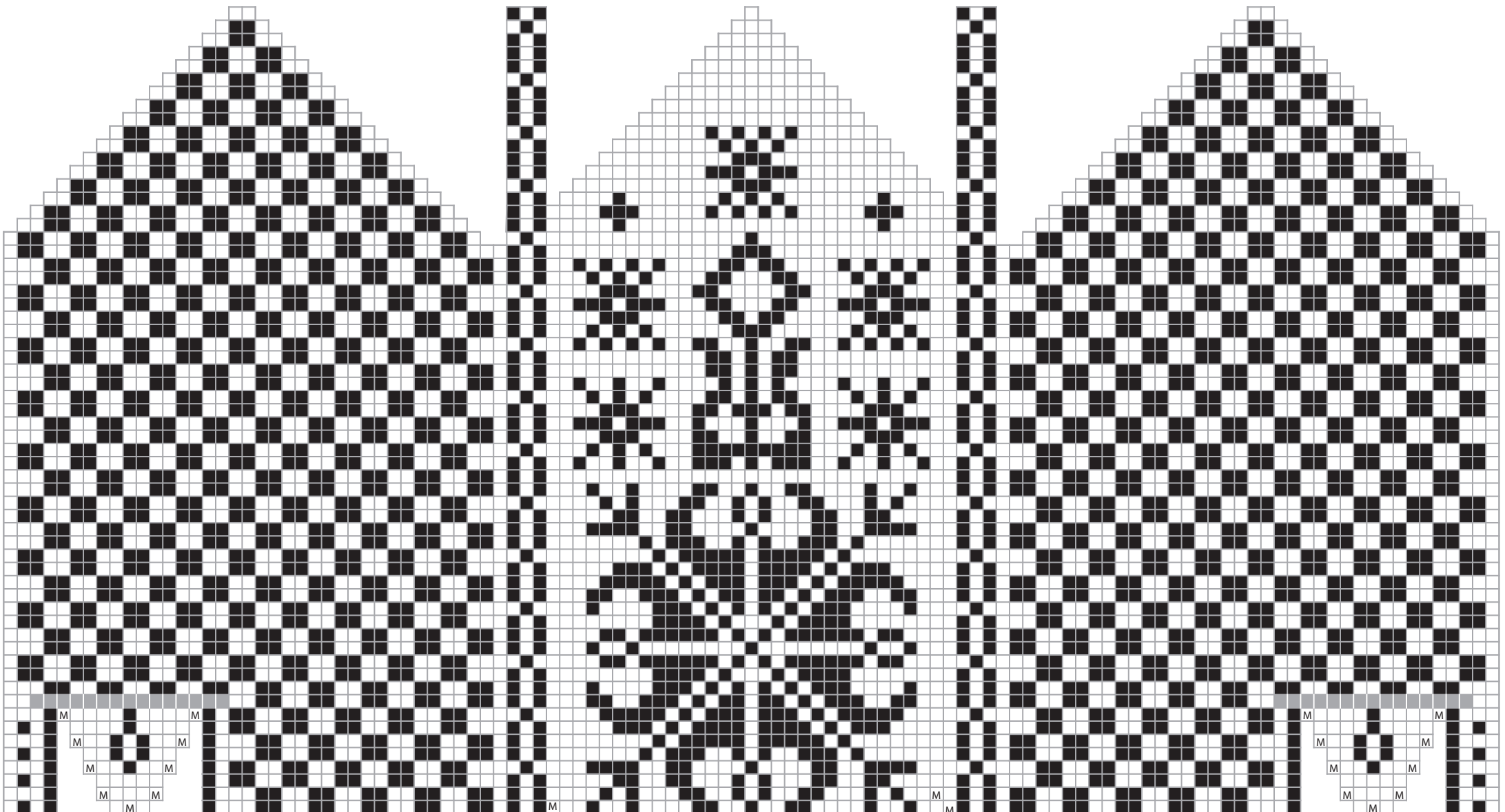


Chart B



NHM 3 chart correction

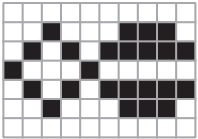


Chart A

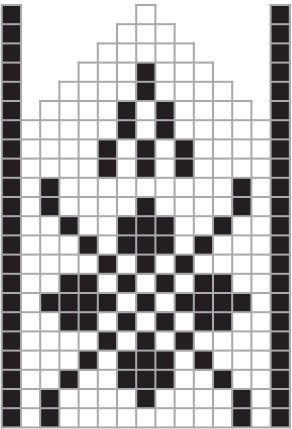


Chart C

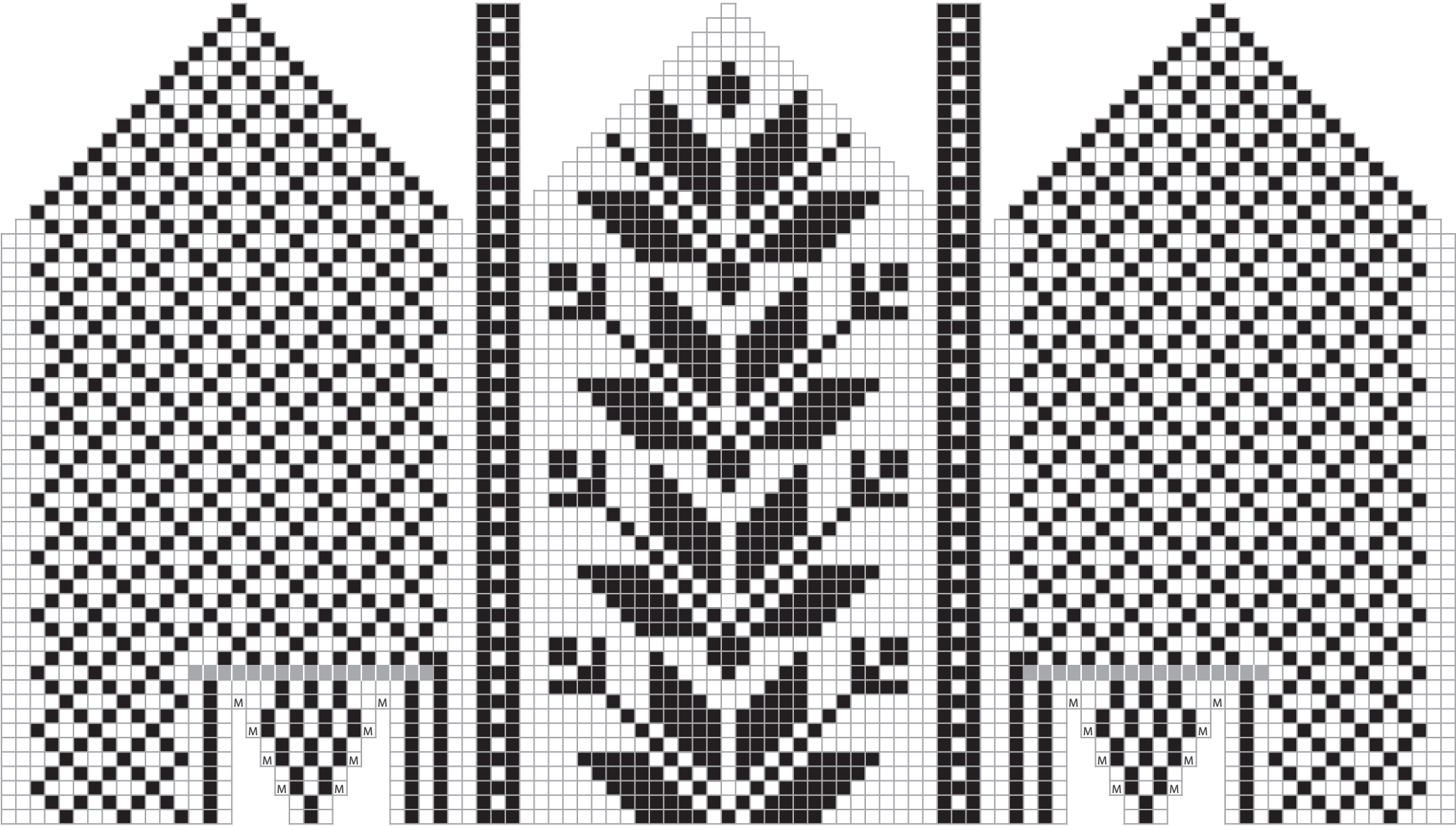


Chart B

NHM5 chart correction

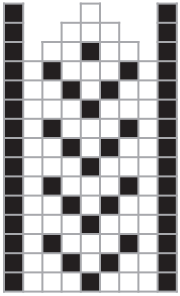


Chart B

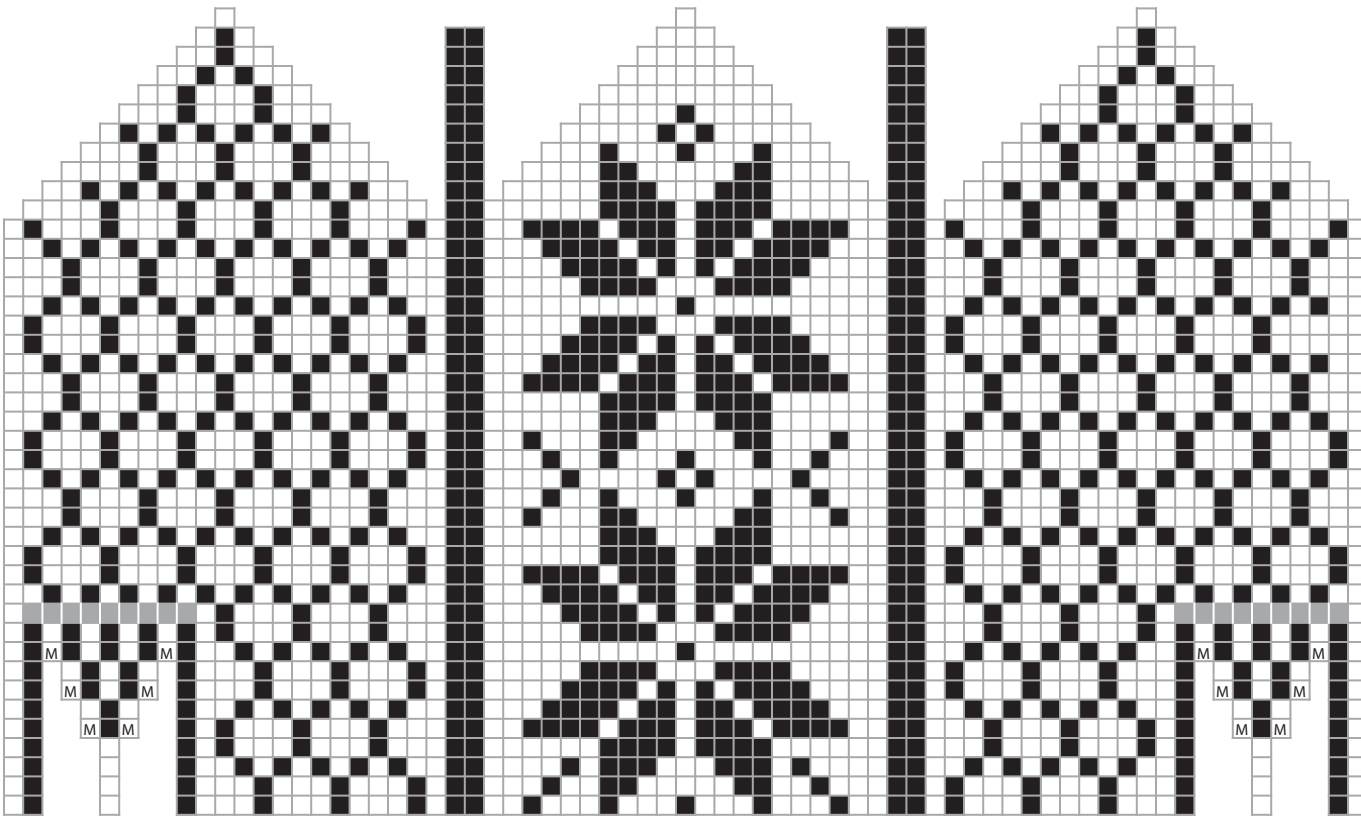


Chart A

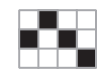


Chart A

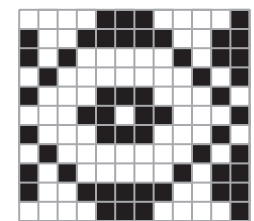


Chart B

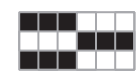


Chart C

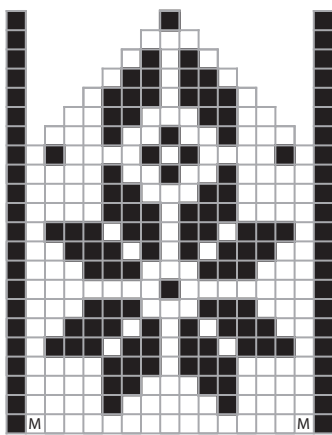
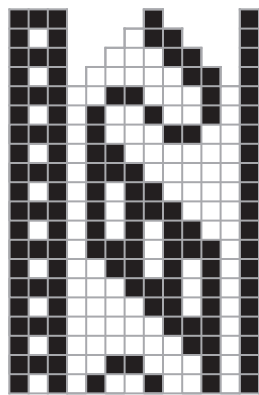
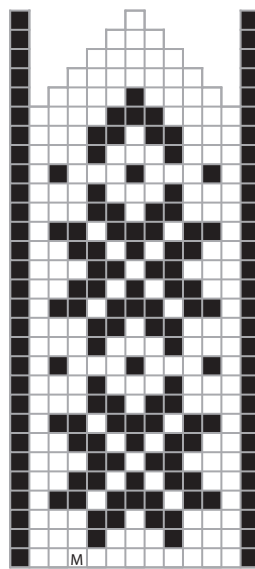


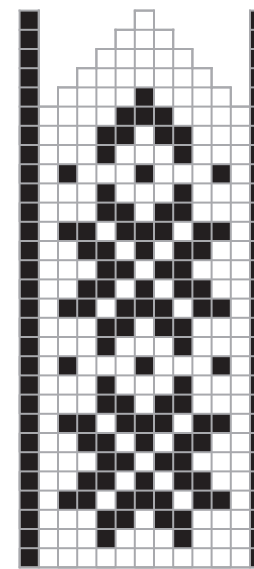
Chart E



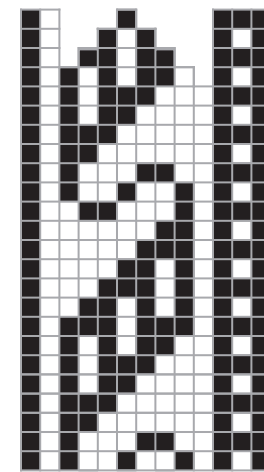
pinky



ring



middle



pointer

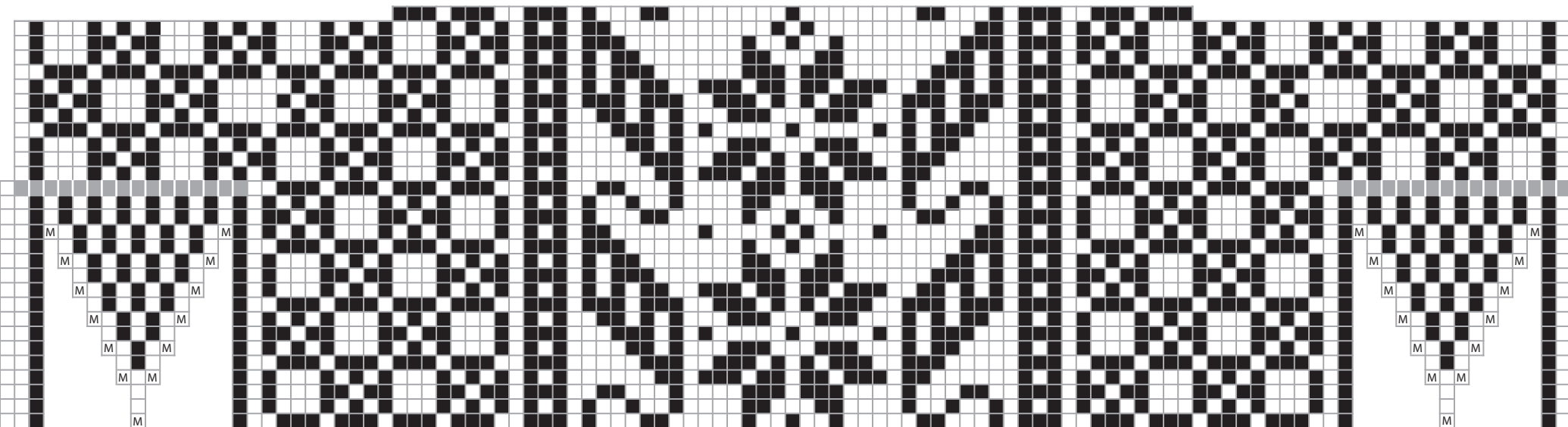


Chart D