

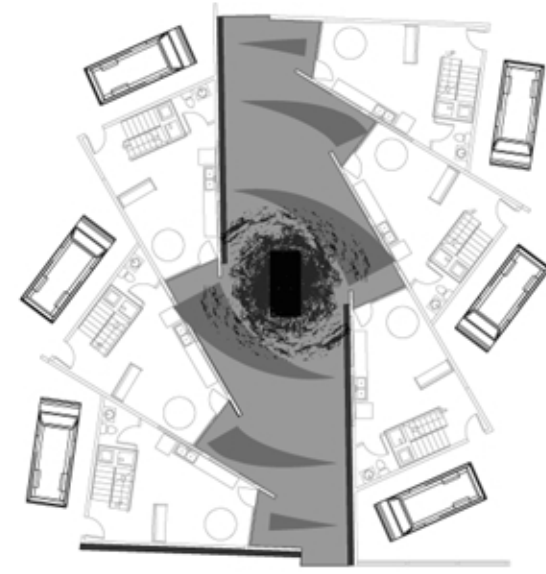
INNER PORTLAND INFILL 925 BURNSIDE AVE.

THE COURTYARD IS THE ESSENTIAL OPEN GATHERING SPACE IN THIS COMMUNITY. EVERY ASPECT OF THIS PROJECT REVOLVES AROUND THIS SINGLE PRINCIPLE, ESPECIALLY THE BUILDINGS AND THEIR SIMPLE, OPEN FLOOR PLANS

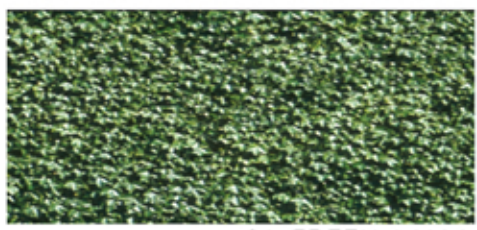
1550 SQ.FT.
6 UNITS
9300 TOTAL SQ.FT.
40% BUILD COVERAGE
31'-0" MAXIMUM HEIGHT



THE GROUND FLOOR CONNECTS THE DINING OF THE FAMILY ROOM WITH THE COMMUNITY COURTYARD, ALLOWING FOR A MORE SOCIAL ATMOSPHERE. THE SECOND FLOOR BELONGS TO THE KIDS. THEY HAVE MINIMAL SLEEPING PODS IN ORDER TO MAXIMIZE PLAY AREA. THE THIRD FLOOR SERVES AS A RETREAT FOR THE PARENTS. PRIVATE SPACE CAN BE ENJOYED WHILE STILL BEING ABLE TO KEEP IN CONTACT WITH THE CHILDREN PLAYING IN THE COURTYARD OVER THE BALCONY.



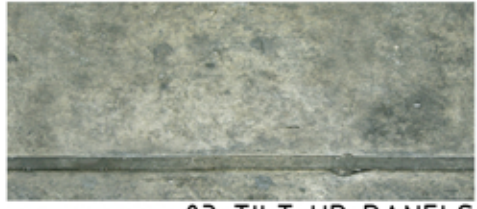
STORMWATER DRAINS IN A CIRCULAR PATTERN TO THE BOARD WALLS OF THE COURTYARD INTO A SUB-LEVEL GRAVEL PIT



01 GREEN WALL



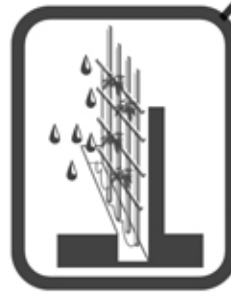
02 WOOD SIDING



03 TILT UP PANELS

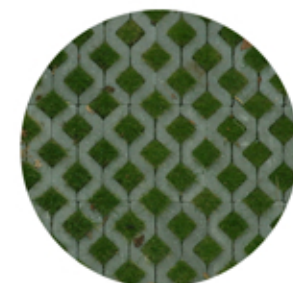
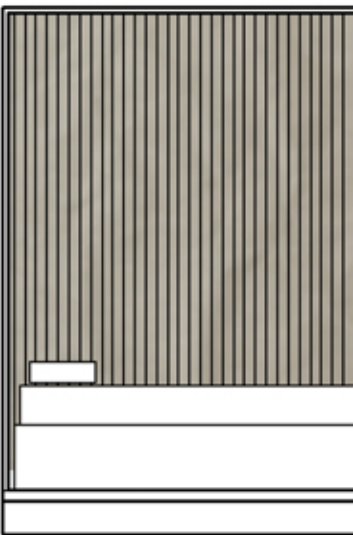


01 FLOOR 1/16"=1'-0"



SLEEPING POD

A NEW PROTOTYPE FOR SLEEPING USING THOUGHTFUL, LIGHTWEIGHT CONSTRUCTION ALLOWING ONE TO RETURN TO THE WOMB.



HYBRIDSCAPING

TO DRAIN THE ENORMOUS AMOUNTS OF STORMWATER POROUS SURFACES ARE USED. A GROUND COVER FILLED BLOCK FILLS THE COURTYARD SPACE GIVING KIDS THE BEST OF BOTH WORLDS. THE DRIVEWAYS USE A PEA GRAVEL TO MAXIMIZE DRAINAGE AND CHI.

