

C1080

JEFFRIES TUTOR.

and letters from Jeffries



TUDOR

Exercise Book

One of these Days

Three horizontal lines for writing, enclosed in a rounded rectangular border.

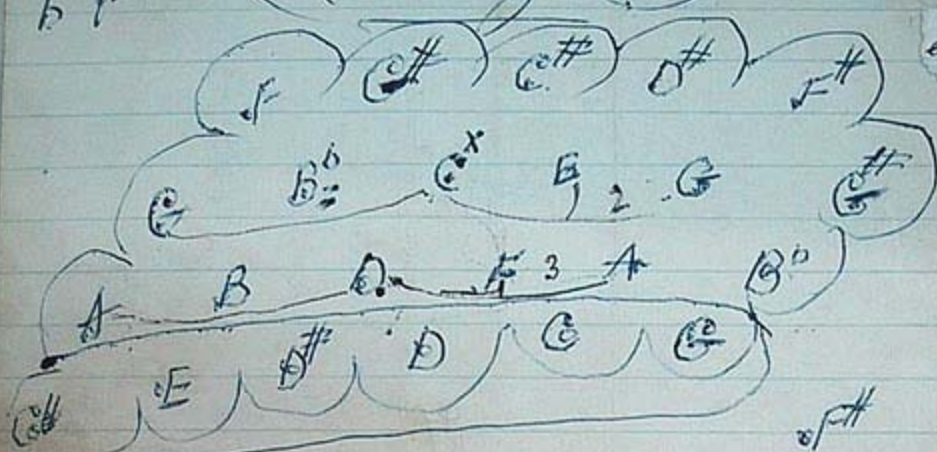
SPICERS TUDOR BOOK No. 300

L.G. Bb C | L.B D F G
R.G. Bb C | R.B D F G

sharp
b flat

L. Hand Side

ne
et,



De 1 the age

Chords in C

Minor 7 seconds

- (C) C E G
- (A) C F A
- (D) C E G
- (G) B D F C A B C
- (E) C E G

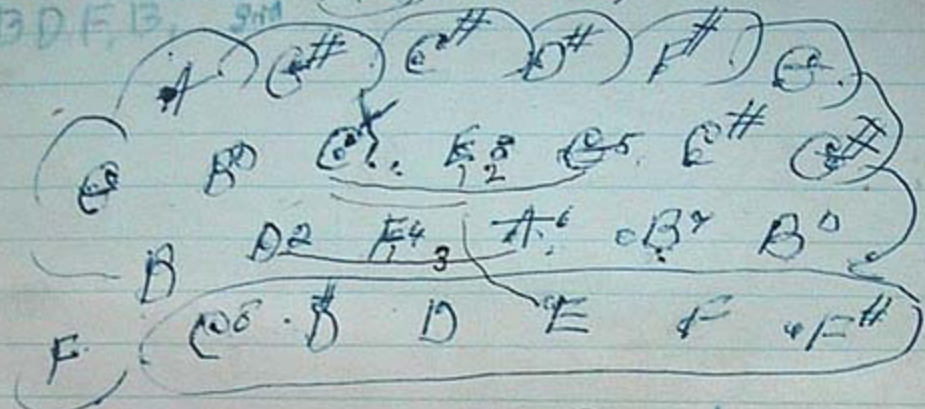
TAKE
NOTE

- (A) C E A
- (A) D F A
- (A) C E A
- D B C#
- (A) C E A

G
B
C
D
E
F
G
A
B
C

G, C, E, G, 2nd Right Hand Side

me
et,



F C A L G B C E R 2 B G

- C = second finger
- D = first finger
- E = second finger
- F = first finger
- G = second finger
- A = first finger
- B = third finger
- C = first

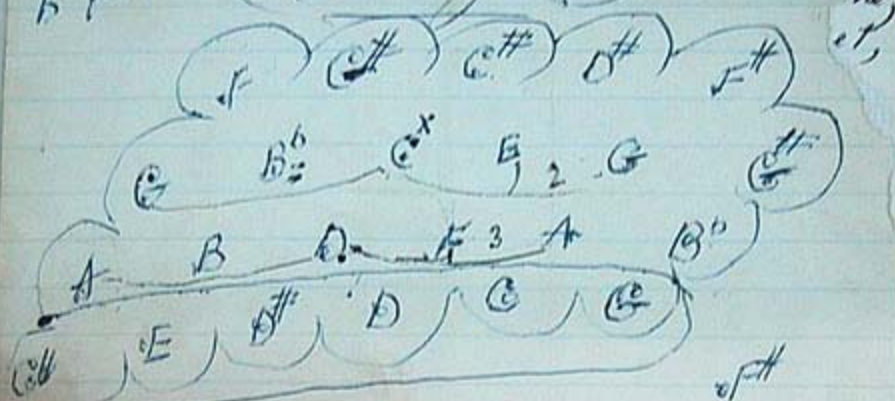
2 A on Right
A C E A on Left

Don Right
L A B D E on Left

For Right
G G Right Hand
G B G E Left Hand

sharp
b flat

(L. Hand Side)



10/12/2018

Chords in C

1) C E G

Minor 7th

Chords in F# Minor 7th

A) C F A

A) D F A

B) D F B

B) B D D

A) C F A

A) D F A

B) C E B

A) C# G

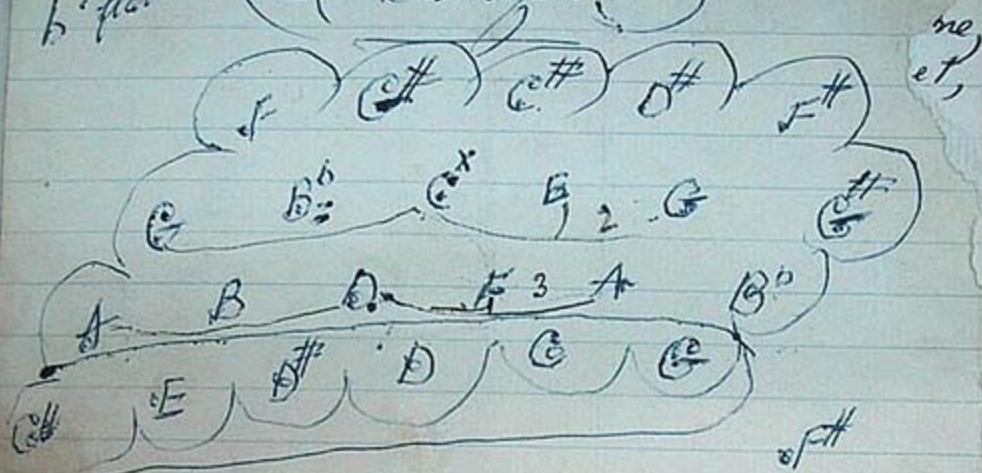
A) C F A

A) D F A

C) A C F

sharp
b flat

(L. Hand Side)



Chords in C

Do I know

C E G

Minor 7 seconds

B D G
C E G
A C D#

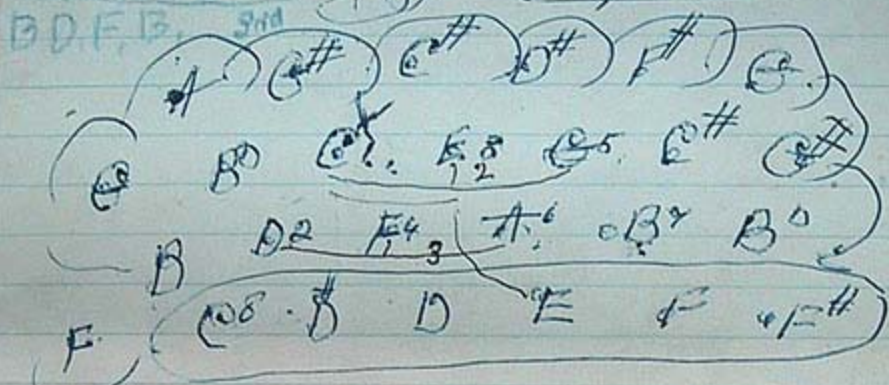
Key of G Minor

B E G
C E A
B E G
A B D#

A C D#
B D F#
B C E

B E G

G, C, E, G, 2nd Right Hand Side



F C A L. G B C E R. 2. B D E G.

C = second finger, 2 A... R...

- L. A. D. G. F# D C F# R
- L. A. C. D# A C D# R
- L. A. G. C# A G# G R
- L. D. E. G# D E G# R.

D#
A#
G#
E

L. A. D. G . F#	D C F# R
L. A C D#	A C D# R
L. A. G. C #	A G #, G R
L. D. E. G #	D E G# R.

Rita

CADACAD

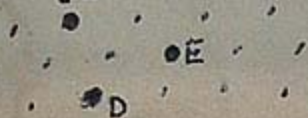
Polly

FACDCBEG

CBDACB^oACB^oD

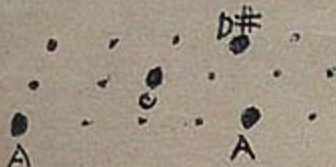
L. Side.

C#



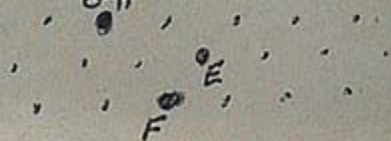
L Side,

D#



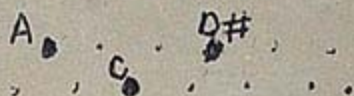
R. Side

G#



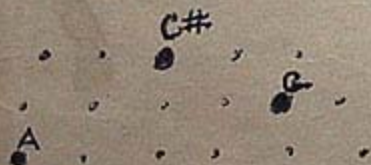
R. Side.

D#



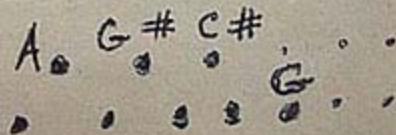
LEFT SIDE

C#



R. Side

A G# C#



ARITHMETICAL TABLES

Sterling Money Table

4 Farthings	1 Penny, d.
12 Pence	1 Shilling s.
2 Shillings	1 Florin
2 Shillings & Sixpence	1 Half-Crown
5 Shillings	1 Crown cr.
10 Shillings	1 Half-Gov.
20 Shillings	1 Sov. or,	1 Pound, £.
21 Shillings	1 Guinea

Arithmetical Signs

- + Plus' Sign of Addition
- Minus' Sign of Subtraction
- x Sign of Multiplication
- ÷ Sign of Division
- = Sign of Equality
- ∝ Sign of Proportion
- √ Sign of Square Root
- ∛ Sign of Cube Root
- ° Degree, ' Minute, " Second.
- ∴ Therefore

Apothecaries' Weight.

For Mixing Medicine

20 Grains	1 Scruple .. scr.
3 Scruples	1 Dram .. dr.
8 Drams	1 Ounce .. oz.
12 Ounces	1 Pound .. lb.

Long or Lineal Measure

12 Lines	1 Inch .. in.
12 Inches	1 Foot .. ft.
3 Feet	1 Yard .. yd.
1760 Yards	1 Mile
2 Yards	1 Fathom f.
3½ Yards	1 Pole
40 Poles	1 Furlong fur.
8 Furlongs	1 Mile

Square Measure

144 Square Inches	1 Square Foot
9 Square Feet	1 Square Yard
30¼ Square Yards	1 Square Pole
40 Square Poles	1 Rood
4 Roods	1 Acre

Solid or Cubic Measure

1728 Cubic Inches	1 Cubic Foot
27 Cubic Feet	1 Cubic Yard
24 Cubic Feet	1 Solid Perch
		Masons' Work
12 Cubic Feet	1 Solid Perch
		Brickwork

Troy Weight

For Gold, Silver, and Jewels.

24 Grains	1 Pennyweight, ¤wt.
20 Pennyweight Ounces	1 Ounce .. oz.
12 Ounces	1 Pound .. lb.

Table of Time

60 Seconds	1 Minute
60 Minutes	1 Hour
24 Hours	1 Day
7 Days	1 Week
4 Weeks	1 Lunar Month
365 Days	1 Year
366 Days	1 Leap Year
52 Weeks	1 Year
12 Calendars	1 Year
13 Lunar Months	1 Year

Table of Motion

60" Seconds	1 Minute
60' Minutes	1 Degree
30" Degrees	1 Sign
12" Signs, or 360"	= the circle of the Earth.

Days in the Month

Thirty Days have September,
April, June, and November,
All the rest have thirty-one,
Excepting February alone,
Which has but twenty-eight days clear
And twenty-nine in each leap year.

Paper

24 Sheets	1 Quire
20 Quires	1 Ream

METRICAL SYSTEM WITH ENGLISH EQUIVALENTS

Measure of Weight (Advp.)

Centigram	0.100th	Gramme	1 = 0.0016 0.0056 dr.
Decigram	0.10th	"	1 = 0.0056 0.0204 "
Gramme	0	"	1 = 0.0354 0.125 "
Decagram	10	Grammes	1 = 0.354 1.25 "
Hectogram	100	"	1 = 3.54 12.5 "
Kilogram	1,000	"	1 = 2.20462 lb. or about 2 1/16.

Measure of Length

Centimetre	0.100th	Metre	1 = 0 yds. 0.39 in.
Decimetre	0.10th	"	1 = 0 3.92 "
Metre	0	"	1 = 1 3.92 "
Decametre	10	Metres	1 = 10 35.70 "
Hectometre	100	"	1 = 100 112.00 "
Kilometre	1,000	"	1 = 1000 3280.84 "

or 3213 1/2 miles.

MULTIPLICATION TABLE

Times	2	3	4	5	6	7	8	9	10	11	12
1	2	3	4	5	6	7	8	9	10	11	12
2	4	6	8	10	12	14	16	18	20	22	24
3	6	9	12	15	18	21	24	27	30	33	36
4	8	12	16	20	24	28	32	36	40	44	48
5	10	15	20	25	30	35	40	45	50	55	60
6	12	18	24	30	36	42	48	54	60	66	72
7	14	21	28	35	42	49	56	63	70	77	84
8	16	24	32	40	48	56	64	72	80	88	96
9	18	27	36	45	54	63	72	81	90	99	108
10	20	30	40	50	60	70	80	90	100	110	120
11	22	33	44	55	66	77	88	99	110	121	132
12	24	36	48	60	72	84	96	108	120	132	144

MADE IN



ENGLA

Jeffrey Bros
5 Grace Park,
Karludern

Sept 4th 1939

W W 10

Received from Mr. Lawrence, the sum
of £3 Deposit on 130 Pledged Debt
Concertence in C.

Received the Above
Deposit - Jeffrey
Three Pounds
Deposit