

1829-1929  
CENTENARY of the ENGLISH CONCERTINA,  
Patented by Sir Charles Wheatstone, June 19th, 1829.

HIGHEST AWARDS.



INVENTIONS EXHIBITION,  
1885.



Grand Prize, 1903.



INTERNATIONAL EXHIBITION,  
1851 & 1872.

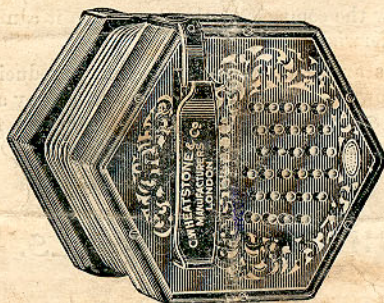
# PRICE LIST

OF

## "WHEATSTONE"

(Registered Trade Mark No. 440677)

# DUET



# CONCERTINAS,

MANUFACTURED BY

## C. WHEATSTONE & Co.,

Inventors and Patentees,

15 WEST STREET,

Charing Cross Road, LONDON, W.C. 2.

TELEGRAPHIC ADDRESS: "CLEF, WESTCENT, LONDON."

TELEPHONE: TEMPLE BAR, No. 6529.

**IMPORTANT NOTICE.—C. Wheatstone & Co. have absolute**

**All C. Wheatstone & Co.'s Duet Concertinas are tuned to the Moder**

**All Instruments fitted with Per**

## DUET

THE DUET Concertina was invented by SIR CHARLES WHEATSTONE, and patented in 1844. In its early days it was of very limited scope, some of the first instruments having only one octave on each side, but the compass was gradually increased, and in recent years have been greatly extended, and the instrument brought to a very high standard of excellence and perfection. It was introduced to supply a much needed want, namely, a Concertina on which the accompaniment to the solo can be played, as on the Pianoforte. It differs from the English Concertina in that it has a complete chromatic scale on EACH side, the right hand being for the Melody or Treble, and the left hand for the Accompaniment or Bass. It can also be played reversely, that is, the Melody on the left hand and the Accompaniment on the right, according to how the music is arranged. The DUET Concertina is very useful for Solo work, especially when the aid of a Piano is not available, as by the disposition of the Treble and Bass on opposite sides of the instrument the performer is enabled to play his own accompaniment. Harmonies and very extended chords can also for the same reason be produced.

A considerable number of pieces have been specially arranged for this instrument, but Pianoforte and Organ music can also be used, as in cases where the Bass descends below the compass of the Concertina it can generally be played an octave higher or otherwise adapted.

DUET Concertinas are Double-action, each key producing the same note or sound whether the bellows be pressed in or drawn out. They are made with 39, 46, 56, 58, 62, 67, 72, and 81 keys, and have a compass ranging from  $3\frac{1}{2}$  to 5 octaves, as shown on the diagrams.

### HEXAGON MODELS.

- |   |        |          |
|---|--------|----------|
| No. 32.—39 Keys. Mahogany, ivory keys, steel reeds, square case   | ... .. | £8 0 0   |
| No. 33.—46 Keys. Rosewood, nickel-silver keys, bushed, six-fold leather bellows, screwed notes, steel reeds, square case  | ... .. | £11 10 0 |
| No. 34.—46 Keys. Rosewood, best French Polish, moulded edges, round-top metal keys, bushed throughout, six-fold morocco bellows, screwed notes, best steel reeds, square case | ... .. | £13 10 0 |
| No. 35.—56 Keys. Same quality and finish as No. 34  | ... .. | £17 10 0 |
| No. 35a.—58 Keys. Same quality and finish as No. 34   | ... .. | £20 0 0  |
| No. 35b.—62 Keys. Same quality as No. 34  | ... .. | £23 0 0  |
- Nickel-plated Ends to Nos. 33 to 35a. £1 5s. extra.

no connection with any other firm of Concertina makers.  
 in Low Pitch New Philharmonic (C 522) unless otherwise ordered.  
 Selected Duplex Screwed Notes.

# CONCERTINAS.

## HEXAGON MODELS.

- No. 36.—46 Keys. Ebony, RAISED ENDS, finest finish spherical end silver keys, bushed throughout, duplex screwed notes, best tempered steel reeds, dark moro-co six-fold bellows, new improved action giving short touch and rapid articulation, best selected material, square case ... .. £20 10 0
- No. 37.—56 Keys. Same quality and finish as No. 36 ... £24 0 0
- No. 37a.—58 Keys. Same quality and finish as No. 36 ... £26 0 0
- No. 38.—62 Keys. Same quality and finish as No. 36, seven-fold bellows ... .. £28 0 0
- No. 39.—67 Keys. Same quality and finish as No. 36, eight-fold bellows ... .. £32 0 0

Nos. 36 to 39, in the New Æola Octagonal Model, £2 extra.

RAISED Nickel-plated Ends, best model, to Nos. 36 to 39, Hexagon Model, £1 10s. extra. Octagonal Model, £1 15s. extra.

## NEW ÆOLA OCTAGONAL MODEL ONLY.

- No. 40.—72 Keys. Same quality and finish as No. 36, eight-fold bellows ... .. £36 0 0
- No. 41.—81 Keys. Same quality and finish as No. 36, eight-fold bellows ... .. £40 0 0

RAISED Nickel-plated Ends, best model, to Nos. 40 and 41, £2 extra.

MINIATURE CONCERTINAS, English or Duet fingering, 12 or more keys, Hexagon Model, Nickel ends, from £6.

Duet Concertinas made with "Crane," "Triumph," or any other fingering.

Wheatstone's Instructions for the Duet Concertina, containing Diagrams, Scales, Exercises, Preludes, Chords, etc., and a Selection of Music specially arranged.

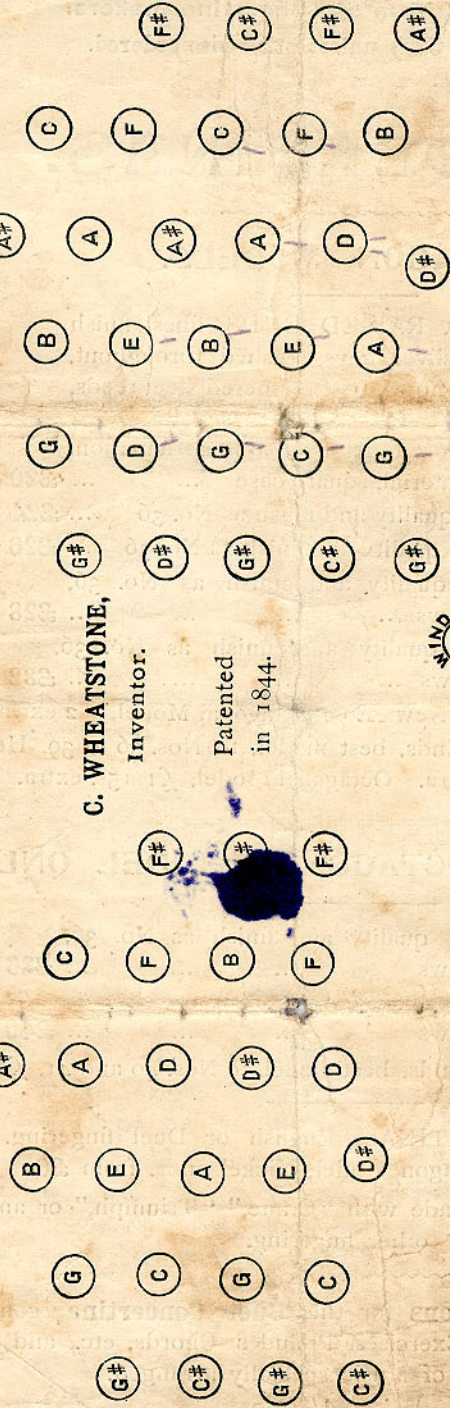
Price 4/6 net.

# DIAGRAM OF THE DUET CONCERTINA.

LEFT HAND.

56 Keys.

RIGHT HAND.



C. WHEATSTONE,

Inventor.

Patented  
in 1844.

