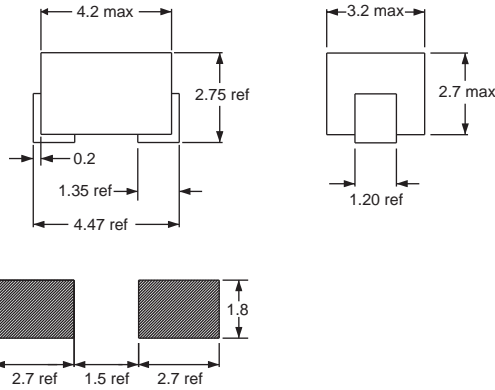
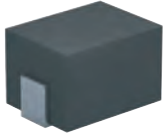


SMD BEADS

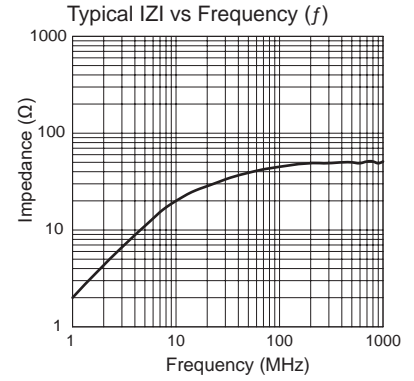
Flat Wire For High Currents



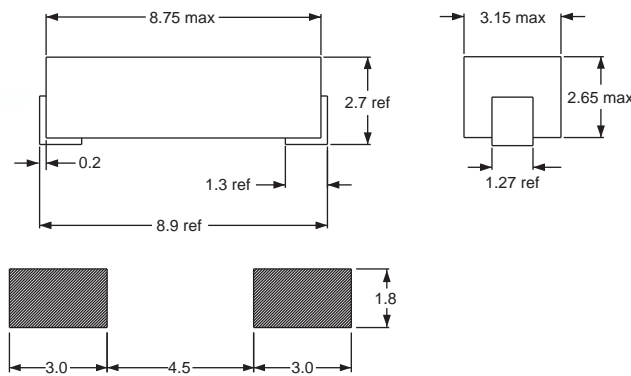
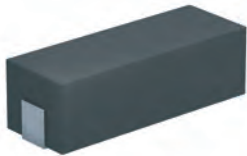
SMB/001



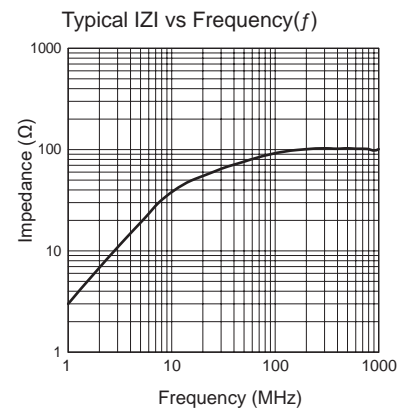
Recommended layout for solder pads



SMB/002



Recommended layout for solder pads



Part No	Impedance Z typ (Ω)		DCR max (Ω)	Rated DC Current max (A)
	56 Ω typ @ 100 MHz	63 Ω typ @ 300 MHz		
SMB/001-999X-YY	56 Ω typ @ 100 MHz	63 Ω typ @ 300 MHz	0.010	5
SMB/002-999X-YY	100 Ω typ @ 100 MHz	112 Ω typ @ 300 MHz	0.015	5

Core Material: Ferrite

Revision date: 15 Aug 2022

SPQ:

500 [-01]

Wide Band Chokes and Beads