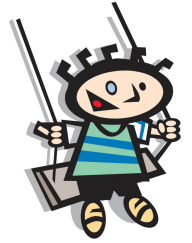


# MALUA BAY IMPROVEMENT GROUP

FUNDRAISING FOR A NEW PLAYGROUND FOR MALUA BAY

**YOUR NAME WILL GO DOWN IN HISTORY**

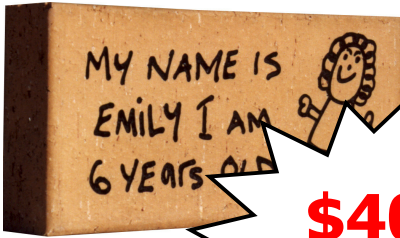


### INDIVIDUAL PAVER

Your donation of **\$30** or more entitles YOU to have your name engraved into a paver as a lasting record of your valued support. The paver will be permanently installed in the Malua Bay Playground

□	□	□	□	□	□	□	□	□	□	□	□	□	□	□	□
□	□	□	□	□	□	□	□	□	□	□	□	□	□	□	□

Engraving details: Please print clearly in block letters. Each square represents one letter, number, space or punctuation mark. (32 max)



A unique and lasting record of your support.  
*Memories & milestones. Celebrate a wedding, new baby, birthday or anniversary. A tribute to someone special.*

*A memorial to a loved one.*

Your donation of **\$40** or more entitles YOU to have your hand drawn image as a lasting record of your valued support. The paver will be permanently installed in Malua Bay Playground for all to see for generations to come.

Simply fill out this form and return with full payment by cheque or money order to:

**Malua Bay Improvement Group, The Secretary 3 Whipbird Place Malua Bay NSW 2536**

Contact Name: ..... Phone:.....

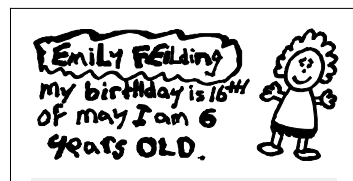
Address: ..... Individual paver  Hand Drawn Image

**MALUA BAY IMPROVEMENT GROUP** needs your support!  
 Please photocopy and pass on to business associates and friends.

cut along this line

**(ONE NAME PER PAVER)** Please follow these simple steps when creating your hand drawn image.

- Draw your image on the other side of this slip of paper. (the size is the same as the engraving area of a paver.)
- Draw your image using a good quality medium thickness black marker pen. (about 2mm thick.) Do not use a ballpoint pen!
- Make sure that you rub out any pencil lines as these will show up in the finished paver .
- Do not include computer generated or pasted pictures, the hand drawn image engraving process is set up to engrave hand drawn images only.
- Sample #1 has been drawn correctly. Sample #2 is incorrect it has a computer generated image and the text was written with a ballpoint pen.



Sample image #1

This is OK.



Sample image #2

This is Wrong.

