

RELIASOURCE®



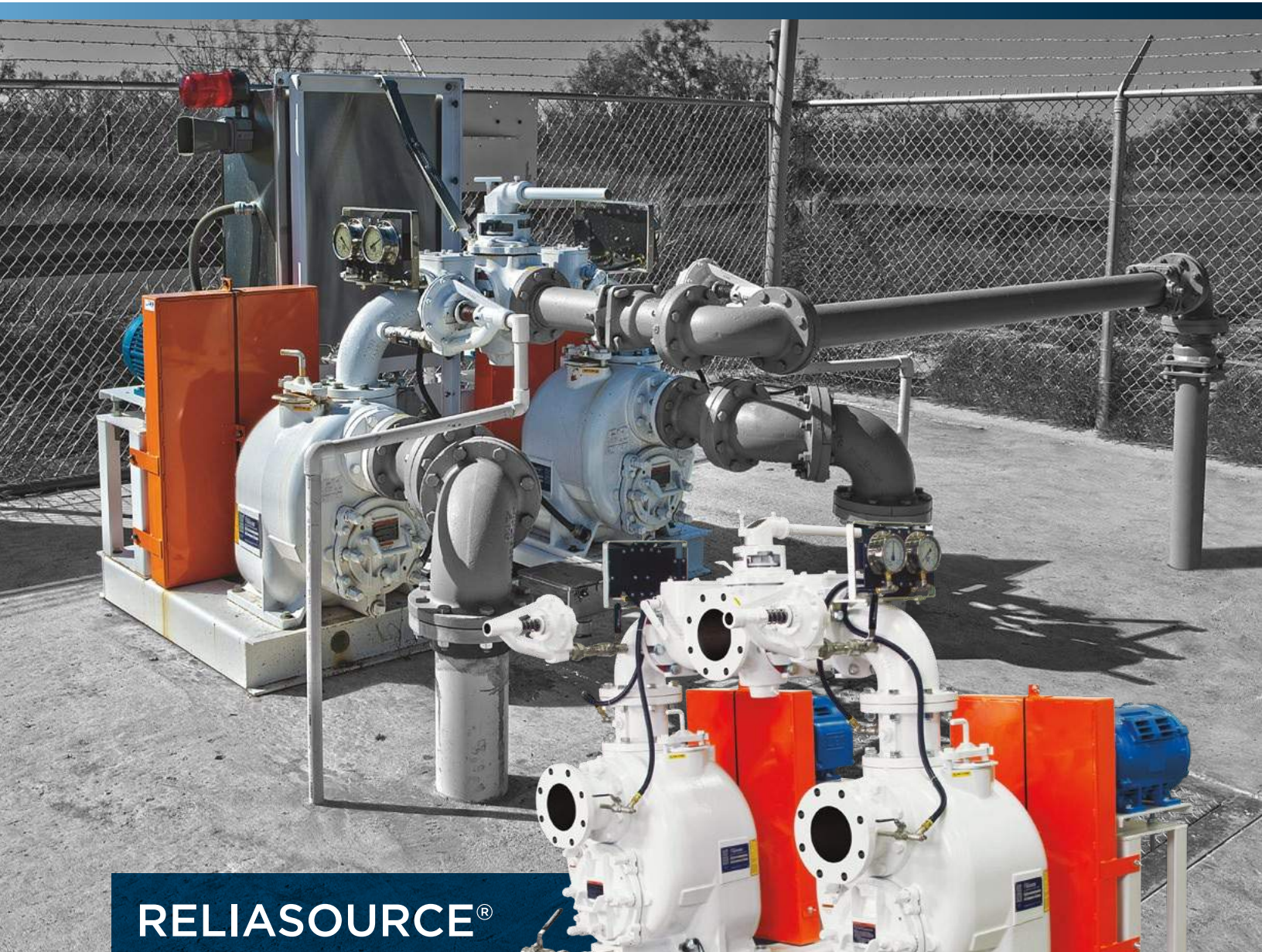
DJ Gongol & Associates, Inc.

PO Box 180 | West Des Moines, IA 50061-0180

4328 North Dawson | Cumming, IA 50061

515-223-4144 | 515-981-0581 fax

info@gongol.net



RELIASOURCE®

Your Single Source  
For Total Lift Station  
Reliability



*The Pump People®*





**DJ Gongol & Associates, Inc.**

PO Box 180 | West Des Moines, IA 50061-0180

4328 North Dawson | Cumming, IA 50061

515-223-4144 | 515-981-0581 fax

[info@gongol.net](mailto:info@gongol.net)



# A History Of Solving Municipal Challenges

**Gorman-Rupp has been revolutionizing the pumping industry since 1933. Many of the innovations introduced by Gorman-Rupp over the years have become industry standards.**

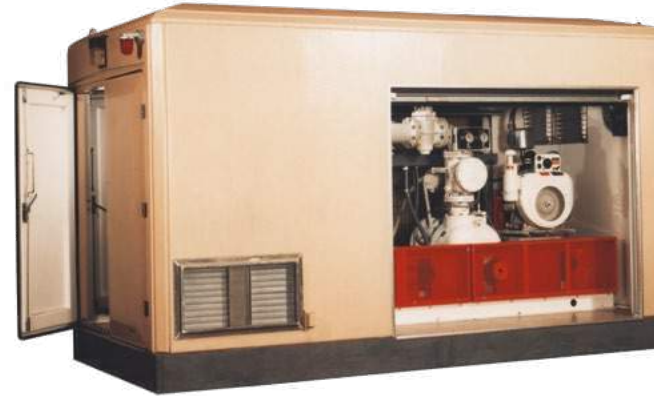
Gorman-Rupp developed its first self-priming centrifugal pump to provide our customers with a durable, reliable pump that could perform in a demanding environment. Since then, we've worked closely with our customers around the world to meet their solids-handling and clean fluid transfer needs.

With over one million Gorman-Rupp pumps and pump stations installed to date, we have the experience to intimately understand water and wastewater pumping requirements. Our worldwide network of distributors has experienced industry professionals on staff, giving us firsthand knowledge of your most difficult applications.

We help you solve these challenges and make the most of your limited resources by designing our pumps, lift stations and booster/reuse stations to deliver decades of trouble-free unattended performance. When you choose Gorman-Rupp for your municipal pumping applications, you'll experience some of the lowest life cycle costs in the industry and benefit from minimal service interruptions. And you'll enjoy one of the highest customer satisfaction ratings in the industry—guaranteed.

## A History of Innovation

**Gorman-Rupp has been manufacturing dependable lift stations for over 55 years. We engineer a full line of above-ground packages, which are 100% custom designed and assembled. All our lift stations come pretested and ready for immediate hookup to power and piping.**



## State-of-the-Art Equipment And Facilities

As the world's leading manufacturer of pumps and pumping systems, Gorman-Rupp offers you access to one of the largest and highest quality lines of lift stations.

We maintain nearly one million square feet of the most modern manufacturing, testing and warehousing facilities in the world. Our experienced engineers take advantage of the latest technologies and innovations to custom-design, manufacture and assemble our products.

We perform rigorous testing based on Hydraulic Institute standards and test to customers' actual operating conditions

in our state-of-the-art testing facility guaranteeing innovative, superior-quality products that are ready to tackle your toughest jobs.

To ensure you get the right equipment for your requirements, Gorman-Rupp partners with a worldwide network of distribution and provides them with the best and most extensive training. Gorman-Rupp distributors will work hand-in-hand with you to recommend, customize and specify equipment. And they are always available should you ever require service assistance.

**With just one number to call for parts and service, it's easy and convenient to keep your equipment performing as it should.**



ReliaSource®

# Reliable Heavy-Duty Lift Stations

For decades, municipalities have trusted Gorman-Rupp for the most reliable pump packages in the industry. But even the world's best pumps can't operate alone. ReliaSource® lift stations precisely match the right pumps, motors, controls and piping. Each system is pre-tested to ensure long-lasting, trouble-free operation.

## Custom Engineering And Design

Gorman-Rupp's line of ReliaSource® above-ground lift stations are fully customizable and eliminate costly service interruptions caused by inferior components. With Gorman-Rupp quality inside and out, ReliaSource packages outlast and outperform other lift stations on the market, delivering the performance you can rely on. Guaranteed.

### Specification

Our highly trained distribution team works hand-in-hand with both municipalities and consulting engineers to understand your wastewater and solids-handling challenges and analyze your total system requirements. Our distributors can help recommend and specify the best ReliaSource® lift station for the job.

### Precisely Matched

Our experienced engineers custom design your ReliaSource lift station to your specifications and needs. They precision match pumps, motors, controls, valves, pipes and accessories for maximum compatibility and performance.

### Factory Built

Components of a ReliaSource lift station are manufactured by Gorman-Rupp in our state-of-the-art facilities, taking advantage of the latest technologies and innovations. Each lift station is fully assembled in house by our experts.

### Testing

Every ReliaSource lift station is rigorously tested using a wide range of testing options based on customer specifications and guided by Hydraulic Institute testing standards. By testing the complete unit under your unique operating requirements, we ensure your equipment performs exactly as it should.

### Installation

Once complete, ReliaSource lift stations are shipped from the factory, ready for professional installation. Just add power and connect piping for years of reliable lift station performance.



DJ Gongol & Associates, Inc.

PO Box 180 | West Des Moines, IA 50061-0180  
4328 North Dawson | Cumming, IA 50061  
515-223-4144 | 515-981-0581 fax  
info@gongol.net





**Interior Wall Accommodates More Sophisticated Controls**

**Custom-Engineered NEMA-rated Automatic Controls**

- Includes your choice of adjustable pressure controls, H-O-A selectors, overload reset buttons and circuit breakers for station accessories
- Available U.L. and C.S.A. listed

**Removable Roof**

**Enclosure**

- Manufactured with durable fiberglass for flexural strength and excellent fatigue
- Available in a variety of colors or optional brick facade
- Standard with R12 insulation, optional to R20

**Standby Engine For Power Outages**

**Clearly Marked Field Connections For Fast & Efficient Electrical Hook-up**

**Man-door Station Entrance**

**Duplex & Triplex Self-priming Pump Configurations**

- **Super T Series® Pumps**  
**Sizes:** 2" - 10" in duplex pump arrangements up to 150 HP  
**Sizes:** 2" - 8" in triplex pump arrangements up to 100 HP
- **Ultra V Series® Pumps**  
**Sizes:** 3" - 6" in duplex pump arrangements up to 150 HP  
**Sizes:** 3" - 6" in triplex pump arrangements up to 100 HP
- **10 Series® Pumps**  
**Size:** 12" in duplex arrangements up to 150 HP

## Specifications

**Pump Size:** 2" (50 mm), 3" (75 mm), 4" (100 mm), 6" (150 mm), 8" (200 mm), 10" (250 mm), 12" (300 mm)

**Max Capacity:** 5200 GPM (328 lps)

**Max Head:** 320' (98 m)

**Max Solids:** 3" (76 mm)

**Max Temperature:** 160° F (71° C)

**Motor - Voltage:** 200 V 3P, 230 V 1P, 230 V 3P, 460 V 3P

**Motor - Cycles:** 60 Hz

**Horsepower:** 2 HP (2 kW) to 150 (112 kW)



All ReliaSource® lift stations come standard with a five-year warranty.



# ReliaSource® – The Municipal Market's Most Reliable Packaged Stations



A



B

## A Modular Above-Ground Packaged Station

Accommodates: Super T Series®, Ultra V Series®, or 10 Series®  
Pump Size: 2" (50 mm) to 12" (300 mm)  
Max Capacity: 5200 GPM\* (328 lps)  
Max Solids: 3" (76 mm)  
Max Head: 325' (99 m)  
Max Temperature: 160° F (71° C)  
Motor - Voltage: 200V 3P, 230V 1P, 230V 3P, 460V 3P  
Motor - Cycles: 60 Hz  
Horsepower: 2 HP (1 kW) to 150 HP (110 kW)

## B 8x12 Above-Ground Packaged Station

Accommodates: Super T Series®, Ultra V Series®, or VS Series  
Pump Size: 2" (50 mm) to 8" (200 mm)  
Max Capacity: 2660 GPM\* (168 lps)  
Max Solids: 3" (76 mm)  
Max Head: 320' (98 m)  
Max Temperature: 160° F (71° C)  
Motor - Voltage: 200V 3P, 230V 1P, 230V 3P, 460V 3P  
Motor - Cycles: 60 Hz  
Horsepower: 2 HP (1 kW) to 100 HP (74 kW)



DJ Gongol & Associates, Inc.

PO Box 180 | West Des Moines, IA 50061-0180  
4328 North Dawson | Cumming, IA 50061  
515-223-4144 | 515-981-0581 fax  
info@gongol.net



DJ Gongol & Associates, Inc.

PO Box 180 | West Des Moines, IA 50061-0180

4328 North Dawson | Cumming, IA 50061

515-223-4144 | 515-981-0581 fax

info@gongol.net



C



D

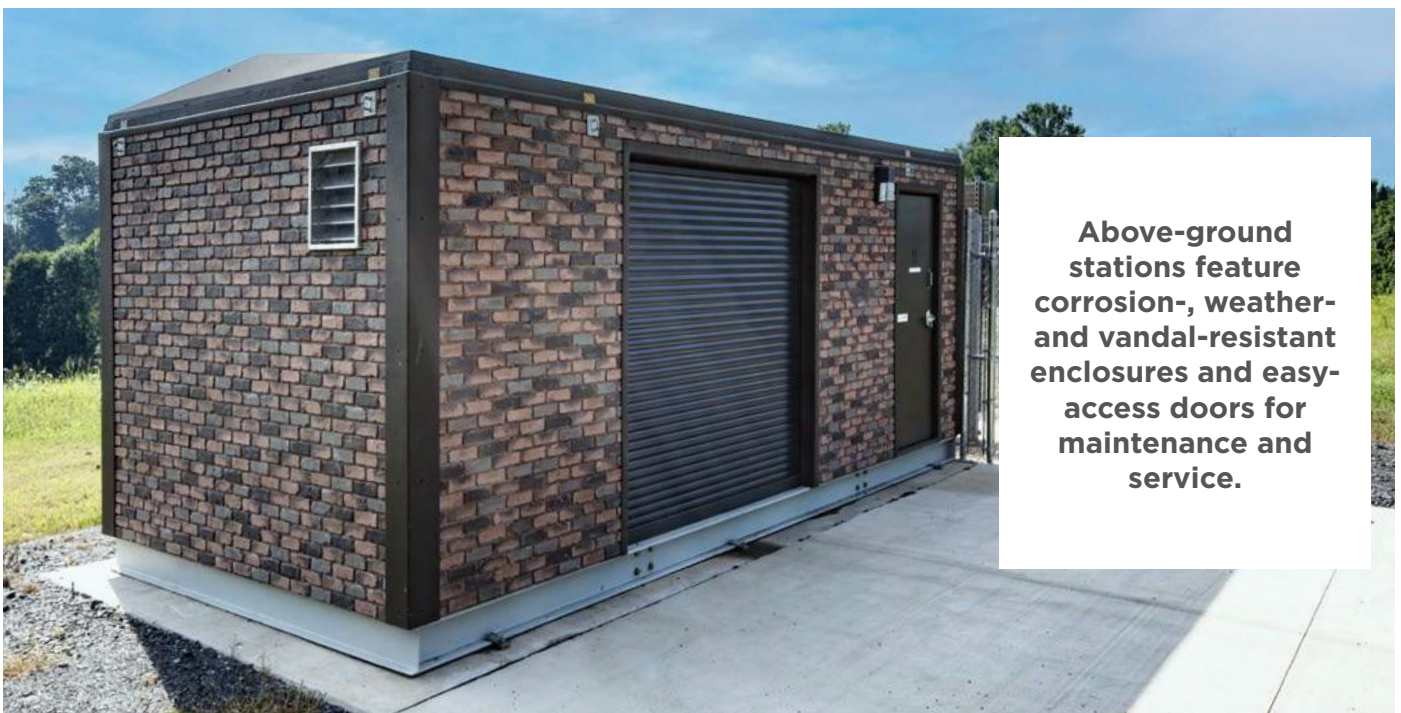
## C 6x6 Above-Ground Packaged Station

Accommodates: **Super T Series®** or **Ultra V Series®**  
Pump Size: **2" (50 mm) to 6" (150 mm)**  
Max Capacity: **1480 GPM\* (94 lps)**  
Max Head: **158' (48 m)**  
Max Solids: **3" (76 mm)**  
Max Temperature: **160° F (71° C)**  
Motor - Voltage: **200V 3P, 230V 1P, 230V 3P, 460V 3P**  
Motor - Cycles: **60 Hz**  
Horsepower: **5 HP (4 kW) to 50 HP (37 kW)**

## D 6x6 Above-Ground Packaged Station

Accommodates: **Super T Series®** or **Ultra V Series®**  
Pump Size: **2" (50 mm) to 6" (150 mm)**  
Max Capacity: **1480 GPM\* (94 lps)**  
Max Head: **158' (48 m)**  
Max Solids: **3" (76 mm)**  
Max Temperature: **160° F (71° C)**  
Motor - Voltage: **200V 3P, 230V 1P, 230V 3P, 460V 3P**  
Motor - Cycles: **60 Hz**  
Horsepower: **2 HP (1 kW) to 25 HP (18 kW)**

*\*Single pump operation*



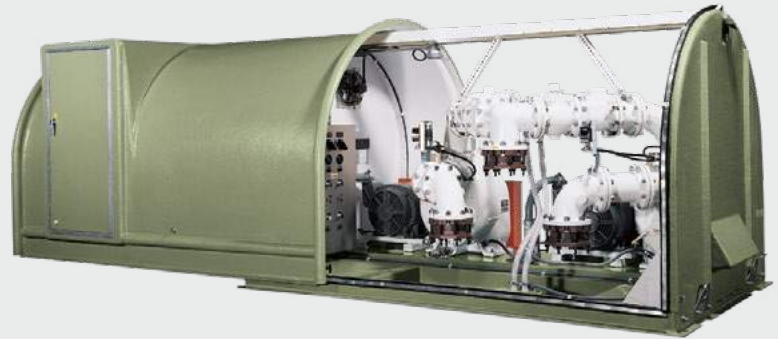
**Above-ground stations feature corrosion-, weather- and vandal-resistant enclosures and easy-access doors for maintenance and service.**



# ReliaSource® – The Municipal Market's Most Reliable Packaged Stations Cont.



E



F

## E Above-Ground Submersible Valve Package (ASVP)

Accommodates: **SF Series®**  
Pump Size: **3" (75 mm) to 6" (150 mm)**  
Max Capacity: **2280 GPM\* (144 lps)**  
Max Head: **172' (52 m)**  
Max Solids: **3" (76 mm)**  
Max Temperature: **104° F (40° C)**  
Motor - Voltage: **208V 3P, 230V 1P, 230V 3P, 460V 3P**  
Motor - Cycles: **60 Hz**  
Horsepower: **3 HP (2 kW) to 50 HP (37 kW)**

## F 7x10 Above-Ground Packaged Station

Accommodates: **Super T Series® or Ultra V Series®**  
Pump Size: **2" (50 mm) to 8" (200 mm)**  
Max Capacity: **2660 GPM\* (168 lps)**  
Max Head: **158' (48 m)**  
Max Solids: **3" (76 mm)**  
Max Temperature: **160° F (71° C)**  
Motor - Voltage: **200V 3P, 230V 1P, 230V 3P, 460V 3P**  
Motor - Cycles: **60 Hz**  
Horsepower: **2 HP (1 kW) to 50 HP (37 kW)**



**DJ Gongol & Associates, Inc.**

PO Box 180 | West Des Moines, IA 50061-0180  
4328 North Dawson | Cumming, IA 50061  
515-223-4144 | 515-981-0581 fax  
info@gongol.net





## DJ Gongol & Associates, Inc.

PO Box 180 | West Des Moines, IA 50061-0180  
4328 North Dawson | Cumming, IA 50061  
515-223-4144 | 515-981-0581 fax  
info@gongol.net



G



H

### G Auto-Start Packaged Station

Accommodates: **Super T Series®**, **Ultra V Series®**,  
or **VS Series**

Pump Size: **2" (50 mm) to 10" (250 mm)**

Max Capacity: **3400 GPM\* (215 lps)**

Max Head: **320' (98 m)**

Max Solids: **3" (76 mm)**

Max Temperature: **160° F (71° C)**

Motor - Voltage: **200V 3P, 230V 3P, 460V 3P**

Motor - Cycles: **60 Hz**

Horsepower: **3 HP (2 kW) to 150 HP (110 kW)**

### H Base-Mounted Packaged Station

Accommodates: **Super T Series®**, **Ultra V Series®**,  
or **VS Series**

Pump Size: **2" (50 mm) to 10" (250 mm)**

Max Capacity: **3400 GPM\* (215 lps)**

Max Head: **320' (98 m)**

Max Solids: **3" (76 mm)**

Max Temperature: **160° F (71° C)**

Motor - Voltage: **200V 3P, 230V 1P, 230V 3P, 460V 3P**

Motor - Cycles: **60 Hz**

Horsepower: **2 HP (1 kW) to 150 HP (110 kW)**

*\*Single pump operation*

## ReliaSource® Stations:

# Performance And Tasteful Exteriors

Gorman-Rupp is committed to meeting your sewage and wastewater handling requirements. And we offer a variety of visually pleasing exterior enclosure solutions.

## Modular Above-Ground Enclosure Options

The ReliaSource® modular above-ground lift station represents the long-lasting performance, quality and convenience of the ReliaSource brand, inside and out. Fully customizable and available in a variety of sizes, the modular lift station offers multiple brick enclosure (in addition to the standard enclosures) options including:



Contempo Baked Clay



Old Chicago Baked Clay



Old Chicago Mocha



Contempo Spiced Brick



Old Chicago Dusky Evening



Old Chicago Spiced Brick



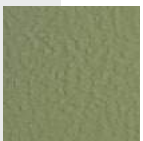
Old Chicago Antique Brick



Old Chicago Merlot Brick

## Standard Enclosure Options

Gorman-Rupp ReliaSource® lift station enclosures are manufactured with durable fiberglass for flexural strength and corrosion, mold, mildew and UV resistance. All enclosure options provide a superior barrier to caustic or acidic atmospheres and offer vandal-resistant security. Enclosures come standard with R12 insulation (optional R20).



Green



White



Premium Beige



Beige



Premium Green



Premium Gray



Gray



**DJ Gongol & Associates, Inc.**

PO Box 180 | West Des Moines, IA 50061-0180

4328 North Dawson | Cumming, IA 50061

515-223-4144 | 515-981-0581 fax

info@gongol.net



# ReliaSource® – Visually Pleasing Exterior Enclosure Solutions



**Abstract Stone  
Wrapped ASVP**



**Red Brick  
Wrapped 6x6**



**Custom  
Wrapped Solutions**

*Consult factory for details.*

## ReliaSource® Vinyl Wrapped Solutions

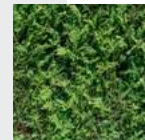
Gorman-Rupp's 6x6, 6x6T and ASVP ReliaSource® lift stations are now available with your choice of standard 3M™ vinyl wraps to help your station blend into the surrounding environment. Each station's wrap is applied directly to the enclosure surface using a pressure-activated adhesive that stands up to the elements. Custom, high resolution artwork can be submitted for unique applications.



Red Brick



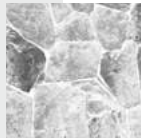
Stone Wall



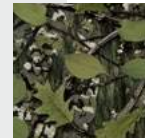
Cypress Shrub



White Brick



Abstract Stone



Forest Camo



Weathered Red Brick



**DJ Gongol & Associates, Inc.**

PO Box 180 | West Des Moines, IA 50061-0180

4328 North Dawson | Cumming, IA 50061

515-223-4144 | 515-981-0581 fax

info@gongol.net

# Lift Stations When You Need Them

When you need a lift station quickly, Gorman-Rupp is ready. ReliaSource<sup>®</sup> Express packages can be built and shipped in four weeks or less. 6x6, 6x6T and standard base-mounted stations are available with a variety of 3", 4" and 6" Super T Series<sup>®</sup> pumps. ASVP stations come equipped with applicable SF Series<sup>®</sup> pumps to suit your pumping needs. You will be able to choose from four station types, six Super T Series<sup>®</sup> pumps, all our applicable submersible models and specify mechanical and electrical components from a provided list. As long as the chosen components are within the programs parameters, the station will be shipped within weeks of the completed order.



1a



2a



3a



4a

## Standard Mechanical Components

- Drain kit\*
- Gauges\*\*
- Automatic air release valves\*
- Station insulation\*\*
- Four hinged doors\*
- 1" air release line\*\*\*
- Pump/HP/voltage:\*\*\*
  - Non-XP pumps
  - Must be 30 HP or lower
  - All SF pump models
  - 10 meter cable

## Custom Mechanical Options

- Variety of discharge sizes\*
- Discharge bypass (no dialer)\*
- Spare parts kit\*
- Spare rotating assembly\*
- Alarm light/horn (ships loose)\*
- Alarm agent\*
- Motor placed above the pump base **(2a)**
- 4" or 6" discharge header size\*\*\*
- Discharge bypass may be 4" or 6"\*\*\*
- 4" suction bypass\*\*\*
- Splice kit\*\*\*
- Thrust clamps\*\*\*
- Automatic air release valve ARV (GRP33-07)\*\*\*
- Compression couplings\*\*\*
- Heater\*\*\*
- Alarm light shipped loose (no horn)\*\*\*
- Hatch net\*\*\*
- Portable hoist/socket\*\*\*
- Alarm agent with only select contacts\*\*\*
- T3A3S-B/WW, T3CSC-B/WW, T4A3S-B/WW, T4CSC-B/WW, T6A3S-B/WW, T6CSC-B/WW and all SF Series<sup>®</sup> submersible models where applicable \*\*

\*Applicable for 1a, 2a and 3a. \*\*Applicable for 1a, 2a, 3a and 4a. \*\*\*Applicable for 4a. Consult the factory for more details.





DJ Gongol & Associates, Inc.

PO Box 180 | West Des Moines, IA 50061-0180

4328 North Dawson | Cumming, IA 50061

515-223-4144 | 515-981-0581 fax

info@gongol.net

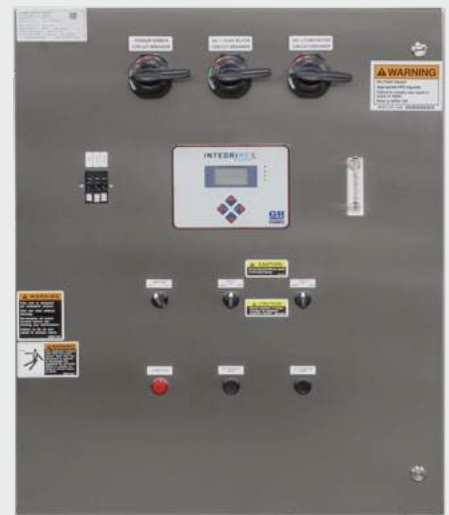
## Standard Electrical Components

- NEMA 1 SST enclosure (mounted)\*\*
- UL listed panel\*\*
- 5KVa transformer\*\*
- Spare 120V 15A breaker\*\*
- Low temperature alarm\*\*
- Panel heater\*\*
- SPD\*\*
- Pump run contacts\*\*
- FVNR starters\*\*

## Custom Electrical Options

- HP/Voltage options\*\*
- Integrinex\*\*
  - I.S. Radar or Air Bubbler
  - Always includes I.S. Backup float
- Relay\*\*
  - I.S. 4 Float control
  - Always includes pump #2 start delay

**Integrinex: solving problems with controls.**



# Precise Matching Of Pumps And Motors With Integrinex® Controls

The Gorman-Rupp team of electrical, mechanical and hydraulic engineers works closely throughout the development of each pumping system to ensure the entire system works in harmony to meet your system requirements - accurately and reliably.

## Integrinex® Liquid Level Controls

### Integrinex® Standard

Integrinex Standard is the heart of every Gorman-Rupp station packed with the features you need most, including duplex and triplex alternation, level sensors, pump delay and alarms.

### Integrinex® Advanced

Advanced control systems include Soft Starters and VFD's (variable frequency drives) to manage electric inrush, hydraulic shock and matching starting and stopping torque required by the pump. Integrinex Advanced controls are custom engineered to match your unique system requirements for the additional control you need. And now, when equipped with new FloSmart® technology, the Integrinex Advanced control system can detect a pump obstruction and run a cleaning cycle until the debris is cleared.

### Integrinex® Remote View

All the functionality of our advanced system with the added convenience of remote tablet-based management and monitoring.

**INTEGRINEX®**  
ADVANCED  
WITH FloSmart  
TECHNOLOGY

Integrinex® Advanced with  
FloSmart® technology  
is available in new  
ReliaSource® stations.



The performance of any pumping system is dependent on the reliability and accuracy of the pump controls. Our expert electrical engineers help you design an efficient system that includes the best, precisely matched controls in the industry.



DJ Gongol & Associates, Inc.

PO Box 180 | West Des Moines, IA 50061-0180  
4328 North Dawson | Cumming, IA 50061  
515-223-4144 | 515-981-0581 fax  
info@gongol.net



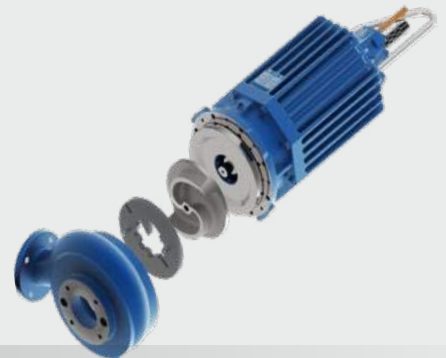
# A New Era In Solids-Handling Technology



**Super T Series® Eradicator®  
& Eradicator Plus™**




**Ultra V Series®  
Eradicator®**




**SF Series®  
Eradicator Plus™**

## Design Features



The Eradicator system features an aggressive self-cleaning wearplate incorporating a number of notches and grooves, as well as a revolutionary tooth, that helps break up stringy materials and pass them through the pump without impacting performance or interrupting service.

## System Benefits




Easier access to the impeller, improved operational efficiency, reduced maintenance costs and lower life-cycle costs are benefits of the Eradicator system. The innovative design of the patented lightweight inspection plate greatly reduces expensive downtime by providing easy access to the impeller. The system can be factory-equipped in new pumps or purchased as a retrofit kit that is interchangeable with Super T Series pumps currently operating in the field.

## Advanced Solids Management


For those extreme-duty applications where trash bags, wipes, hair, industrial by-products and agricultural wastes are present, Gorman-Rupp has introduced the Eradicator Plus™. Based on the same principles of the Eradicator, this new solids reduction technology is ideal when cutting and tearing of debris entering the pump is required.

## Heavy-Duty Impeller



Eradicator Plus pumps are equipped with a rugged, heavy-duty continuous vane impeller constructed of G-R Hard Iron for the most aggressive waste-handling applications. The pump out vanes incorporated into the thick back shroud help prevent the buildup of debris behind the impeller.

## Replaceable Wearplate



The wearplate incorporated into Eradicator Plus pumps is constructed of extra-thick G-R Hard Iron. It utilizes the same notches and grooves as the Eradicator wearplate, but with an oversized lacerating tooth that is designed to cut and shred organic solids before they enter the interior of the pump.



**DJ Gongol & Associates, Inc.**

PO Box 180 | West Des Moines, IA 50061-0180  
4328 North Dawson | Cumming, IA 50061  
515-223-4144 | 515-981-0581 fax  
info@gongol.net

# After Sale Support

Gorman-Rupp products stand the test of time due to our quality manufacturing processes, rigorous product testing and extensive after sale support.

## Product Support

Every pump manufactured by Gorman-Rupp is supported with reference information. Pump operation and maintenance manuals (including parts lists), specification data sheets, performance curves and outline drawings in PDF and CAD formats are available on our website or through your distributor for every pump.

## Warranty

The warranties on Gorman-Rupp products are some of the best in the industry. Gorman-Rupp has you covered with warranties up to 60 months.

## Education & Safety

Gorman-Rupp is committed to remaining at the forefront of the industry with technology and safety. Training videos, demos and

in-person training sessions created for our distributors and end-users help to keep everyone up to date on the latest safety tips and pump maintenance.

## Parts

When you need a replacement part, you'll have it fast. Gorman-Rupp is fully committed to keeping your equipment running long after installation and ensuring your pump or lift station continues to meet your requirements year after year. We sell parts through our network of distributors. Find a distributor in your area for assistance.

## Service

Should your pump or lift station require service, our worldwide network of factory-trained distributors are ready to quickly respond. Our distributors have the expertise to support you and your pump or lift station long after installation.

## Manufacturing Facilities

**Gorman-Rupp USA**  
Mansfield, Ohio, USA

**Gorman-Rupp Canada**  
St. Thomas, Ontario, Canada

**Gorman-Rupp Europe**  
Waardenburg, Netherlands  
Namur, Belgium

**Gorman-Rupp Africa**  
Cape Town, South Africa  
Durban, South Africa  
Johannesburg, South Africa (Headquarters)

## Distribution Center

Grand Prairie, Texas, USA

Engineering and manufacturing superiority has been the hallmark of Gorman-Rupp since our inception in 1933. Today we bring our products to life in some of the most efficient, modern and state-of-the-art manufacturing facilities in the world. Gorman-Rupp has a selection of nearly 3,000 pump models, and our world-class team of distributors has worked closely with thousands of end users around the world. We have the proven expertise and the resources to specify, manufacture, test and service your pump, and to ensure reliable performance for the long haul.



**DJ Gongol & Associates, Inc.**

PO Box 180 | West Des Moines, IA 50061-0180  
4328 North Dawson | Cumming, IA 50061  
515-223-4144 | 515-981-0581 fax  
info@gongol.net

**GRPUMPS.COM**

GORMAN-RUPP PUMPS  
P.O. BOX 1217  
MANSFIELD, OHIO 44901-1217 | USA  
TEL: 419.755.1011 | FAX: 419.755.1251



*The Pump People®*