

One Thousand Linotype Public Domain Fonts

Compiled by Ulrich Stiehl, Heidelberg 2008

Fonts are not copyrightable as "computer programs" ("font software") for the following two simple reasons: Firstly, fonts are no computer programs. Secondly, font designers are no computer programmers.

However, many font buyers are dimwitted, and therefore font sellers make these dimwitted font buyers believe that fonts are "font software" or "computer programs" and make these dimwitted font buyers believe, for instance, that a judge, e.g. Chief Justice of the United States John G. Roberts, if he draws the letter "O" with a drawing program, is at this very moment a "computer programmer" writing a "computer program" (see below page 2). Of course, only dimwitted font buyers believe such nonsense, while intelligent persons know that fonts are no computer programs and font designers are no computer programmers.

For legal details see <http://www.sanskritweb.net/forgers/computerprogramm.pdf> (in German language only)

Since fonts are no computer programs, they cannot be protected as computer programs by copyright law. Therefore only the design of fonts may be protected, provided the respective country provides protection of font designs. This is the case for Germany, where font designs, provided such designs are new and original, may be protected for a **maximum period of 25 years** by registration at the German patent office in Munich. Since the maximum 25-year-registration period is calculated starting at the end of the year of registration, this means for the present year 2008 that fonts published in 1982 or earlier are now in 2008 in public domain (Calculation: End of year 1982 + 1 day = 1st January 1983 + 25 years = 1st January 2008).

For instance, in May 1982, the German Mergenthaler Linotype GmbH in Eschborn near Frankfurt published a font catalog including well over 1000 Latin fonts divided into 304 Latin font families. (This font catalog also contained non-Latin fonts which we may ignore here for our design registration period calculations.)

According to above calculation, **all fonts** contained in this 1982 Linotype font catalog have fallen into public domain at least since 1st January 2008. In fact, however, many fonts contained in this Linotype catalog have been in public domain already much earlier for the following reasons: a) Many fonts contained in the 1982 catalog are much older, i.e. they had been designed many years before the year of 1982, b) The design of many Linotype fonts could not be registered due to lack of newness and originality, c) Many fonts had not been registered at all or had only been registered for a much shorter period, e.g. for 5 or 10 years.

The fact that many fonts contained in the 1982 Linotype catalog had been licensed by other foundries can be ignored here, since also all non-Linotype fonts listed in the 1982 catalog are now in public domain.

So, for practical purposes, we may say that all more than 1000 fonts contained in the 1982 Linotype catalog published in 1982 under the title "**Type Faces – Schriften – Caractères**" are in public domain now in 2008. For the complete list of these PD fonts see below pages 3 and 4.

For example, the Linotype catalog of January 1984 contains 1400 fonts, so that 400 additional Linotype fonts will fall into public domain in the year of 2010. And e.g. the Linotype catalog of 1989 contains 2000 fonts with the consequence that 1000 additional Linotype fonts will be in public domain in the year of 2015.

In the United States, the period of protection is **only 14 years** ("*Patents for designs shall be granted for the term of fourteen years from the date of grant*", 35 U.S.C. 173 Term of design patent). This means that e.g. most fonts contained in the "Linodobe" font collection (see <http://www.sanskritweb.net/forgers/linodobe.pdf>) have already fallen into public domain, as far as the USA is concerned.

Ulrich Stiehl, July 2008

Is the US Chief Justice John G. Roberts a Computer Programmer?

Let us assume the following imaginary test situation:

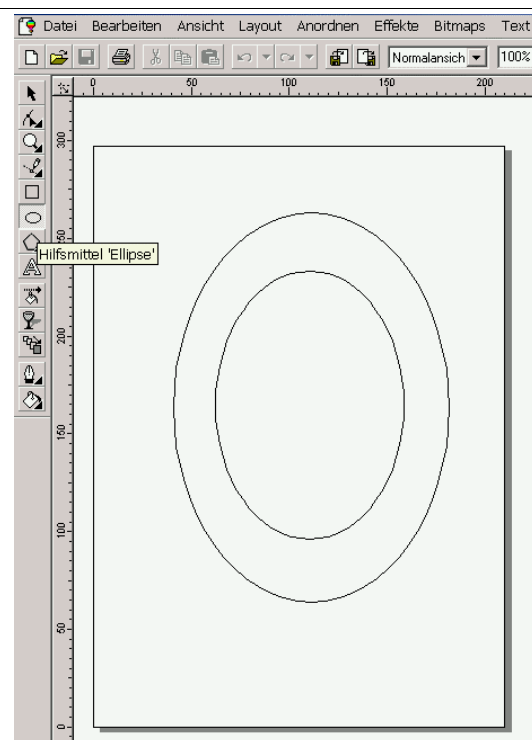
John G. Roberts, Chief Justice of the United States, is sitting in front of a computer equipped with the drawing program called "Coreldraw".

Then, as a first step, John G. Roberts draws with his mouse two egg-like circles as an "O" letter, such as shown here:

Question One:

Is John G. Roberts, Chief Justice of the United States, at this very moment a "computer programmer", who has just written a Coreldraw "computer program" called "O"-letter?

Yes or No?

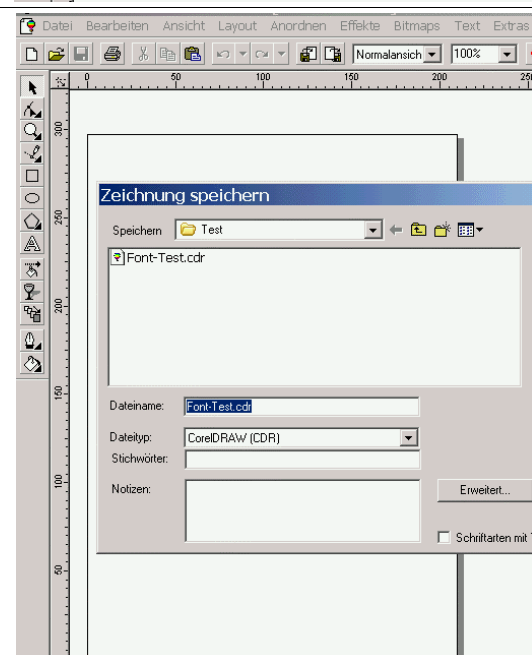


Then, as a second step, John G. Roberts, Chief Justice of the United States, saves this "O" letter as a CDR Coreldraw file, by clicking on the "Save" button, such as shown here:

Question Two:

Is John G. Roberts, Chief Justice of the United States, at this very moment a "computer programmer", who has just written a Coreldraw "computer program" called "O"-letter?

Yes or No?

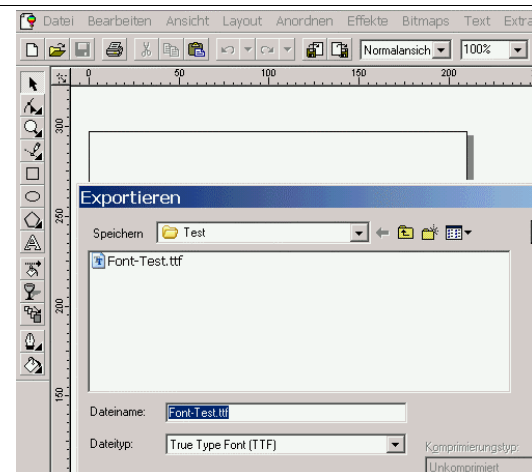


Then, as a third step, John G. Roberts, Chief Justice of the United States, saves this "O" letter as a TTF TrueType file, by clicking on the "Export" button, such as shown here:

Question Three:

Is John G. Roberts, Chief Justice of the United States, at this very moment a "computer programmer", who has just written a TrueType "computer program" called "O"-letter?

Yes or No?



List of 1000 Linotype Public Domain Fonts

Aachen	Caledonia (Cornelia)	Erbar
Ad Lib	Calligraphia	Eurostile
Adsans	Candida	Excelsior
Akzidenz-Grotesk	Cartier	Excelsior Insertio
Aldus	Cascade Script	Fairfield
Alternate Gothic No. 1	Caslon Antique	Fantail
Amelia	Caslon Old Face 2	Fat Face
American Typewriter	Caslon 3	Fehrle
Americana	Caslon 540	Fenice
Antique No. 3	Caslon Open Face	Fette Fraktur
Antique Solid	Century	Florentie
Arnold Boecklin	Century Expanded	Flyer
A & S Gallatin	Century Old Style	Folio
Aster	Century Schoolbook	Forbes
Athenaeum	Charleston	Forte
Auriga	Cheltenham	Fournier
Auriol	Cheltenham Nova	Franklin Gothic
Aurora	Churchward 70	French Roman Light
Avant Garde Gothic	City	Friz Quadrata
Bank gothic	Clarendon	Frutiger
Barcelona	Clarinda Typewriter	Futura
Basilia Haas	Clearface	Futura Black
Baskerville	Clearface Gothic	Galliard
Baskerville No. 2	Cloister	Gando Ronde Script
Fry's Baskerville	Cloister Black	Garamond (Original)
New Baskerville	Cochin	Garamond 3
Bauhaus	Commerzial Grotesk	Garamond (ITC)
Becket	Concorde	Garamond (Simoncini)
Bell Centennial	Cooper Black	Garamond Classico
Bell Gothic	Copperplate Gothic 29	Gazette
Bembo	Copperplate Gothic 30	Gill Sans
Benguiat	Copperplate Gothic 31	Gill Sans Kayo
Benguiat Gothic	Copperplate Gothic 32	Glypha
Bernhard	Copperplate Gothic 33	Gorilla
Bernhard Modern	Corona	Gothic 13
Biltmore	Coronet	Gothic 16
Binny Old Style	Craw Modern	Goudy
Bison	Cushing	Goudy Old Style
Blippo	Della Robia	Granjon
Bloc	De Vinne	Grizzly
Block	Didi	Grotesque 126
Block Gothic	DIN Neuzeit Grotesk	Grotesque 215
Bodoni	Diotima	Grotesque 216
Bauer Bodoni	Diskus	Grouch
Poster Bodoni	Dom Casual	Haas Unica
Bolt Bold	Dominante	Hanseatic
Bookman	Doric	Harry Thin/Fat
Bramley	Eckmann	Headline
Breughel	Egyptian 505	Heldustry
Brighton	Egyptienne	Helvetica
Britannic	Egyptienne F	Helvetica Inserat
Broadway	Ehrhardt	Helvetica Textbook
Brush	Electra	Hobo
Bulmer	Engravers Bold Face	Horley Old Style
Busorama	Eras	IC-Alphabet

Icone	Neuland	Sabon
Impressum	Neuzeit S	Sallwey Script
Imprint	News Gothic	Schneidler
Information	Newtext	Scotch 2
Ionic 5	Nicolas Cochin	Seagull
Iridum	Noris Script	Serif Gothic
Isbell	Normande	Serifa
Italia	Novarese	Serlio
Janson	Nuptial Script	Shelley Allegro Script
Joanna	OCR B	Shelley Andante Script
Kabel	Old English Text	Shelley Volante Script
Karnak	Old Style 7	Souvenir
Kaufmann	Olympian	Spartan
Kennerley	Ondine	Stop
Kismet	Optima	Stratford
Koch Antiqua	Orioa	Stymie
Kompakt	Pabst	Syntax
Korinna	Palatino	Tango
Künstler-Schreibschrift	Parisian	Tempo heavy condensed
Lafayette	Park Avenue Script	Textype
Las Vegas	Parson	Tiemann
Lateinisches Ausgangsschrift	Peignot	Tiffany
Latin No. 2	Perpetua	Times
Leamington	Pierrot	Times English N
Life	Pilgrim	Times Europa
Lightline Gothic	Placard	Modern Times
Linascript	Plak	Torino
Linotext	Plantin	Trade Gothic
Linotype Typewriter	Playbill	Trajanus
Lubalin Graph	Plow & Watters	Trooper
Luthersche Fraktur	Present	Trump Mediaeval
Macbeth	Prestige Elite	Univers
Machine	Primer	University
Madison	Print Out	VAG Rundschrift
Maximus	Promotor	Vendôme
Medici Script	Quorum	Venture Script
Melior	Raleigh	Video
Memphis	Renault Hausschrift	Walbaum
Meridien	Reporter 2	Walbaum (Linotype)
Metroblack 2	Rockwell	Weiß
Metrolite 2	Romana	WiesbadenSwing
Metromedium 2	Romic	Wilhelm Klingspor-Gotisch
Mikado Black	Ronda	Windsor
Mistral	Rotation	Worcester
Modern	Rundfunk-Antiqua	Zapf Book
Monticello	Rundfunk-Grotesk	Zapf Chancery
Mr. Big	Russell Square	Zapf International

The above list contains 304 font families only. However, font families usually contain several fonts with the consequence that the above list comprises a total of 1000 fonts.

For instance, the font family "Horley" comprises 8 fonts, as shown on the sample scan on the following page.

<http://www.sanskritweb.net>

02133 Horley™ Old Style light/leicht/maigre 12

abcdefghijklmnopqrstuvwxy
ABCDEFGHIJKLMN**OP**QRSTUVWXYZ
1234567890 .,:;"'»«&!?
Håmbûrgefönstiv

11133 Horley™ Old Style light italic/kursiv leicht/italique maigre 12

abcdefghijklmnopqrstuvwxy
*ABCDEFGHIJKLMN**OP**QRSTUVWXYZ*
1234567890 .,:;"'»«&!?
Håmbûrgefönstiv

05133 Horley™ Old Style roman/normal/romain 12

abcdefghijklmnopqrstuvwxy
ABCDEFGHIJKLMN**OP**QRSTUVWXYZ
1234567890 .,:;"'»«&!?
Håmbûrgefönstiv

13133 Horley™ Old Style italic/kursiv/italique 12

abcdefghijklmnopqrstuvwxy
*ABCDEFGHIJKLMN**OP**QRSTUVWXYZ*
1234567890 .,:;"'»«&!?
Håmbûrgefönstiv

06133 Horley™ Old Style semi-bold/kräftig/quart-gras 12

abcdefghijklmnopqrstuvwxy
ABCDEFGHIJKLMNOP**QRSTUVWXYZ**
1234567890 .,:;"'»«&!?
Håmbûrgefönstiv

33133 Horley™ Old Style semi-bold italic/kursiv kräftig/italique quart-gras 12

abcdefghijklmnopqrstuvwxy
ABCDEFGHIJKLMN**OP**QRSTUVWXYZ
1234567890 .,:;"'»«&!?
Håmbûrgefönstiv

07133 Horley™ Old Style bold/half fett/demi-gras 12

abcdefghijklmnopqrstuvwxy
ABCDEFGHIJKLMNOP**QRSTUVWXYZ**
1234567890 .,:;"'»«&!?
Håmbûrgefönstiv

14133 Horley™ Old Style bold italic/kursiv half fett/italique demi-gras 12

abcdefghijklmnopqrstuvwxy
ABCDEFGHIJKLMN**OP**QRSTUVWXYZ
1234567890 .,:;"'»«&!?
Håmbûrgefönstiv