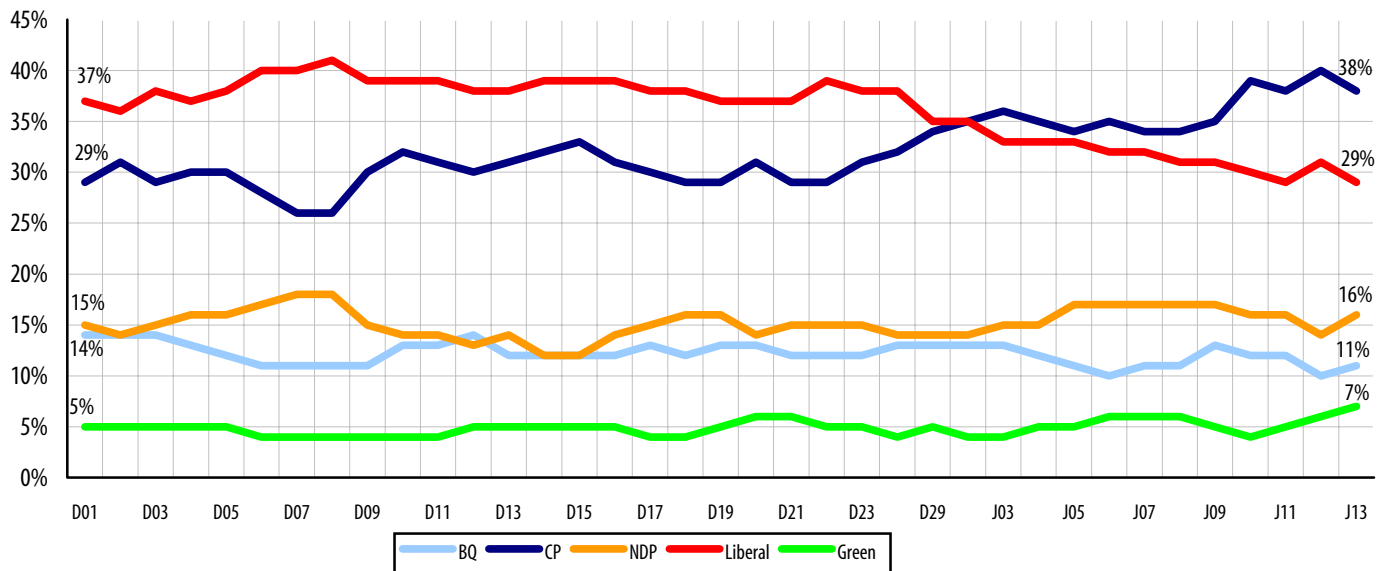


The Conservative Nine Point Lead Continues



FIRST RANKED BALLOT (N=1,200 Canadians, 1,032 decided voters)



REGIONAL BALLOTS

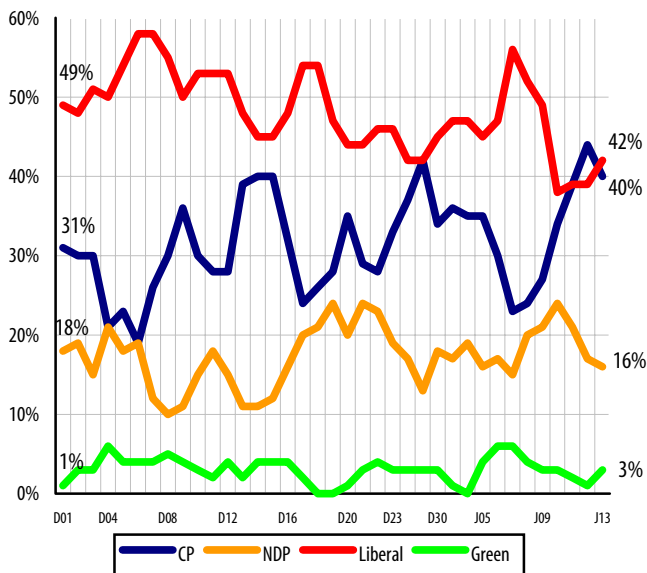
	Canada		Atlantic Canada		Quebec		Ontario		Western Canada	
	Jan 12	Jan 13	Jan 12	Jan 13	Jan 12	Jan 13	Jan 12	Jan 13	Jan 12	Jan 13
	%	%	%	%	%	%	%	%	%	%
Conservative	40	38	44	40	28	24	39	38	46	45
Liberal	31	29	39	42	19	17	35	33	32	31
NDP	14	16	17	16	5	6	19	21	15	16
BQ	10	11	-	-	45	48	-	-	-	-
Green	6	7	1	3	4	4	6	7	7	8
Accuracy	± 3.1%	± 3.1%	± 9.9%	± 9.9%	± 6.6%	± 6.5%	± 5.6%	± 5.6%	± 5.1%	± 5.2%
Undecided	14	14	13	14	22	21	11	11	11	12

Media inquiries should be directed to: Nikita James Nanos at nnanos@sesresearch.com or (613) 234-4666 x237. Visit the SES website to sign up for instant email updates. For a detailed explanation on the methodology, please refer to page 5 of this release.

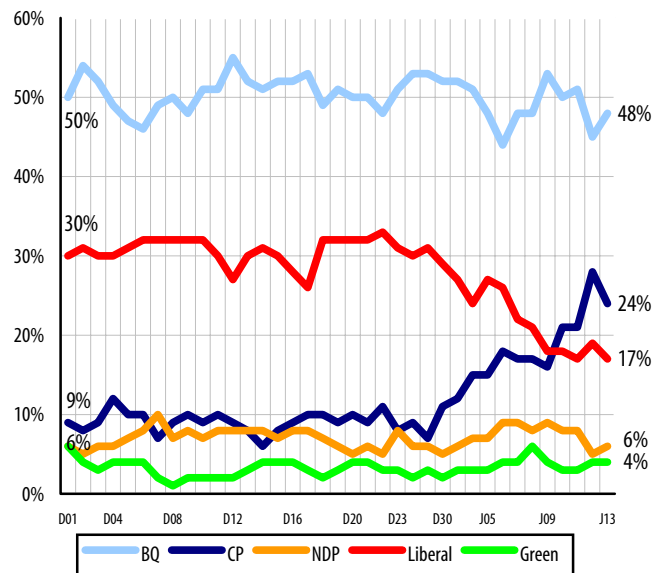
NDP Regains Ground in Ontario



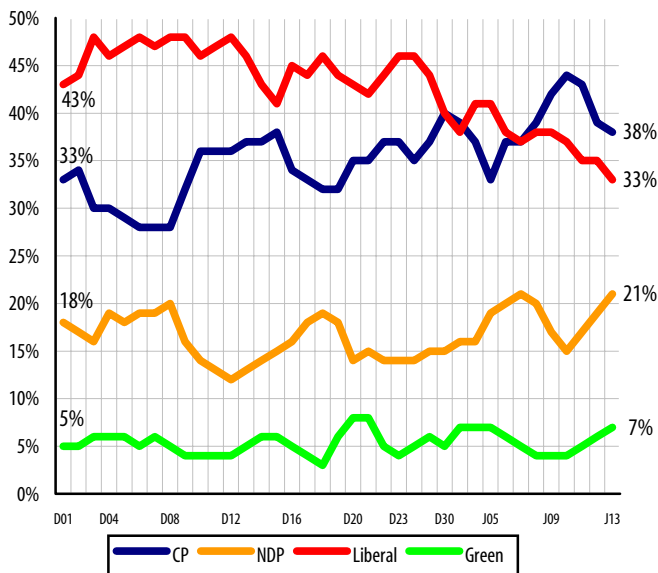
ATLANTIC CANADA (Decided Voters, Accuracy ± 10)



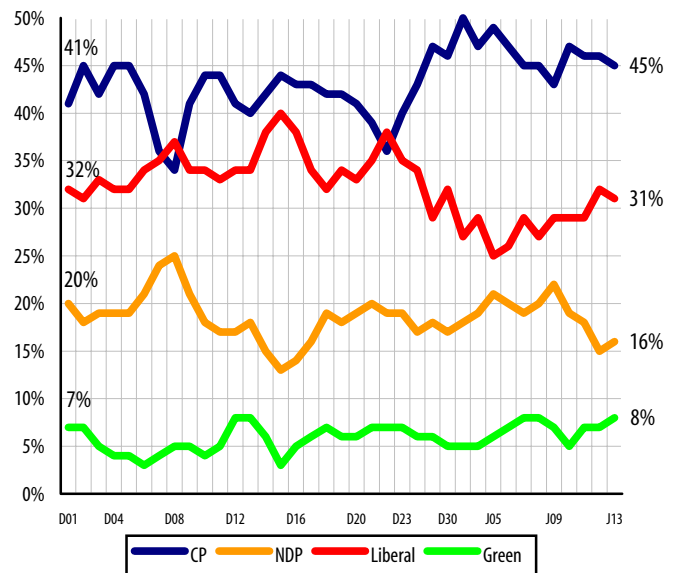
QUEBEC (Decided Voters, Accuracy ± 6)



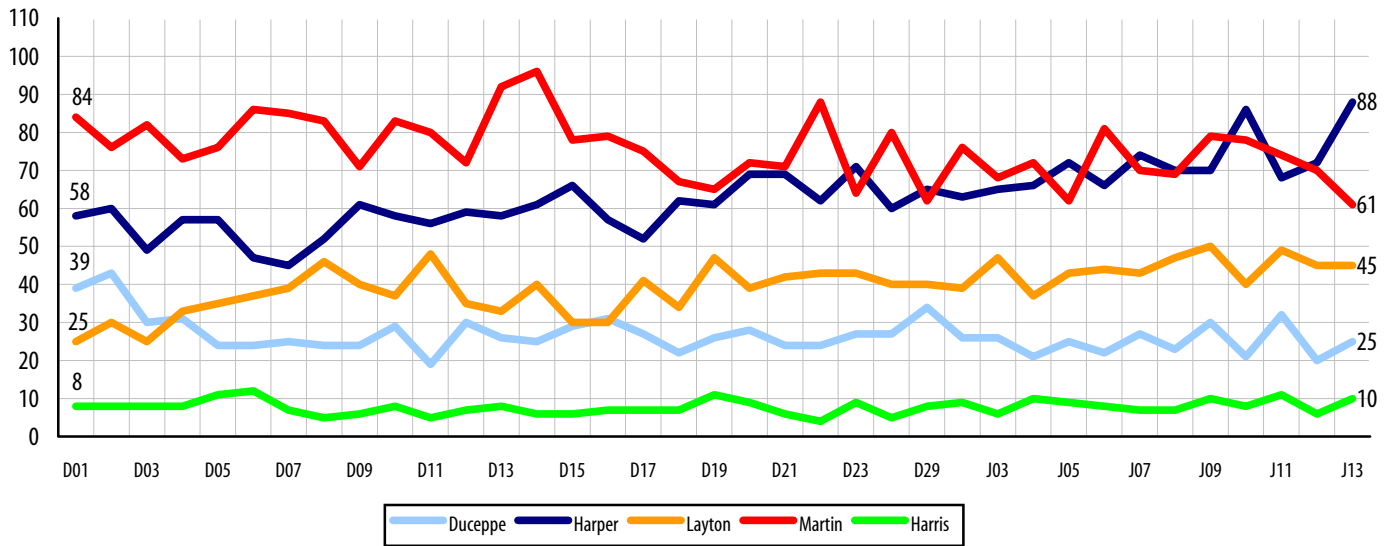
ONTARIO (Decided Voters, Accuracy ± 6)



WESTERN CANADA (Decided Voters, Accuracy ± 5)



Performance Index: Harper Scores on all Measures



LEADERSHIP INDICATORS

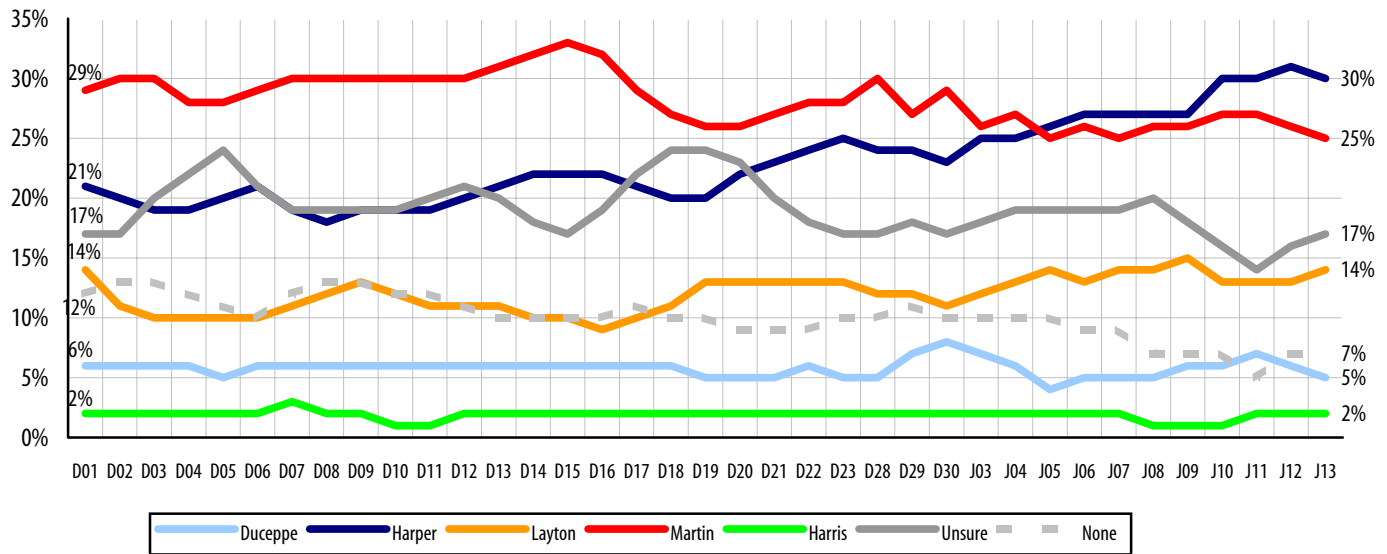
	Trust		Competence		Vision for Canada		Leadership Index Score	
	Jan 12	Jan 13	Jan 12	Jan 13	Jan 12	Jan 13	Jan 12	Jan 13
	%	%	%	%	%	%		
Paul Martin	16	16	26	23	28	22	70	61
Stephen Harper	23	28	24	28	25	32	72	88
Gilles Duceppe	9	11	8	11	3	3	20	25
Jack Layton	17	18	13	12	15	15	45	45
Jim Harris	2	3	2	3	2	4	6	10
None of them	21	14	8	9	8	10	37	33
Undecided	13	10	20	14	20	15	53	39
Accuracy	± 5.0%	± 5.0%	± 5.0%	± 5.0%	± 5.0%	± 5.0%		

Media inquiries should be directed to: Nikita James Nanos at nnanos@sesresearch.com or (613) 234-4666. Visit the SES website to sign up for instant email updates. For a detailed explanation on the methodology, please refer to page 5 of this release.

Best PM: Harper Ahead of Martin by Five Points



BEST PRIME MINISTER (N=1,200 Canadians)



REGIONAL NUMBERS

	Canada		Atlantic Canada		Quebec		Ontario		Western Canada	
	Jan 12	Jan 13	Jan 12	Jan 13	Jan 12	Jan 13	Jan 12	Jan 13	Jan 12	Jan 13
	%	%	%	%	%	%	%	%	%	%
Harper	31	30	24	20	26	28	26	27	40	37
Martin	26	25	33	29	18	16	33	31	24	25
Duceppe	6	5	3	2	18	16	1	1	2	2
Layton	13	14	11	14	7	9	18	19	13	13
Harris	2	2	2	3	1	1	3	3	3	2
None	7	7	5	5	11	12	6	6	4	6
Undecided	16	17	24	27	20	18	13	14	14	15
Accuracy	± 2.9%	± 2.9%	± 9.2%	± 9.2%	± 5.8%	± 5.8%	± 5.3%	± 5.3%	± 4.9%	± 4.9%

Media inquiries should be directed to: Nikita James Nanos at nnanos@sesresearch.com or (613) 234-4666 x237. Visit the SES website to sign up for instant email updates. For a detailed explanation on the methodology, please refer to page 5 of this release.

METHODOLOGY



CPAC Questions

1. If a FEDERAL election were held today, could you please rank your top two current local voting preferences? (First ranked reported)
2. Are you currently leaning towards any particular FEDERAL party, and if you are, which party would that be?

Currently (rotate), Paul Martin is the leader of the federal Liberal Party, Stephen Harper is the leader of the Conservative Party of Canada, Jack Layton is the leader of the federal NDP, Gilles Duceppe is leader of the Bloc Quebecois and Jim Harris is leader of the federal Green Party.

3. Which of the federal leaders would you best describe as the most trustworthy leader?
4. Which of the federal leaders would you best describe as the most competent leader?
5. Which of the federal leaders would you best describe as the leader with the best vision for Canada?
6. Based on what you know about the federal party leaders and their performance during the election campaign up until today, who do you think would make the best Prime Minister?

Methodology

A national random telephone survey is conducted nightly by SES Research throughout the campaign. Each evening a new group of 400 eligible voters are interviewed. The daily tracking figures are based on a three-day rolling sample comprised of 1,200 interviews. To update the tracking a new day of interviewing is added and the oldest day dropped. The margin of accuracy is $\pm 2.9\%$, 19 times out of 20.

The respondent sample is stratified geographically and by gender. The data may be weighted by age according to data from the 2001 Canadian Census administered by Statistics Canada. Percentages reported may not add up to 100 due to rounding. The research has been registered with the Marketing Research and Intelligence Association of which SES is a member.

Leadership Index Score Methodology

Every day, SES will report on a daily leadership index score. The leadership index score is a summation of the three leadership indicators (trustworthy, competence, vision). For example, on November 30th (N30), Jim Harris received a Leadership Index Score of 5 because 2% of Canadians identified Jim Harris as the most trustworthy leader, 1% said he was the most competent and 2% said he had the best vision for Canada.

The Leadership Index Score will be tracked daily with updated results from the previous night of polling. Unlike the other measures tracked by SES, the leadership index score will not be based on a three-day rolling sample. It will be reported from results the evening before. This will allow SES to measure the performance of the federal party leaders and the key factors driving performance on a daily basis.

About SES

Established in 1987, SES Research is a full service public opinion research and management consulting firm. For more information on our full range of services please visit our website www.sesresearch.com.

Media inquiries should be directed to:

Nikita James Nanos

President and CEO

SES Research

nnanos@sesresearch.com

(613) 234-4666 ext. 237