



# Lammas and Mabon





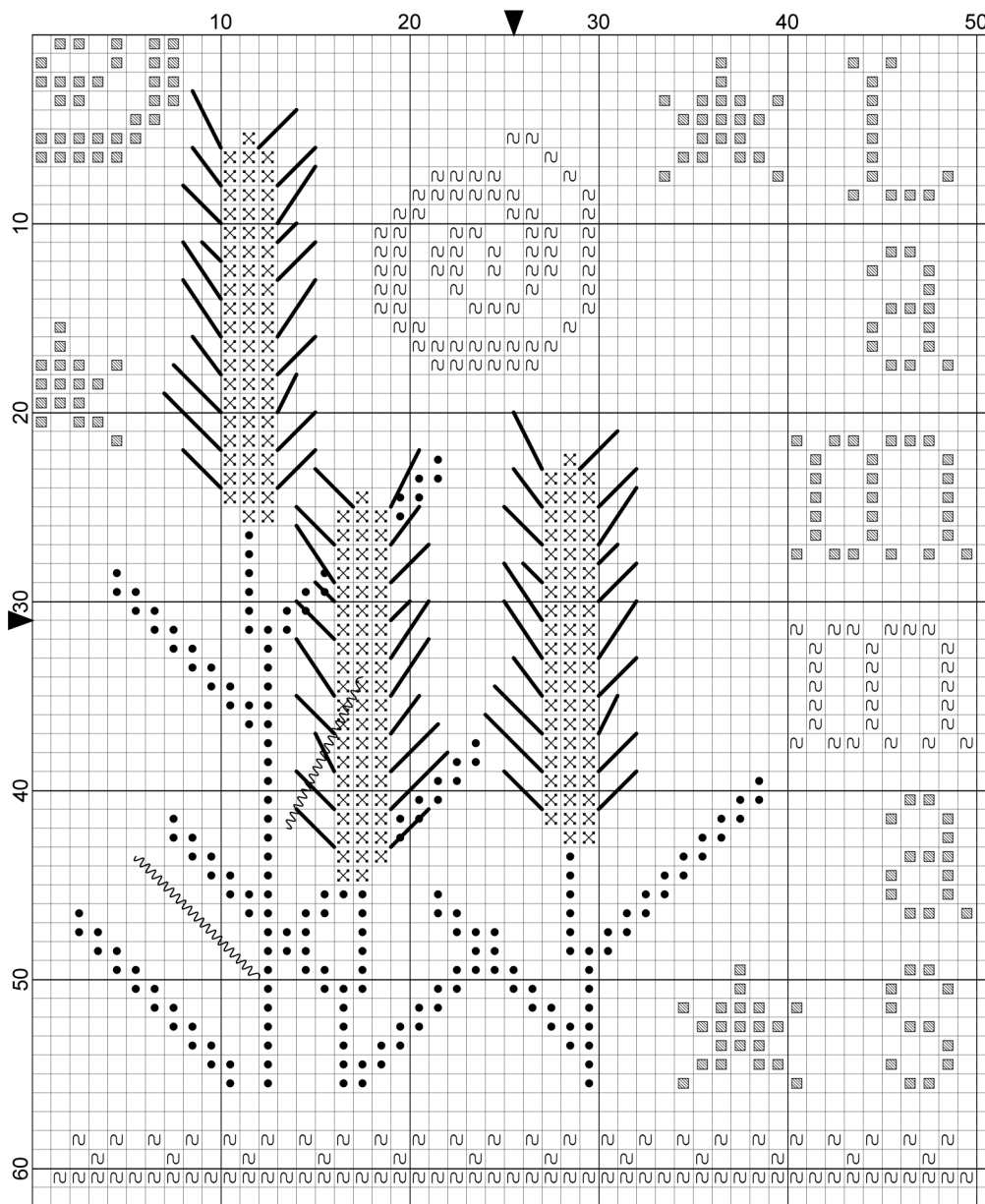
**Author:** Isabella Abbiati  
**Copyright:** The Primitive Hare  
**Website:** www.theprimitivehare.com  
**Fabric:** 30 ct Old Salem Linen by The Primitive Hare  
**Grid Size:** 51W x 62H  
**Design Area:** 9,07 cm x 11,07 cm (50 x 61 stitches)

**Legend:**

- DMC 310 black
- DMC 938 coffee brown - ul dk
- ⊗ DMC 783 topaz - md
- ∩ DMC 918 red copper - dk

**Backstitch Lines:**

— DMC-938 coffee brown - ul dk



**OLD SALEM LINEN:**

To stitch this pattern, I used my special hadyed linen:  
 Old Salem is a precious 30 count linen, you can order  
 it right now e-mailing me.  
 Thanks so much!  
 order@theprimitivehare.com

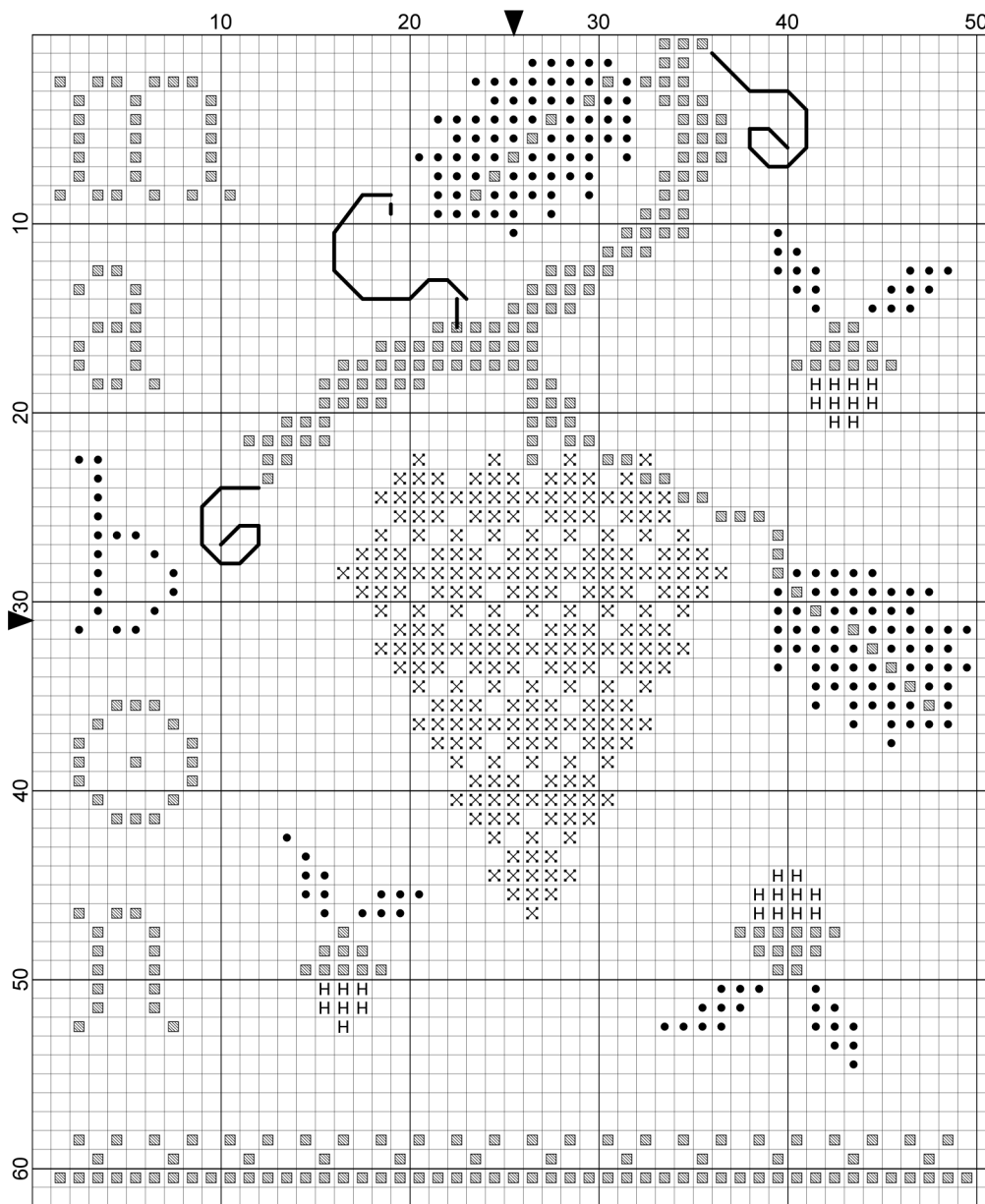
PLEASE RESPECT MY WORK AND DO NOT SHARE THIS PATTERN



**Author:** Isabella Abbiati  
**Copyright:** The Primitive Hare  
**Website:** www.theprimitivehare.com  
**Fabric:** 30 ct Old Salem Linen by The Primitive Hare  
**Grid Size:** 51W x 62H  
**Design Area:** 8,89 cm x 11,07 cm (49 x 61 stitches)

**Legend:**  
 ● DMC 3022 Moss by Nina's Threads    ⊗ DMC 3740 antique violet - dk  
 ◻ DMC 898 coffee brown - vy dk        H DMC 780 topaz - ul vy dk

**Backstitch Lines:**  
 — DMC-898 coffee brown - vy dk



The Primitive Hare

**OLD SALEM LINEN:**

To stitch this pattern, I used my special hadyed linen:  
 Old Salem is a precious 30 count linen, you can order  
 it right now e-mailing me.  
 Thanks so much!  
 order@theprimitivehare.com

PLEASE RESPECT MY WORK AND DO NOT SHARE THIS PATTERN